

REFERENCE PLAN OF EASEMENT
WITHIN LOTS 1 TO 3, DISTRICT
LOT 754, CARIBOO DISTRICT,
PLAN BCP 194600

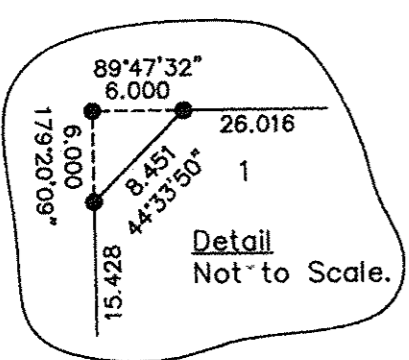
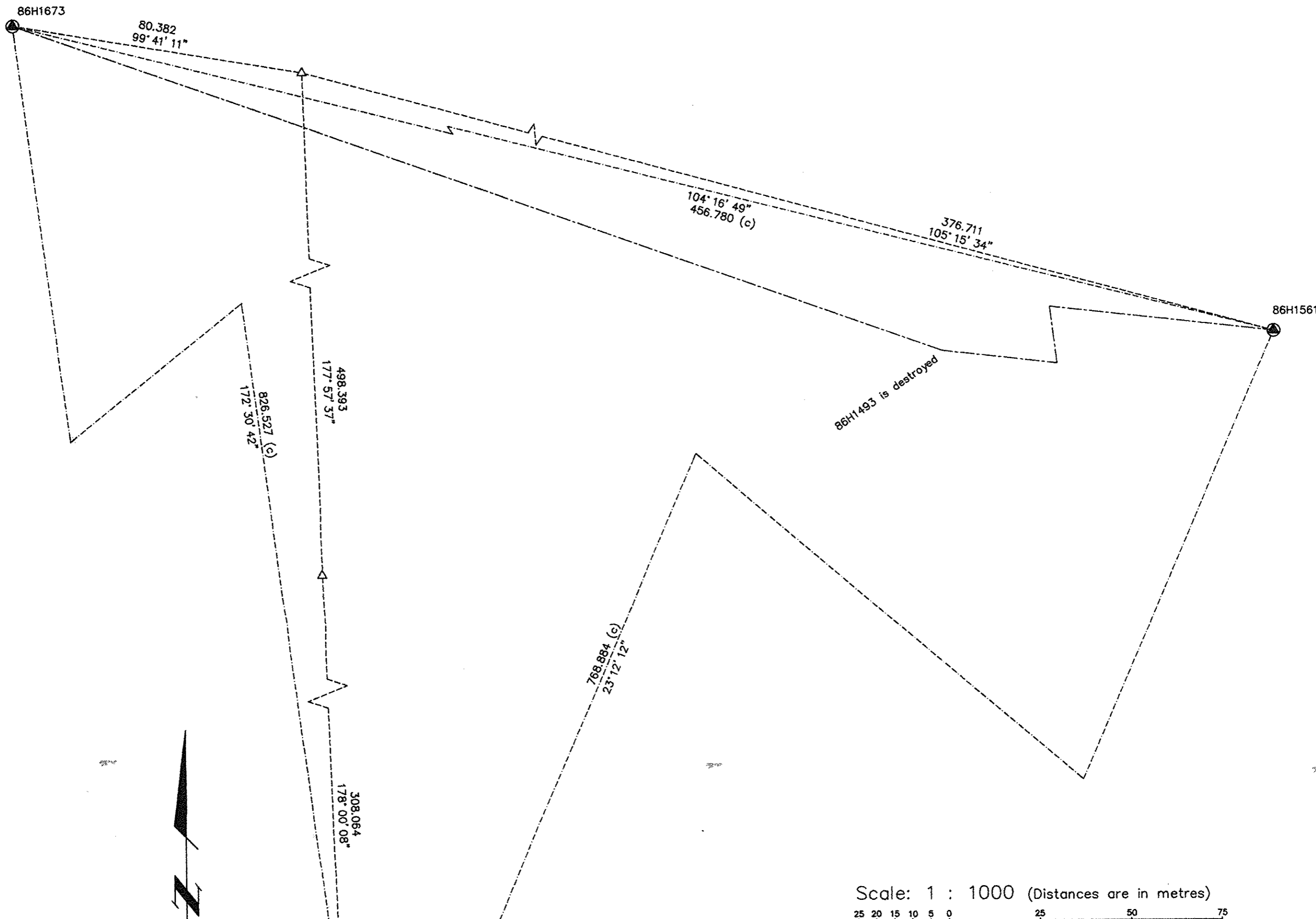
Pursuant to Section 99 of
the Land Title Act.
B.C.G.S. 93G.087

PLAN NO. BCP 19861

Deposited in the Land Title Office at New
Westminster this 22 day of Sept 2005

REGISTRAR
REF. BX 196009

- LEGEND**
- Standard Iron Post Found
 - Standard Iron Post Placed
 - ⊙ Control Monument Found
 - △ Traverse Hub Placed



Scale: 1 : 1000 (Distances are in metres)

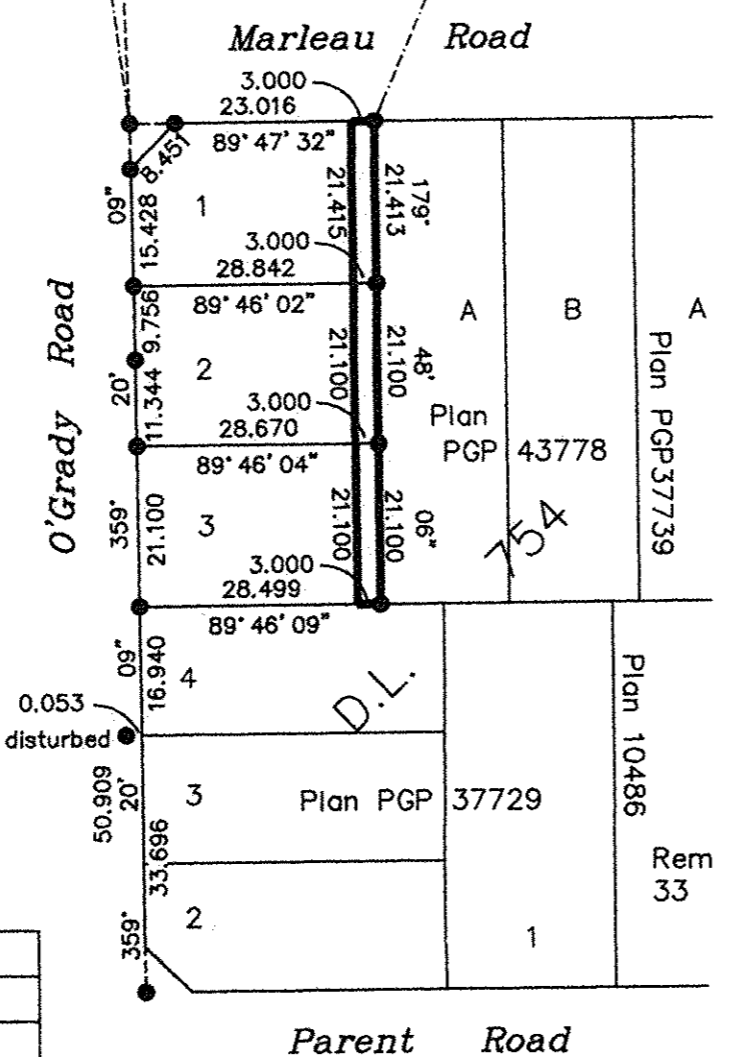
Grid bearings are derived from observations between control monuments 86H1673 and 86H1561, integrated survey area number 39, City of Prince George, B.C. NAD83(CSRS)

Note: This plan shows ground level measured distances. Prior to computation of U.T.M. co-ordinates multiply by the combined factor 0.9995035

I, Gordon Kilbride, a British Columbia Land Surveyor, of Prince George, in British Columbia, certify that I was present at and personally superintended the survey represented by this plan, and that the survey and plan are correct. The field survey was completed on the 29 day of June, 2005. The plan was completed and checked, and the checklist filed under #34451, on the 18 day of July, 2005.

Gordon Kilbride
Gordon Kilbride, B.C.L.S.

BOOK OF REFERENCE	
DESCRIPTION	AREA
Lot 1, Plan BCP 194600	64 m ²
Lot 2, Plan BCP 194600	63 m ²
Lot 3, Plan BCP 194600	63 m ²



This plan lies within the Fraser-Fort George Regional District.

KILBRIDE LAND SURVEYING LTD.
British Columbia Land Surveyors
Prince George, B.C.
Ph: (250) 562-1196 Fax: 562-3656

F.B.- WZ68	D.L.- 754	File No. - 050182E
------------	-----------	--------------------