

Deposited in the Land Title Office at New Westminster this 22 day of SEPT. 2005.

REGISTRAR

REF. # BX 196013

REFERENCE PLAN FOR CONSOLIDATION OF PARCEL 1, PLAN 32582 AND ASSIGNED LOT B (54163M) OF BLOCK 73, PLAN 1268, DISTRICT LOT 343, CARIBOO DISTRICT.

Pursuant to Section 100 of the Land Title Act.

B.C.G.S. 93G.097

Scale: 1 : 500 (Distances are in metres)



Grid bearings are derived from observations between control monuments 85H1054 and 85H1261, integrated survey area number 39, City of Prince George, B.C. NAD83(CSRS)

Note: This plan shows ground level measured distances. Prior to computation of U.T.M. co-ordinates multiply by the combined factor 0.9995128

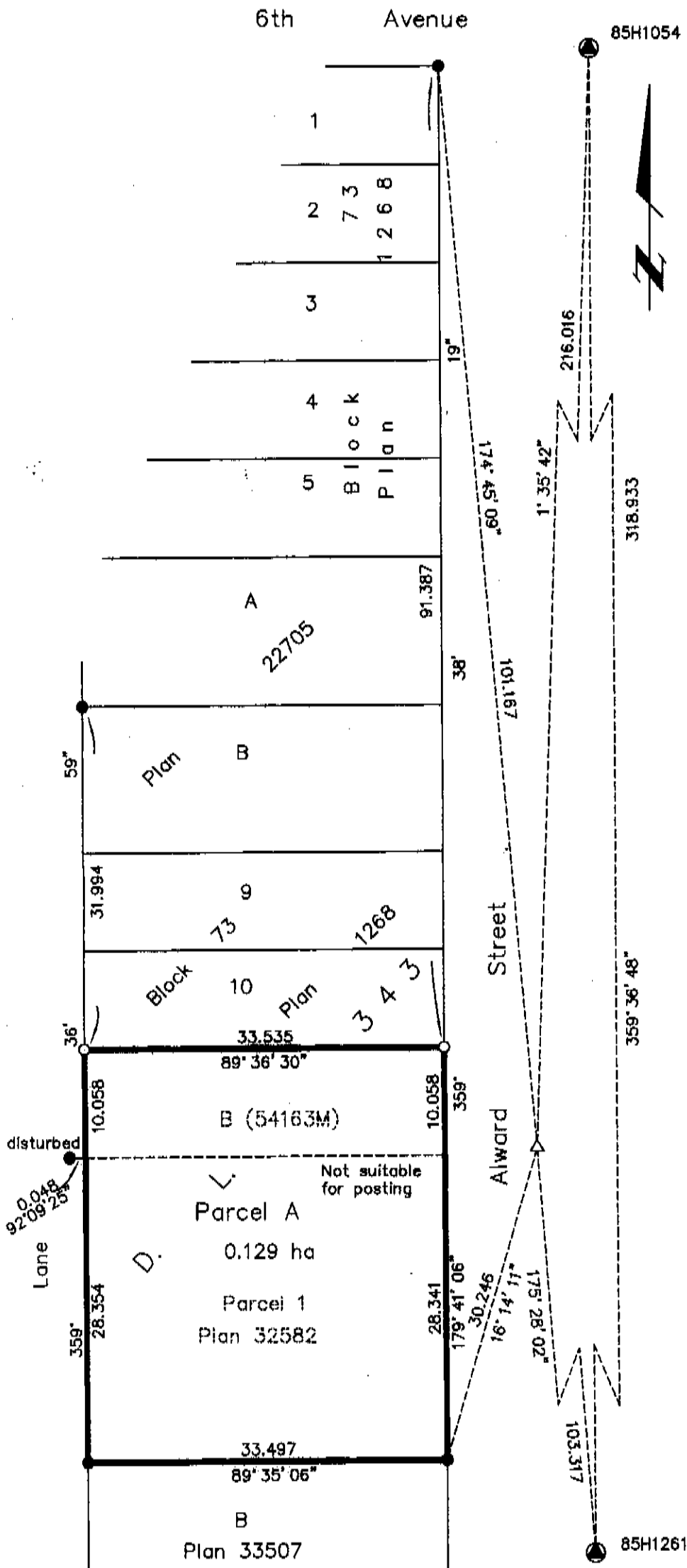
LEGEND

- Standard Iron Post Found
- Standard Iron Post Placed
- ⊙ Control Monument Found
- △ Traverse Hub Placed

I, Dale Keown, a British Columbia Land Surveyor, of Prince George, in British Columbia, certify that I was present at and personally superintended the survey represented by this plan, and that the survey and plan are correct. The field survey was completed on the 18th day of August, 2005. The plan was completed and checked, and the checklist filed under #36563, on the 30th day of August, 2005.

Dale Keown

Dale Keown, B.C.L.S.



Owner: Prince George Alano Society Inc. No. S9128

Thomas M Burke
Authorized Signatory

Thomas M Burke
Print Name

Adrienne Tremblay
Authorized Signatory

ADRIENNE TREMBLAY
Print Name

Dale Keown
Witness to both

Dale Keown
Print Name

185 Quebec Street
Address

Prince George B.C. V2L 1W1
Postal Code

B.C. Land Surveyor
Occupation

This plan lies within the Fraser-Fort George Regional District.

KILBRIDE LAND SURVEYING LTD.
British Columbia Land Surveyors
Prince George, B.C.
Ph: (250) 562-1196 Fax: 562-3656

F.B.- XR 6

D.L.- 343

File No. - 050316