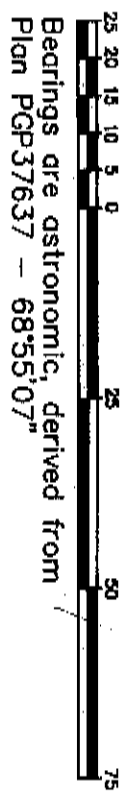


REFERENCE PLAN OF EASEMENT
 OVER PART OF LOT 3, DISTRICT
 LOT 4031, CARIBOO DISTRICT,
 PLAN 10973.

Pursuant to Section 99
 of the Land Title Act.

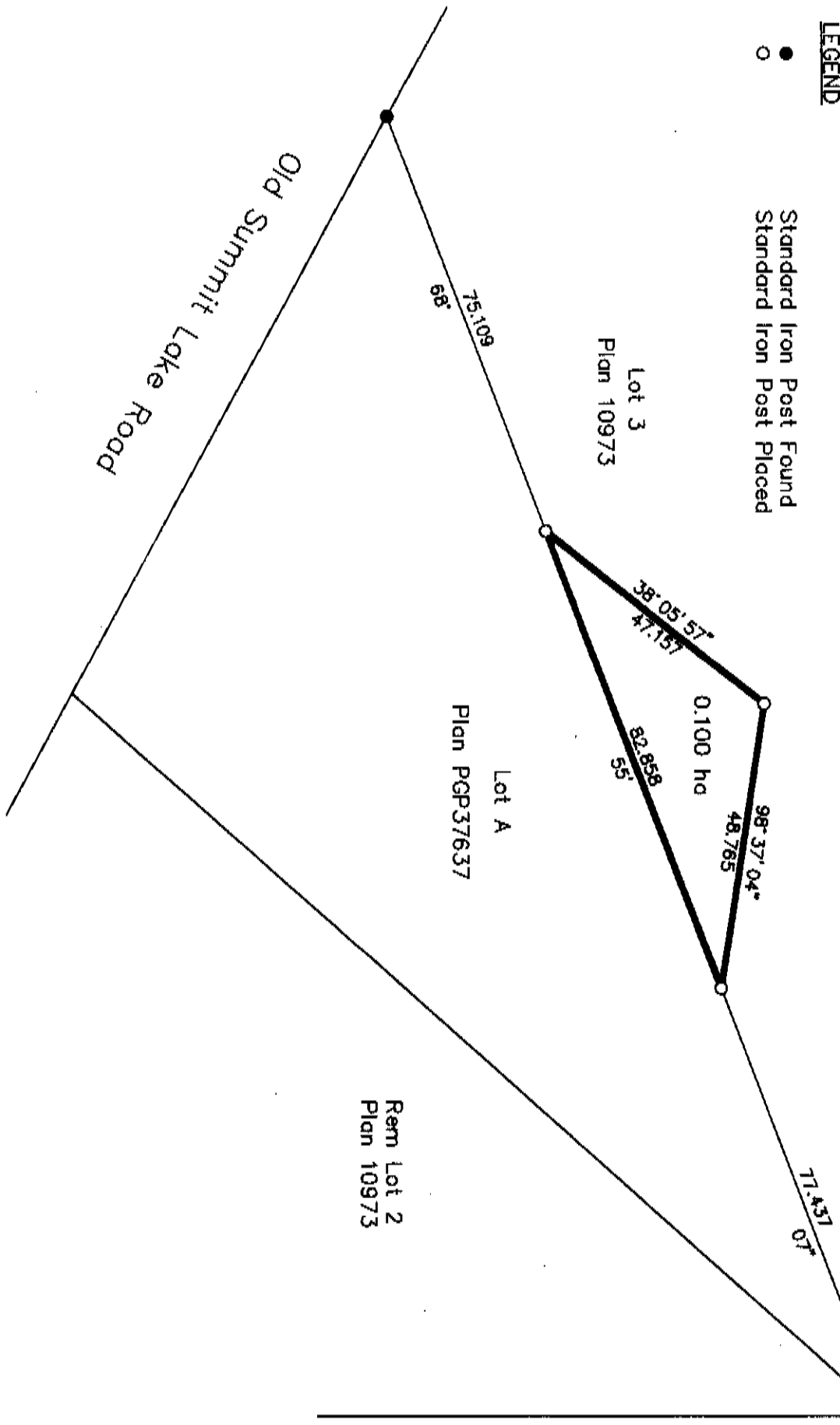
B.C.G.S. 93J.007

Scale: 1 : 1000 (Distances are in metres)



LEGEND

- Standard Iron Post Found
- Standard Iron Post Placed



2 Pgn 22647
 1

PLAN NO. BCP 19490

Deposited in the Land Title Office at New Westminster this 30th day of May 2005.

REGISTRAR

BR 367538



I, Gordon Kilbride, a British Columbia Land Surveyor, of Prince George, in British Columbia, certify that I was present at and personally superintended the survey represented by this plan, and that the survey and plan are correct. The field survey was completed on the 31 day of May, 2005. The plan was completed and checked, and the checklist filed under #32849, on the 16 day of June, 2005.

Gordon Kilbride
 Gordon Kilbride, B.C.L.S.

This plan lies within the Fraser-Fort George Regional District.

KILBRIDE LAND SURVEYING LTD.			
<i>British Columbia Land Surveyors</i>			
Prince George, B.C.			
Ph: (250) 562-1196 Fax: 562-3656			
F.B.- XJ 32	DL- 4031	File No. - 050196	