

Deposited in the Land Title Office at New Westminster this day of 200

REGISTRAR

REFERENCE PLAN OF EASEMENT OVER LOTS 1 THROUGH 11, DISTRICT LOT 1599, CARIBOO DISTRICT, PLAN BCP/19419 Pursuant to Section 99 of the Land Title Act.

B.C.G.S. 93G.086

Scale: 1 : 750 (Distances are in metres)



Grid bearings are derived from observations between control monuments 86H1720 and 86h1722, integrated survey area number 39, City of Prince George, B.C. NAD83(CSRS)

Note: This plan shows ground level measured distances. Prior to computation of U.T.M. co-ordinates multiply by the combined factor 0.9994887.

LEGEND

- Standard Iron Post Found
- ⊙ Control Monument Found

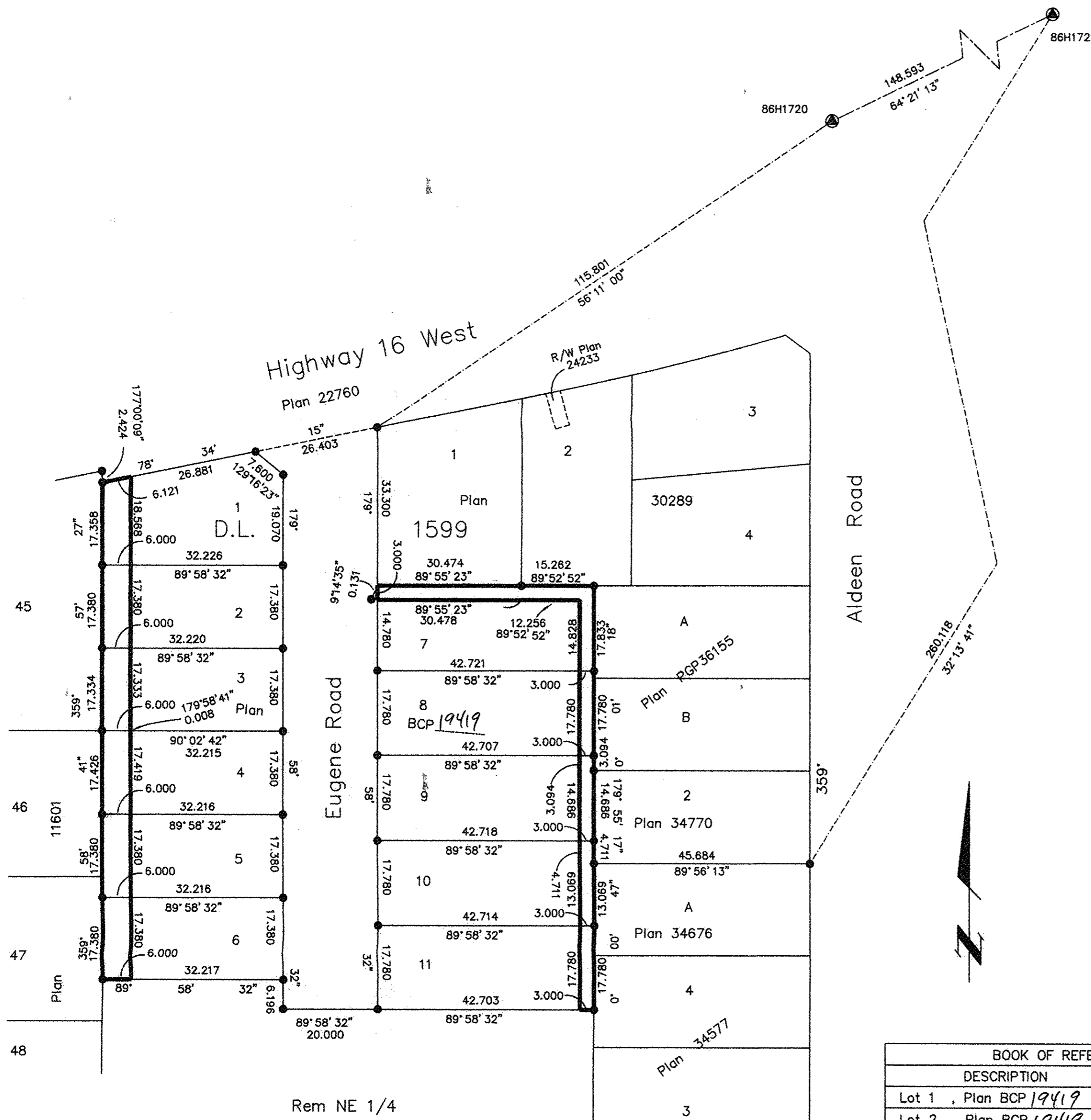
I, Gordon Kilbride, a British Columbia Land Surveyor, of Prince George, in British Columbia, certify that I was present at and personally supervised the survey represented by this plan, and that the survey and plan are correct. The field survey was completed on the 2 day of June, 2005. The plan was completed and checked, and the checklist filed under #33410, on the 28 day of June, 2005.

Gordon Kilbride
Gordon Kilbride, B.C.L.S.

This plan lies within the Fraser-Fort George Regional District.

KILBRIDE LAND SURVEYING LTD.
British Columbia Land Surveyors
Prince George, B.C.
Ph: (250) 562-1196 Fax: 562-3656

F.B.- JJ4/04 D.L.- 1599 File No. -050199E



BOOK OF REFERENCE	
DESCRIPTION	AREA
Lot 1 , Plan BCP 19419 ,	108 m ²
Lot 2 , Plan BCP 19419 ,	104 m ²
Lot 3 , Plan BCP 19419 ,	104 m ²
Lot 4 , Plan BCP 19419 ,	104 m ²
Lot 5 , Plan BCP 19419 ,	105 m ²
Lot 6 , Plan BCP 19419 ,	104 m ²
Lot 7 , Plan BCP 19419 ,	197 m ²
Lot 8 , Plan BCP 19419 ,	53 m ²
Lot 9 , Plan BCP 19419 ,	53 m ²
Lot 10 , Plan BCP 19419 ,	53 m ²
Lot 11 , Plan BCP 19419 ,	53 m ²

Rem NE 1/4
D. L. 1599