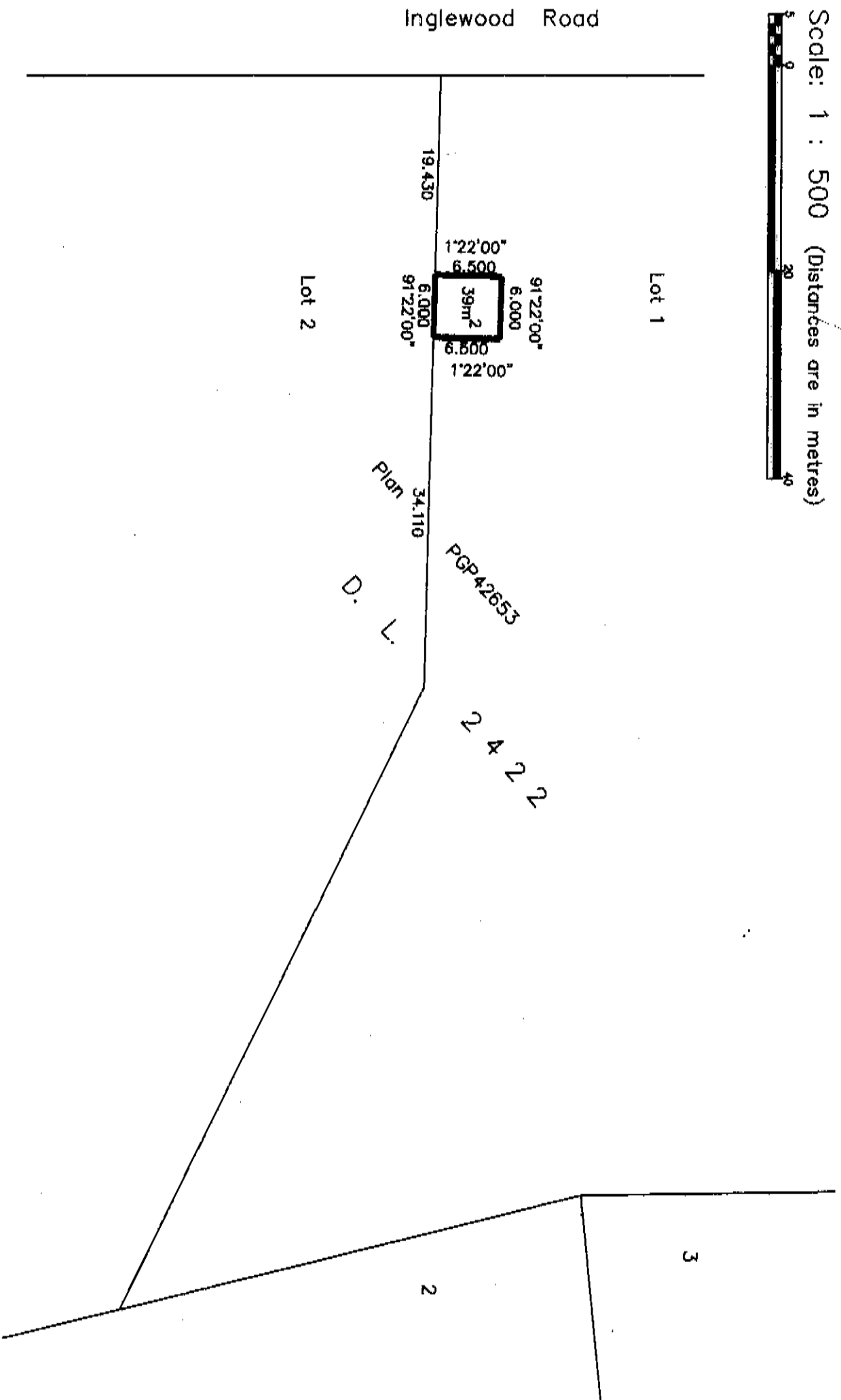


EXPLANATORY PLAN FOR EASEMENT  
 ON PART OF LOT 1, DISTRICT  
 LOT 2422, CARIBOO DISTRICT,  
 PLAN PGP42653.

Pursuant to Section 99(1)(e)  
 of the Land Title Act.

B.C.G.S. 93J.006

Scale: 1 : 500 (Distances are in metres)



PLAN NO. BCP 19238

Deposited in the Land Title Office at New  
 Westminster this 17 day of Aug. 2005.

REGISTRAR

REF # BX 261610

Certified Correct, according to Land Title  
 Office Records. This 10th day of  
 August, 2005. The plan was  
 completed and checked, and the checklist  
 filed under #35553, on the 11th day  
 of August, 2005.

*Dale Keown*  
 Dale Keown, B.C.L.S.

This plan lies within the Fraser-Fort  
 George Regional District.

<b>KIBBRIDE LAND SURVEYING LTD.</b>	
<i>British Columbia Land Surveyors</i>	
Prince George, B.C.	
Ph: (250) 562-1196 Fax: 562-3656	
F.B.-	File No. - Pine-Ease
D.L.- 2422	