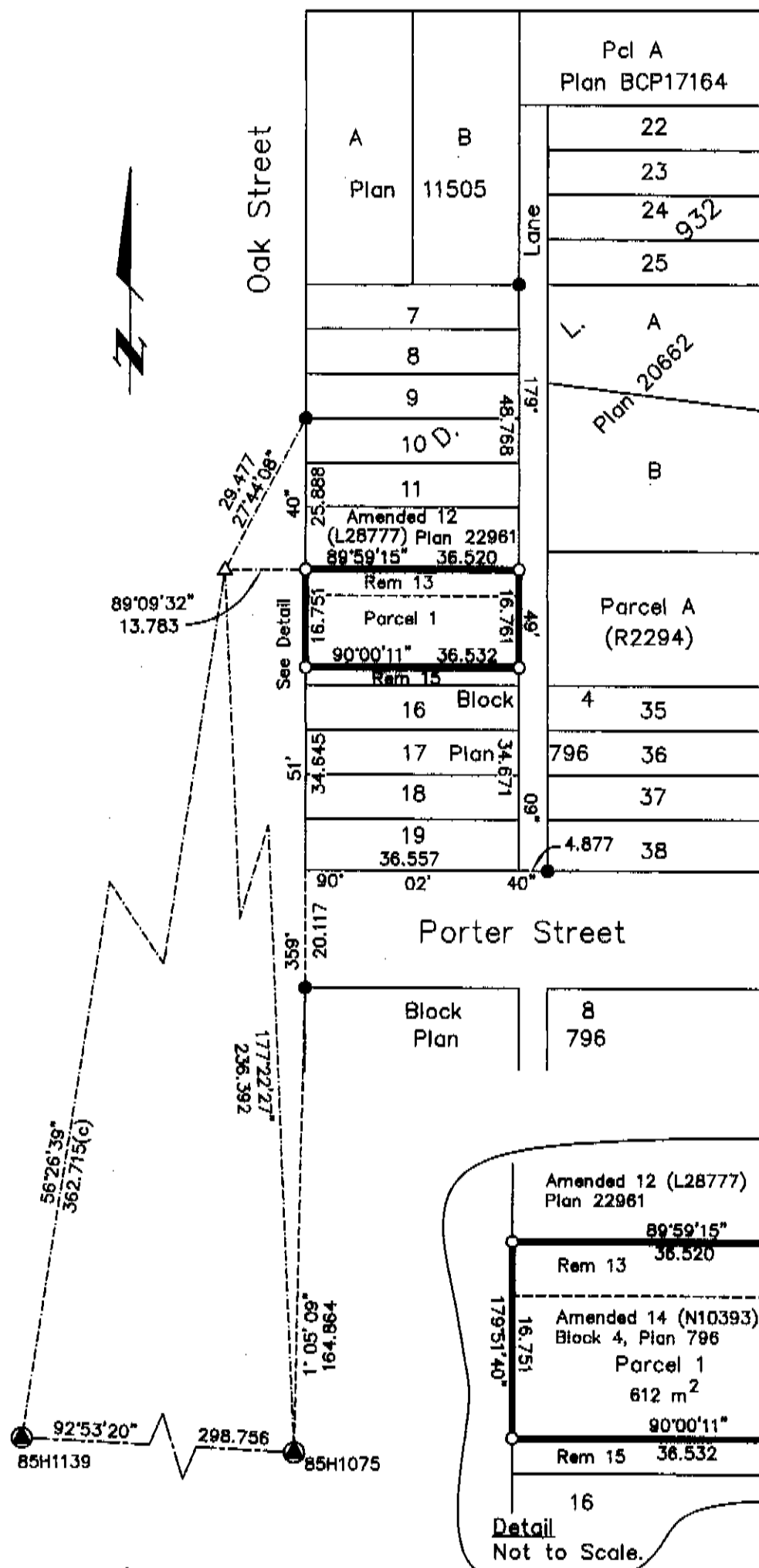


Deposited in the Land Title Office at New Westminster this 15 day of August 2005.

20th Avenue



J McDonald per [signature]
 D REGISTRAR
 BX 260052

REFERENCE PLAN OF CONSOLIDATION OF LOT 13, BLOCK 4, DISTRICT LOT 932, CARIBOO DISTRICT, PLAN 796 EXCEPT PLAN 22961 AND OF AMENDED LOT 14 (N10393), BLOCK 4, DISTRICT LOT 932, CARIBOO DISTRICT, PLAN 796. Pursuant to Section 100(1)(b) of the Land Title Act.

B.C.G.S. 93G.097

Scale: 1 : 1000 (Distances are in metres)



Grid bearings are derived from observations between control monuments 85H1075 and 85H1139, integrated survey area number 39, City of Prince George, B.C. NAD83(CSRS)

Note: This plan shows ground level measured distances. Prior to computation of U.T.M. co-ordinates multiply by the combined factor

LEGEND

- Standard Iron Post Found
- Standard Iron Post Placed
- ⊙ Control Monument Found
- △ Traverse Hub Placed

Owner: Denny's Woodwork & Construction Ltd.
 Inc. No. 385770

Dennis Kwiatkowski
 Authorized Signatory
 DENNIS KWIAKOWSKI
 Print Name

Authorized Signatory
 Print Name

C BURTON
 Witness to both
 C BURTON
 Print Name
 185 Quebec St.
 Address
 PRINCE GEORGE BC V2L 1W1
 Postal Code
 Office Mgr.
 Occupation

I, Gordon Kilbride, a British Columbia Land Surveyor, of Prince George, in British Columbia, certify that I was present at and personally superintended the survey represented by this plan, and that the survey and plan are correct. The field survey was completed on the 16 day of June, 2005. The plan was completed and checked, and the checklist filed under #33721, on the 6th day of July, 2005.

Gordon Kilbride
 Gordon Kilbride, B.C.L.S.

This plan lies within the Fraser-Fort George Regional District.

KILBRIDE LAND SURVEYING LTD.
 British Columbia Land Surveyors
 Prince George, B.C.
 Ph: (250) 562-1196 Fax: 562-3656

F.B.- XB 62	D.L.- 932	File No. - 050223
-------------	-----------	-------------------