

Deposited in the Land Title Office at New Westminster this 26 day of July 2005

REGISTRAR

REF. # BX 356233

REFERENCE PLAN OF EASEMENT OVER PART OF LOT A, DISTRICT LOT 4377, CARIBOO DISTRICT, PLAN BCP 18897.

Pursuant to Section 99 of the Land Title Act.

B.C.G.S. 93G.097

Scale: 1 : 2500 (Distances are in metres)

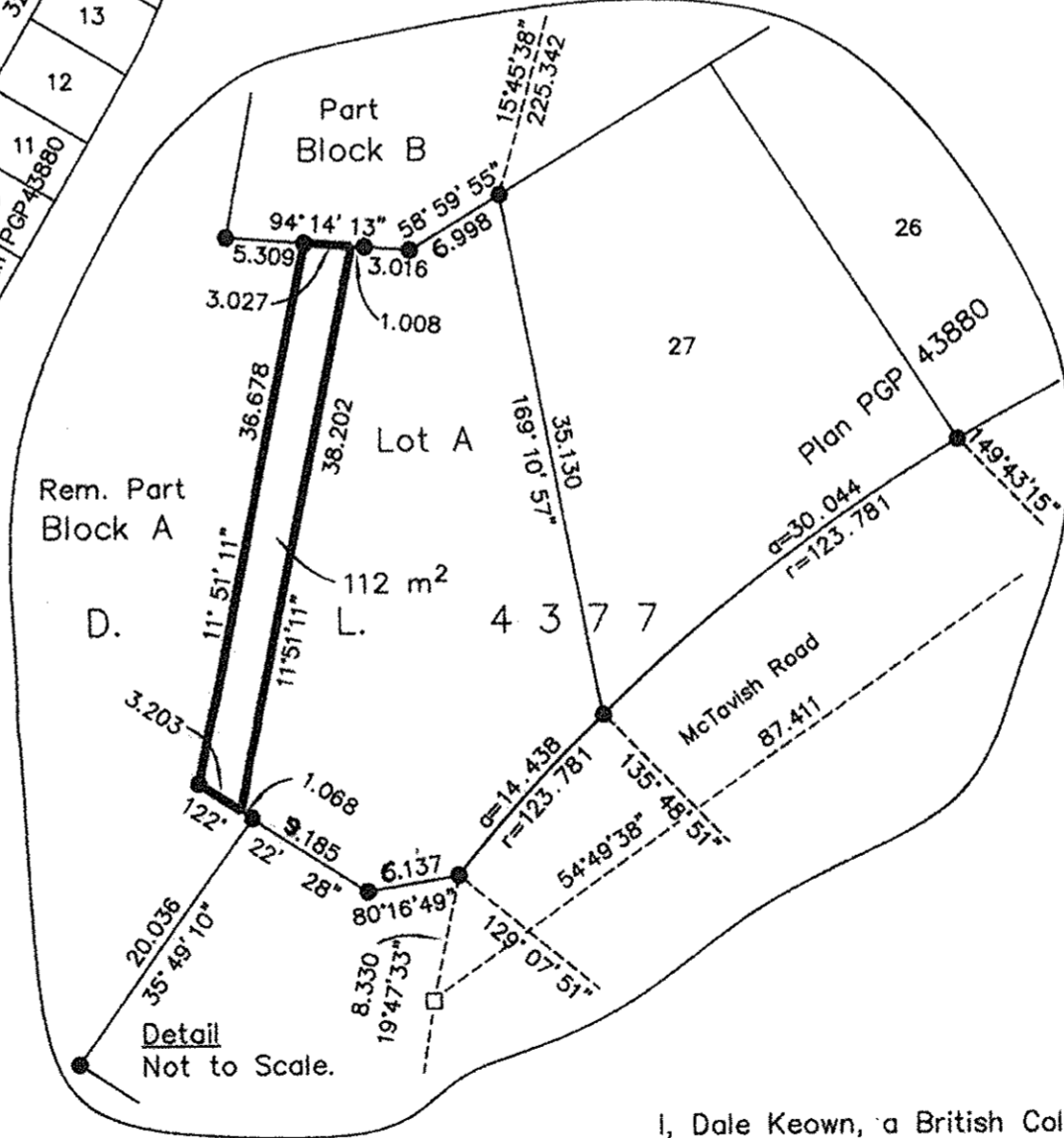
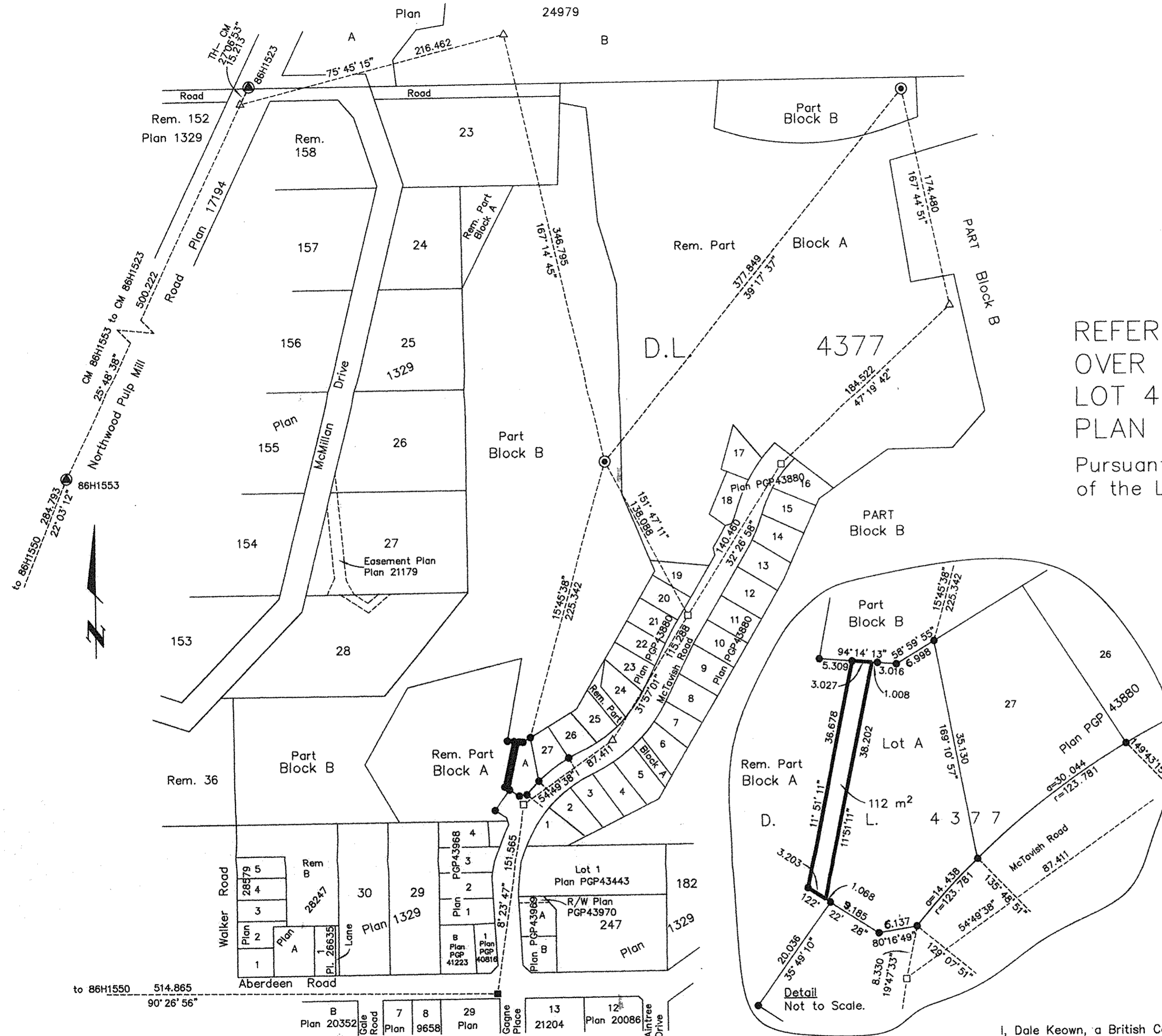


Grid bearings are derived from observations between control monuments 86H1523 and 86H1553, integrated survey area number 39, City of Prince George, B.C. NAD83(CSRS)

Note: This plan shows ground level measured distances. Prior to computation of U.T.M. co-ordinates multiply by the combined factor 0.999500

LEGEND

- Standard Concrete Post Found
- Lead Plug Found
- Lead Plug Placed
- Standard Iron Post Found
- Control Monument Found
- △ Traverse Hub Placed



I, Dale Keown, a British Columbia Land Surveyor, of Prince George, in British Columbia, certify that I was present at and personally superintended the survey represented by this plan, and that the survey and plan are correct. The field survey was completed on the 3rd day of June, 2005. The plan was completed and checked, and the checklist filed under # 32697, on the 14th day of June, 2005.

This plan lies within the Fraser-Fort George Regional District.

Dale Keown
Dale Keown, B.C.L.S.

KILBRIDE LAND SURVEYING LTD.
British Columbia Land Surveyors
Prince George, B.C.
Ph: (250) 562-1196 Fax: 562-3656

F.B.- RA	D.L.- 4377	File No. - 050045E
----------	------------	--------------------