

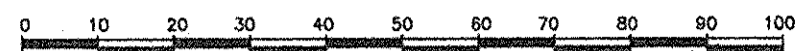
PLAN OF SUBDIVISION OF
PARCEL 1, PLAN PGP46283,
DISTRICT LOT 925
CARIBOO DISTRICT.

18637

PLAN No. BCP -----

DEPOSITED IN THE LAND TITLE OFFICE
AT NEW WESTMINSTER, B.C. THIS 12
DAY OF JULY 2005.

B.C.G.S. 93G.087



SCALE = 1 : 1000
DISTANCES ARE SHOWN IN METRES.

THIS PLAN SHOWS GROUND-LEVEL MEASURED DISTANCES.
PRIOR TO COMPUTATION OF U.T.M. COORDINATES, MULTIPLY
BY COMBINED FACTOR 0.99951093.

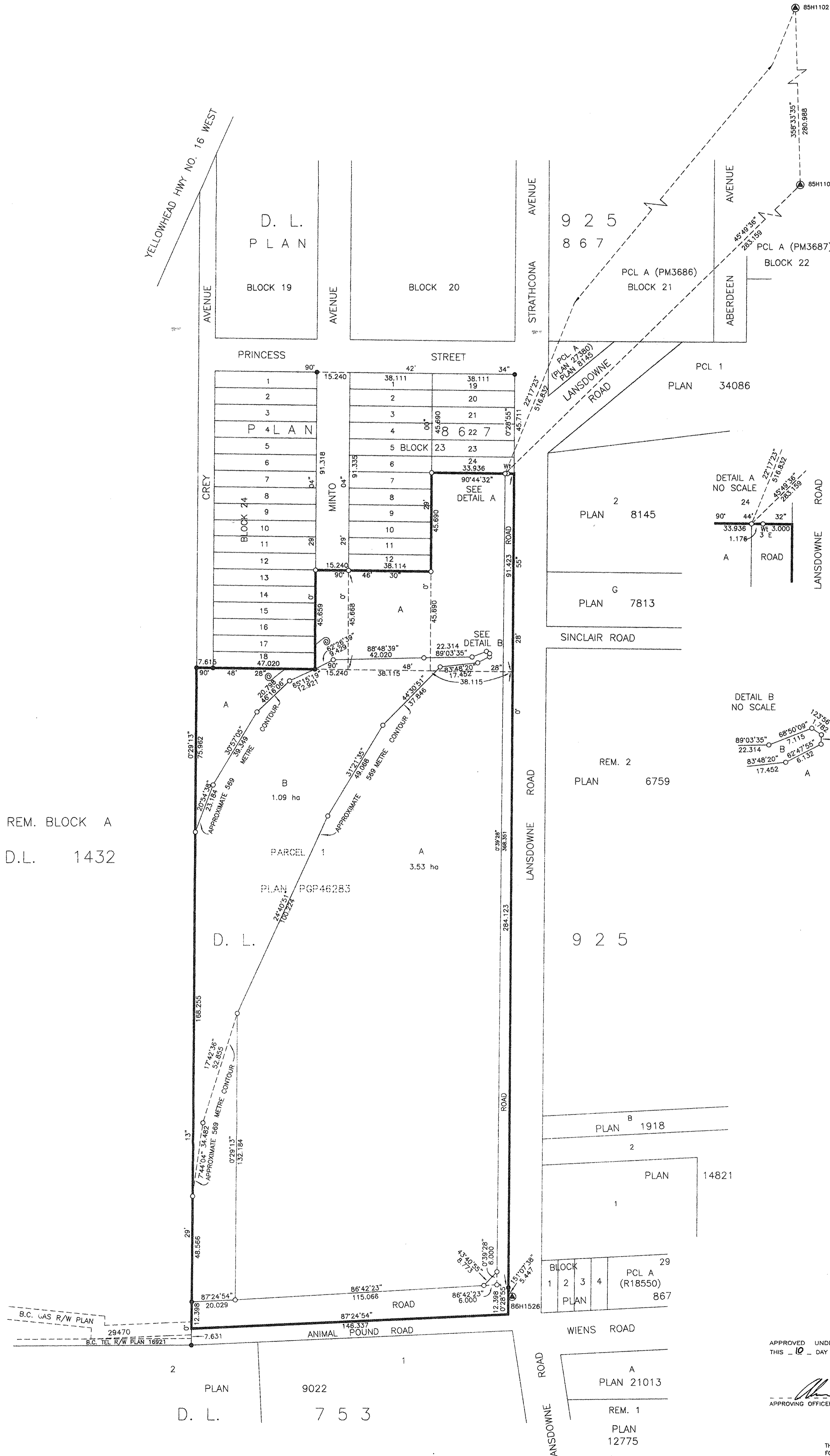
GRID BEARINGS ARE DERIVED FROM OBSERVATIONS
BETWEEN CONTROL MONUMENTS 85H1102, AND 85H1103,
INTEGRATED SURVEY AREA NUMBER 39, PRINCE GEORGE.

LEGEND

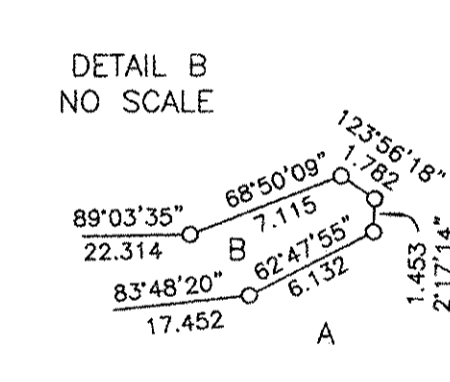
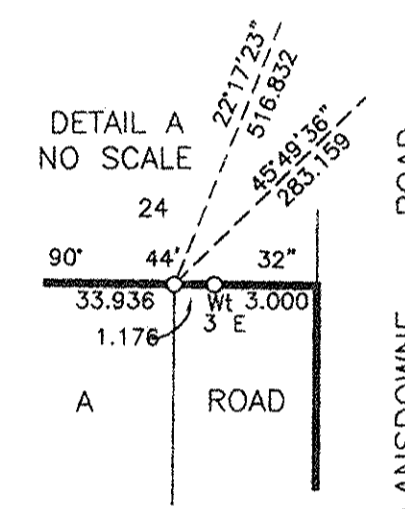
- STANDARD IRON POST FOUND
- STANDARD IRON POST PLACED
- ⊙ CONTROL MONUMENT

REGISTRAR

REF BX 547387



REM. BLOCK A
D.L. 1432



APPROVED UNDER THE LAND TITLE ACT
THIS 10 DAY OF JUNE 2005.

[Signature]
APPROVING OFFICER, CITY OF PRINCE GEORGE.

THIS PLAN LIES WITHIN THE FRASER-FORT GEORGE REGIONAL DISTRICT.

I HEREBY CERTIFY THAT THIS IS THE OFFICIAL
PLAN OF THE LANDS SHOWN OUTLINED HEREON.

I, RONALD L. JOHNS, A BRITISH COLUMBIA LAND SURVEYOR, OF PRINCE GEORGE, IN BRITISH COLUMBIA, CERTIFY THAT I WAS PRESENT AT AND PERSONALLY SUPERINTENDED THE SURVEY REPRESENTED BY THIS PLAN AND THAT THE SURVEY AND PLAN ARE CORRECT. THE SURVEY WAS COMPLETED ON THE 20TH DAY OF OCTOBER, 1998.

[Signature]

R. L. JOHNS LAND SURVEYING LTD.
LEGAL AND ENGINEERING SURVEYS
240 VICTORIA STREET
PRINCE GEORGE, B.C. V2L 2J4
PHONE: (250)562-5759
FAX: (250)562-5703

Original signed by
[Signature]
Dal Yatee