

PLAN NO. BCP 17734
BX141632

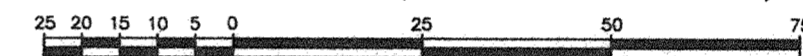
Deposited in the Land Title Office at New Westminster this 24 day of May 2005.

REGISTRAR

REFERENCE PLAN OF CONSOLIDATION OF LOT 46, PLAN 11088 AND LOT 1, PLAN 17047, DISTRICT LOT 4047, CARIBOO DISTRICT.

Pursuant to Section 100 of the Land Title Act. B.C.G.S. 93G.097

Scale: 1 : 1000 (Distances are in metres)



Grid bearings are derived from observations between control monuments 86H1814 and 87H3535, integrated survey area number 39, City of Prince George, B.C. NAD83(CSRS)

Note: This plan shows ground level measured distances. Prior to computation of U.T.M. co-ordinates multiply by the combined factor 0.9994894

LEGEND

- Standard Iron Post Found
- Standard Iron Post Placed
- ⊙ Control Monument Found

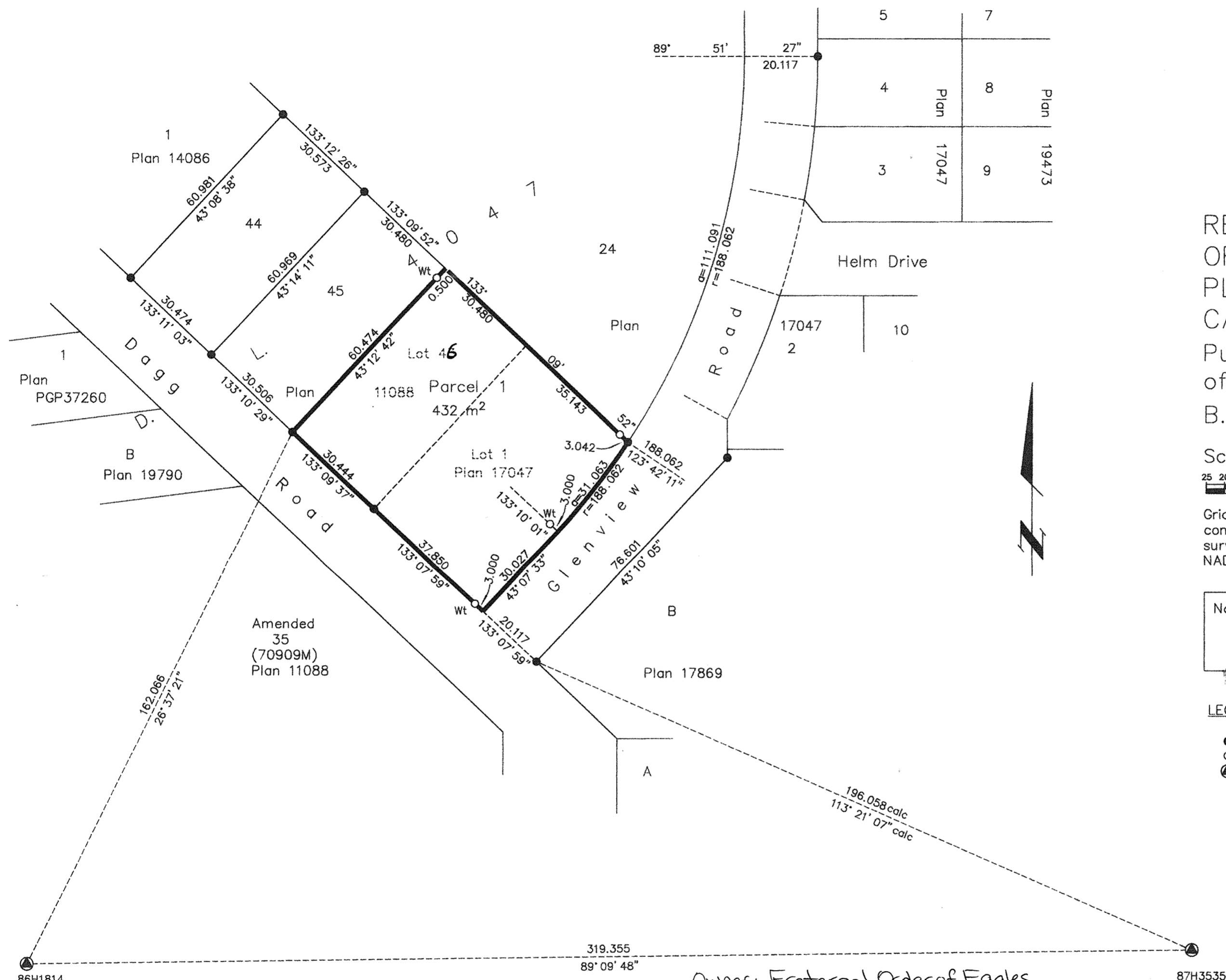
I, Dale Keown, a British Columbia Land Surveyor, of Prince George, in British Columbia, certify that I was present at and personally superintended the survey represented by this plan, and that the survey and plan are correct. The field survey was completed on the 29th day of April, 2005. The plan was completed and checked, and the checklist filed under #31026, on the 6th day of May, 2005.

Dale Keown
Dale Keown, B.C.L.S.

This plan lies within the Fraser-Fort George Regional District.

KILBRIDE LAND SURVEYING LTD.
British Columbia Land Surveyors
Prince George, B.C.
Ph: (250) 562-1196 Fax: 562-3656

F.B.- RA D.L.- 4047 File No. - 050135



Owner: City of Prince George

A/ Mayor *Don Bassermann*

Clerk *Sane Redloff*

Witness to both *Judy Dix*

Print Name *JUDY DIX*

Address *City Hall, 1100 Patricia Blvd., Prince George, BC, V2L 3V9*

Occupation *Exec. Assistant*

Owner: Fraternal Order of Eagles
Prince George Aerie No. 3318
LEASE PT 23359

Darcy Legeard
Authorized Signatory
Darcy Legeard

Robert Jalbert
Authorized Signatory
Robert Jalbert

Brenda Sieben
Witness as to both signatures
Brenda Sieben
1100 Patricia Blvd. Prince George, BC V2L 3V9
PROPERTY ADMINISTRATOR