

Deposited in the Land Title Office at New Westminster this 2<sup>nd</sup> day of May 2005.

REGISTRAR

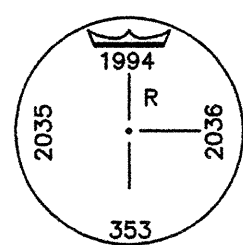
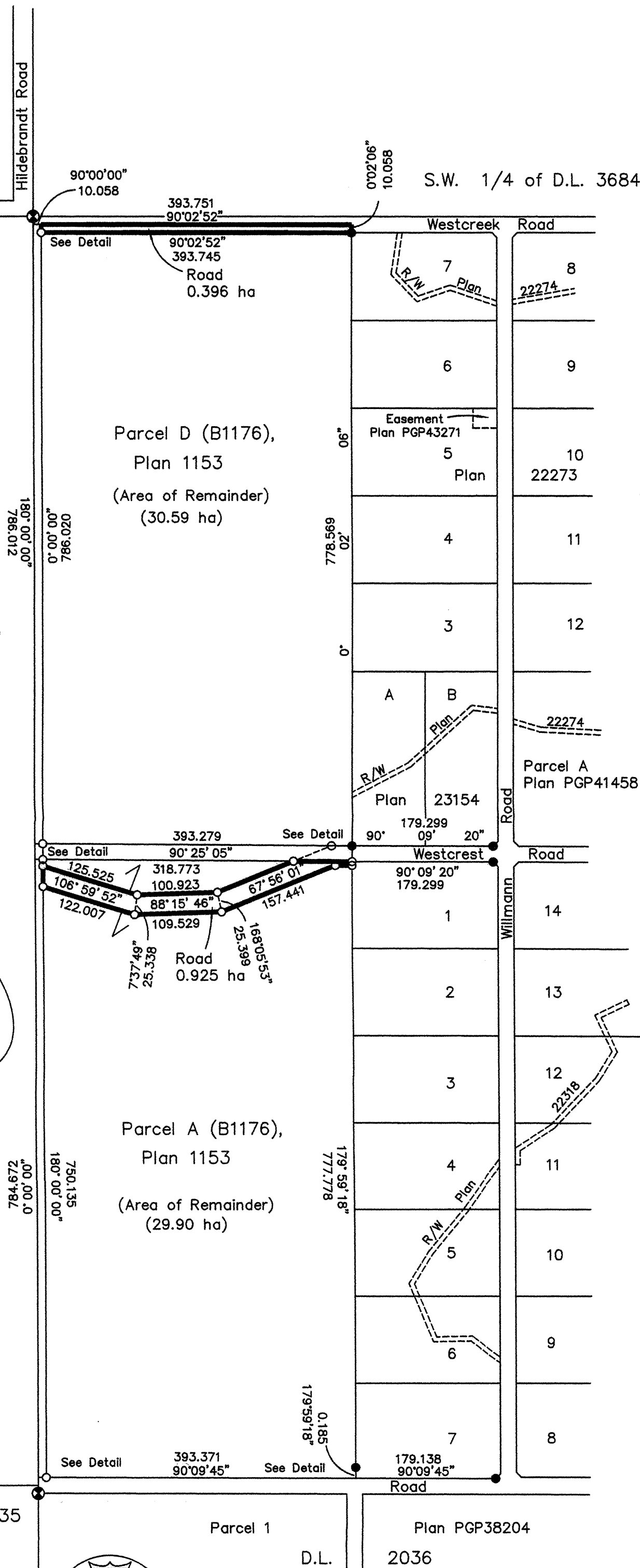
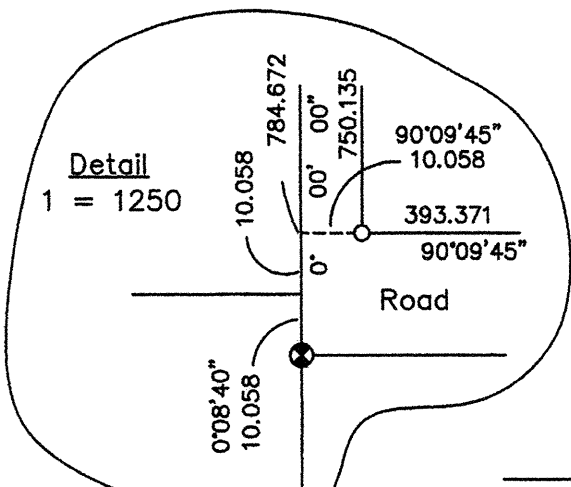
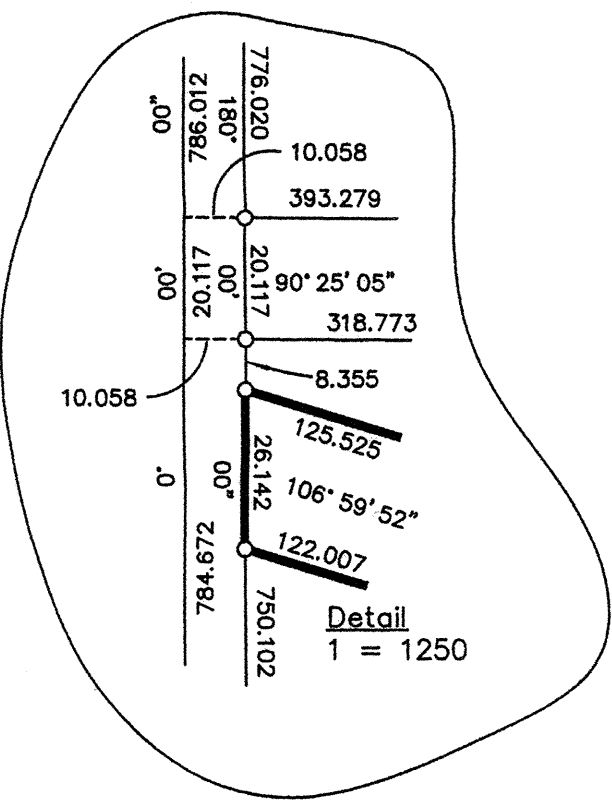
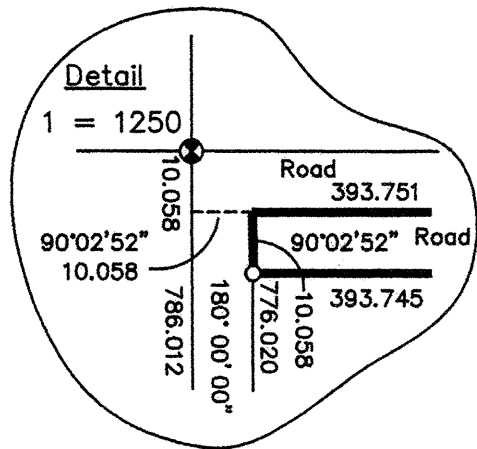
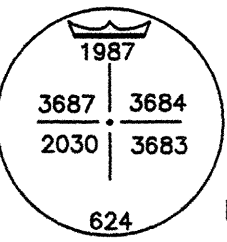
REFERENCE PLAN OF ROAD DEDICATION OVER PARCEL A AND PARCEL D (B1176), PLAN 1153, DISTRICT LOT 3683, CARIBOO DISTRICT. Pursuant to Section 107 of the Land Title Act. B.C.G.S. 93G.096

Scale: 1: 5000 (Distances are in metres)

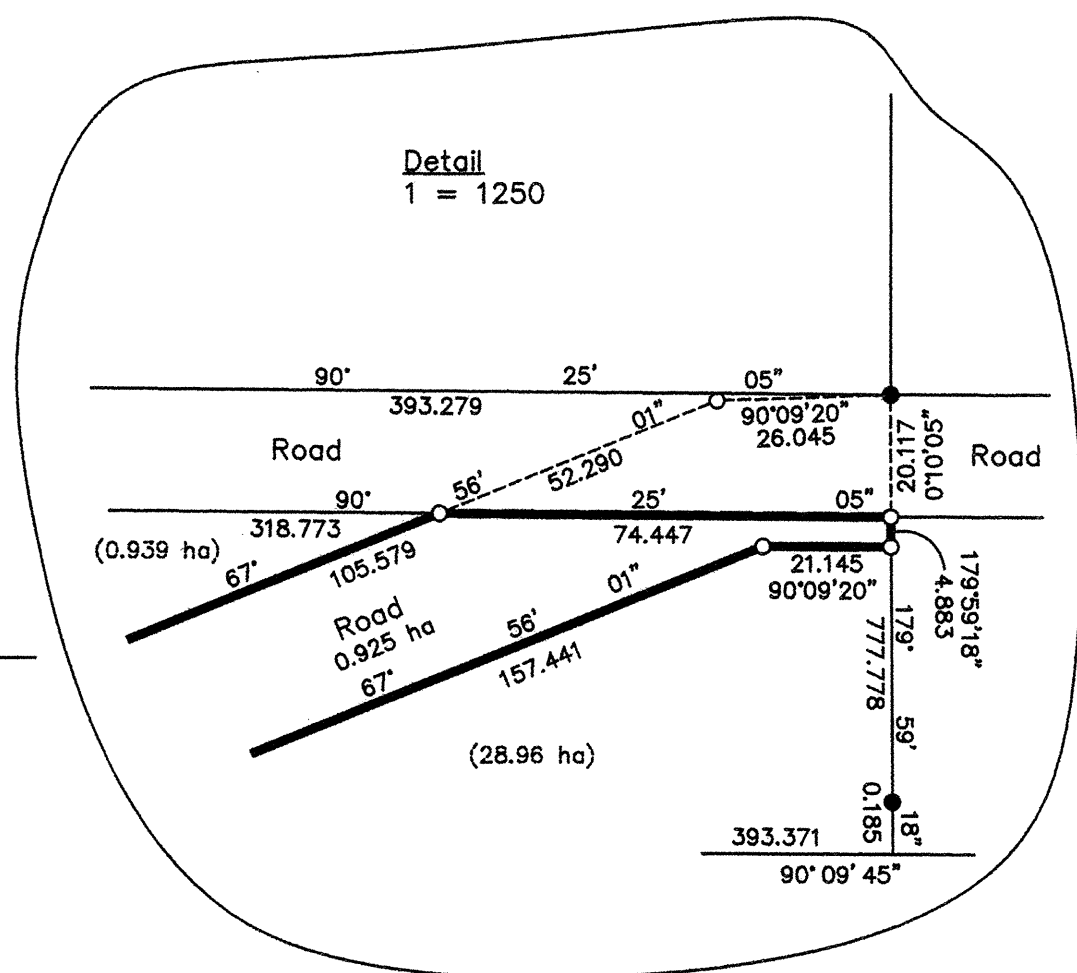
Bearings are astronomic, derived from Plan 1153 - West Bdy D.L. 3683 = North  
Bearings to BTs are Magnetic

LEGEND

- Standard Capped Post Found
- Standard Iron Post Found
- Standard Iron Post Placed



Found BTs mkd meas  
0.27 Birch 292° 5.52 5.52  
0.23 Balsam 164° 6.34 6.34



I, Gordon Kilbride, a British Columbia Land Surveyor, of Prince George, in British Columbia, certify that I was present at and personally superintended the survey represented by this plan, and that the survey and plan are correct. The field survey was completed on the 30 day of December, 2004. The plan was completed and checked, and the checklist filed under # 26059, on the 7th day of January, 2005.

*Gordon Kilbride*  
Gordon Kilbride, B.C.L.S.

This plan lies within the Fraser-Fort George Regional District.

Approved under the Land Title Act this 7<sup>th</sup> day of January, 2005.  
*[Signature]*  
Approving Officer  
City of Prince George

I hereby certify that this is the Official Plan of the right of way shown outlined hereon.  
Original signed by  
Dai Yates  
For Surveyor General MAY 11, 2005  
Victoria, B.C.  
File: 740 8285  
740 8201

**KILBRIDE LAND SURVEYING LTD.**  
British Columbia Land Surveyors  
Prince George, B.C.  
Ph: (250) 562-1196 Fax: 562-3656  
F.B.- XB39 D.L.- 3683 File No. -040397