

EXPLANATORY PLAN OF  
LEASE OF ONE STORY  
BUILDINGS ON THE NORTH 1/2  
OF DISTRICT LOT 749,  
CARIBOO DISTRICT, EXCEPT  
PLANS A227 AND PGP43431.

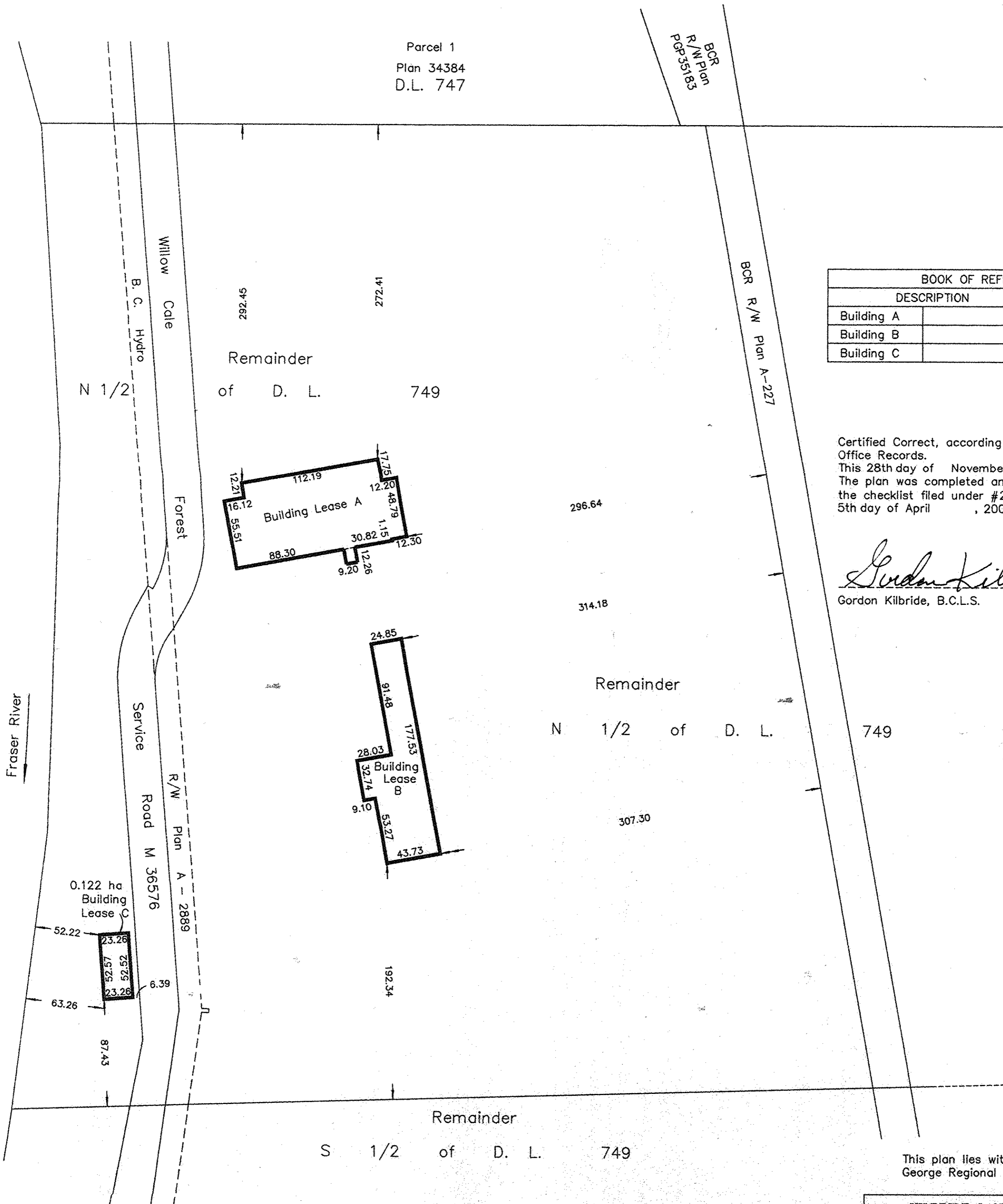
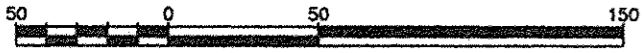
PLAN NO. BCP 17054

Deposited in the Land Title Office at New  
Westminster this day of 2005

REGISTRAR

Pursuant to Section 99  
of the Land Title Act.  
B.C.G.S. 93G.087

Scale: 1 : 2500 (Distances are in metres)



BOOK OF REFERENCE	
DESCRIPTION	AREA
Building A	0.908 ha
Building B	0.634 ha
Building C	0.122 ha

Certified Correct, according to Land Title  
Office Records.  
This 28th day of November, 2003.  
The plan was completed and checked, and  
the checklist filed under #29484, on the  
5th day of April, 2005.

*Gordon Kilbride*  
Gordon Kilbride, B.C.L.S.

This plan lies within the Fraser-Fort  
George Regional District.

**KILBRIDE LAND SURVEYING LTD.**  
British Columbia Land Surveyors  
Prince George, B.C.  
Ph: (250) 562-1196 Fax: 562-3656

F.B.- RA    D.L.- 749    File No. - 030241-1