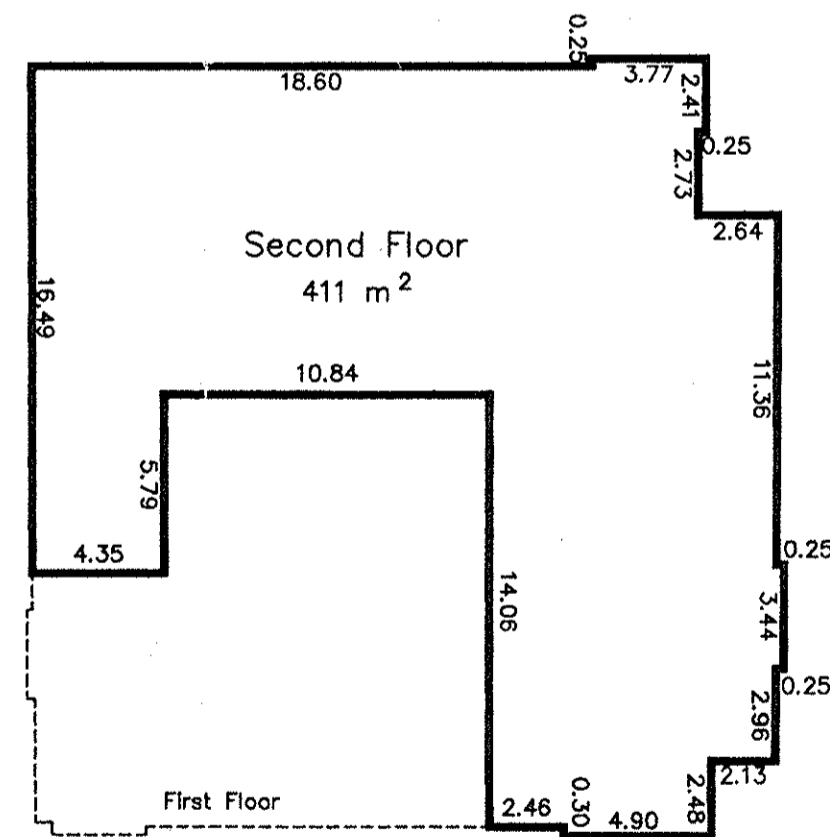
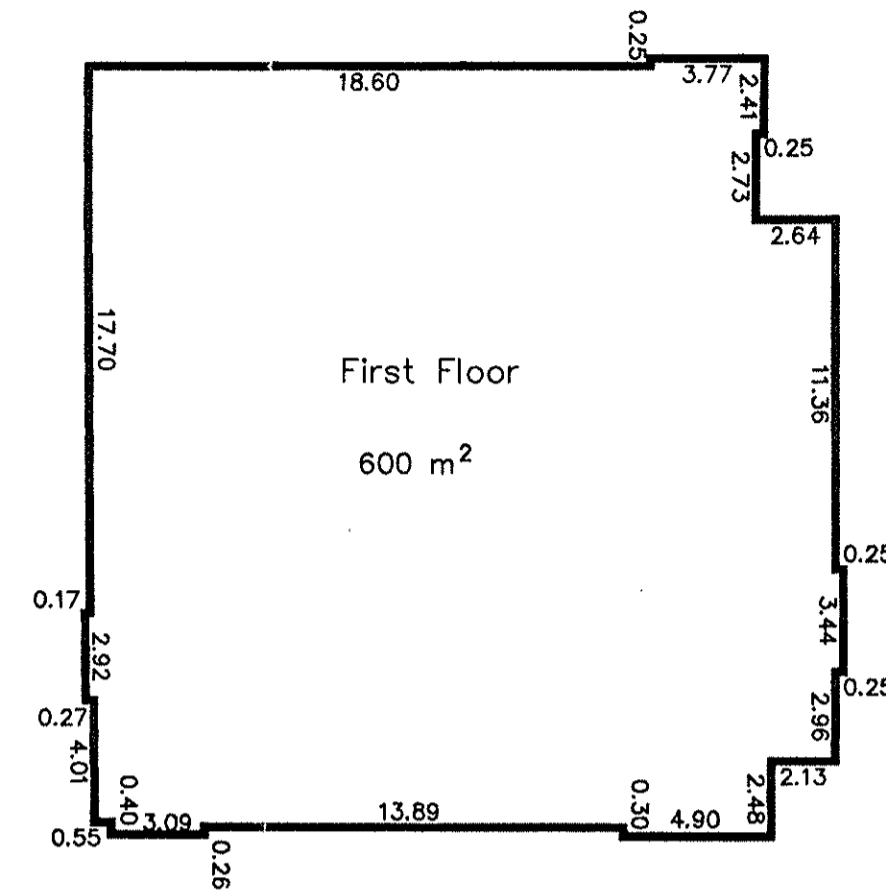
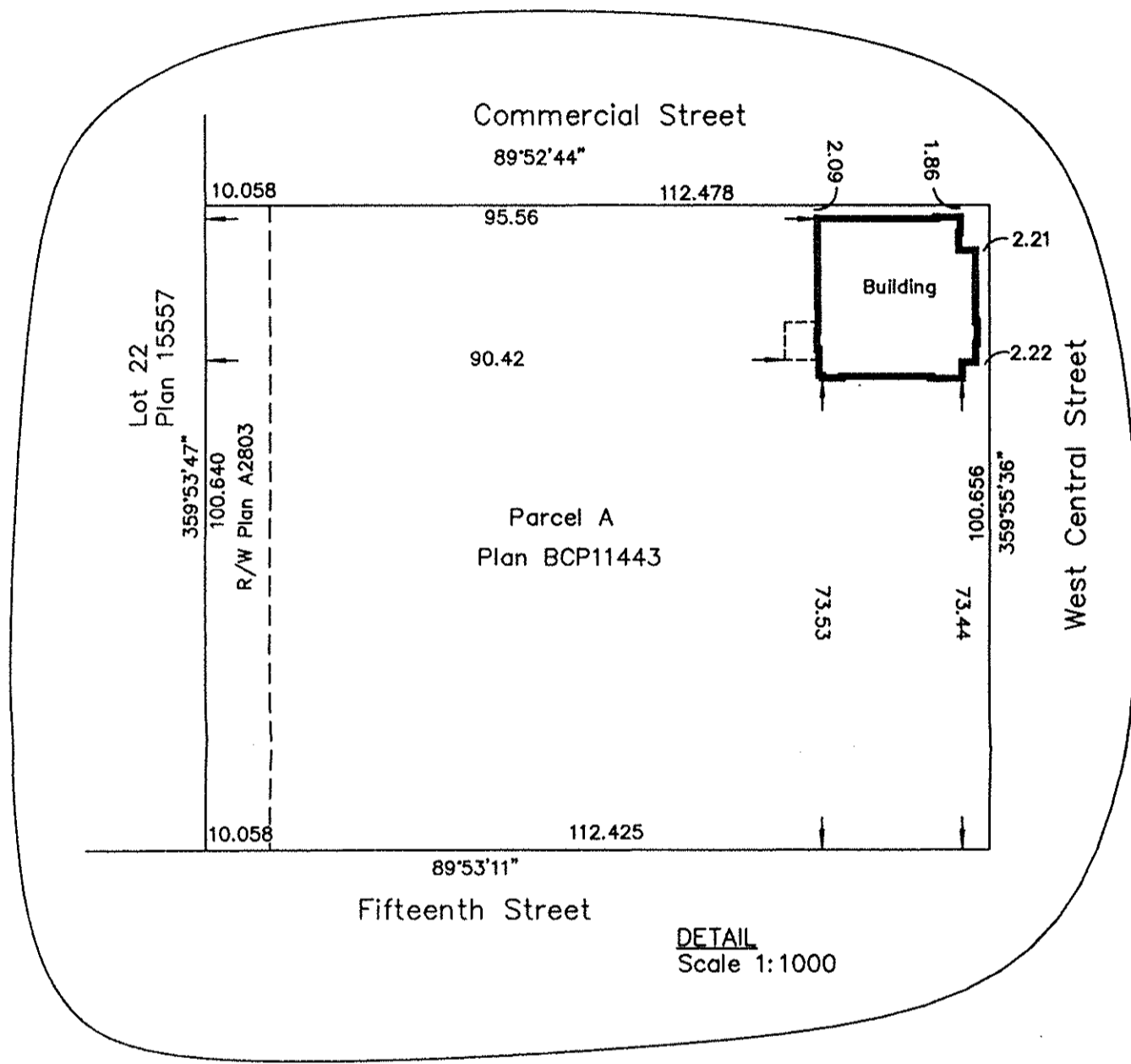


PLAN NO. BCP 17013

Deposited in the Land Title Office at New Westminster this 11th day of April 2005.

REGISTRAR

BX 523574



EXPLANATORY PLAN OF LEASE OF A TWO STORY BUILDING SITUATED ON PART OF PARCEL A, DISTRICT LOT 936, CARIBOO DISTRICT, PLAN BCP11443.

Pursuant to Section 99 of the Land Title Act. B.C.G.S. 93G.097

Scale: 1 : 250 (Distances are in metres)

Certified Correct, according to Land Title Office Records and Field measurements. This 18th day of February, 2005. The plan was completed and checked, and the checklist filed under # 28702, on the day day of March, 2005.

Gordon Kilbride
Gordon Kilbride, B.C.L.S.

This plan lies within the Fraser-Fort George Regional District.

KILBRIDE LAND SURVEYING LTD. British Columbia Land Surveyors Prince George, B.C. Ph: (250) 562-1196 Fax: 562-3656		
F.B.- XI 06	D.L.- 936	File No. - 050039

ORIGINAL