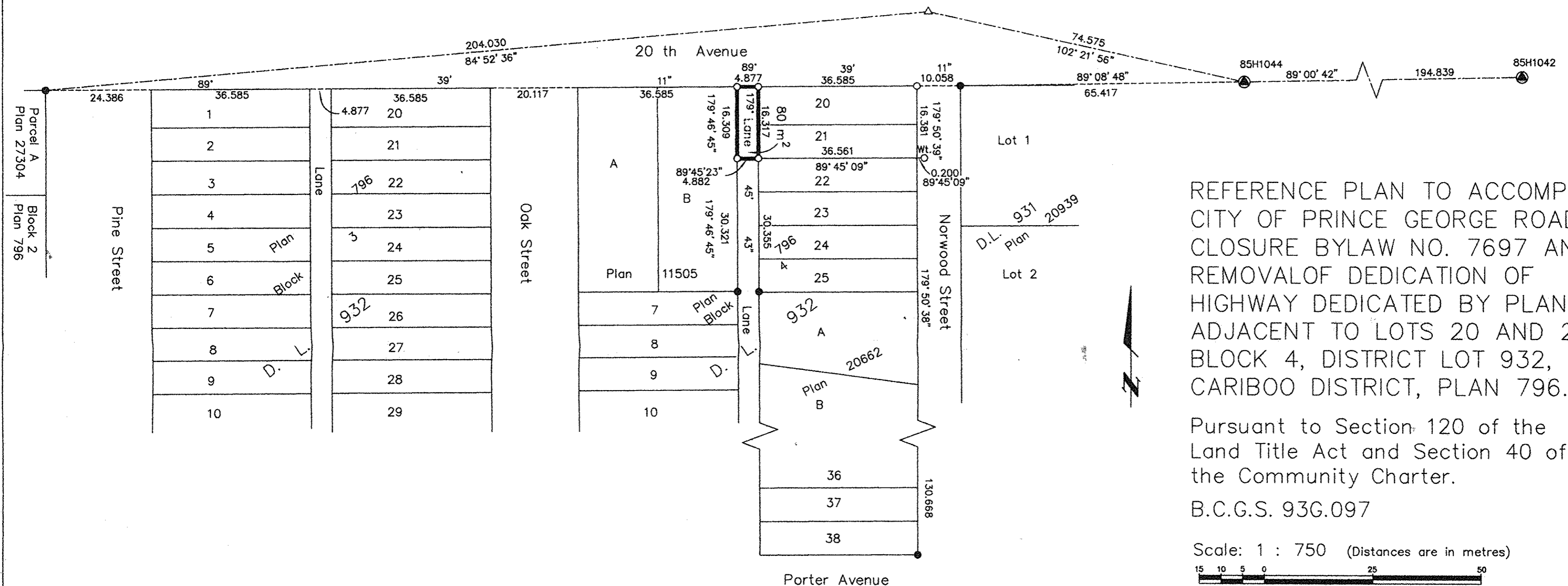


REGISTRAR

B7165882



REFERENCE PLAN TO ACCOMPANY CITY OF PRINCE GEORGE ROAD CLOSURE BYLAW NO. 7697 AND REMOVAL OF DEDICATION OF HIGHWAY DEDICATED BY PLAN 796, ADJACENT TO LOTS 20 AND 21, BLOCK 4, DISTRICT LOT 932, CARIBOO DISTRICT, PLAN 796.

Pursuant to Section 120 of the Land Title Act and Section 40 of the Community Charter.

B.C.G.S. 93G.097

Scale: 1 : 750 (Distances are in metres)



Grid bearings are derived from observations between control monuments 85H1044 and 85H1042, integrated survey area number 39, City of Prince George, B.C. NAD83(CSRS)

Note: This plan shows ground level measured distances. Prior to computation of U.T.M. co-ordinates multiply by the combined factor 0.9995145

LEGEND

- Standard Iron Post Found
- Standard Iron Post Placed
- ⊙ Control Monument Found
- △ Traverse Hub Placed

I, Dale Keown, a British Columbia Land Surveyor, of Prince George, in British Columbia, certify that I was present at and personally superintended the survey represented by this plan, and that the survey and plan are correct. The field survey was completed on the 26 day of October, 2004. The plan was completed and checked, and the checklist filed under #23173, on the 1st day of November, 2004.

Dale Keown, B.C.L.S.

This plan lies within the Fraser-Fort George Regional District.

KILBRIDE LAND SURVEYING LTD.
 British Columbia Land Surveyors
 Prince George, B.C.
 Ph: (250) 562-1196 Fax: 562-3656

F.B.- XJ 6 | D.L.- 932 Blk 4 | File No. - 040333