

REFERENCE PLAN OF EASEMENTS THROUGH  
 LOT 1, PLAN BCP\_15132\_ AND  
 REM. LOT 2, PLAN 30732  
 DISTRICT LOT 2099  
 CARIBOO DISTRICT

15133

PLAN No. BCP \_\_\_\_\_

DEPOSITED IN THE LAND TITLE OFFICE  
 AT NEW WESTMINSTER, B.C., THIS 20<sup>th</sup>  
 DAY OF December 2004

B.G.C.S. 93G.096

PURSUANT TO SECTION 99 OF THE LAND TITLE ACT.



SCALE: 1 : 1000

ALL DISTANCES SHOWN ARE IN METRES.

THIS PLAN SHOWS GROUND-LEVEL MEASURED DISTANCES.  
 PRIOR TO COMPUTATION OF U.T.M. COORDINATES, MULTIPLY  
 BY COMBINED FACTOR 0.9995073.

GRID BEARINGS ARE DERIVED FROM OBSERVATIONS  
 BETWEEN CONTROL MONUMENTS 86H1777, AND 86H1717.  
 INTEGRATED SURVEY AREA NUMBER 39, PRINCE GEORGE.

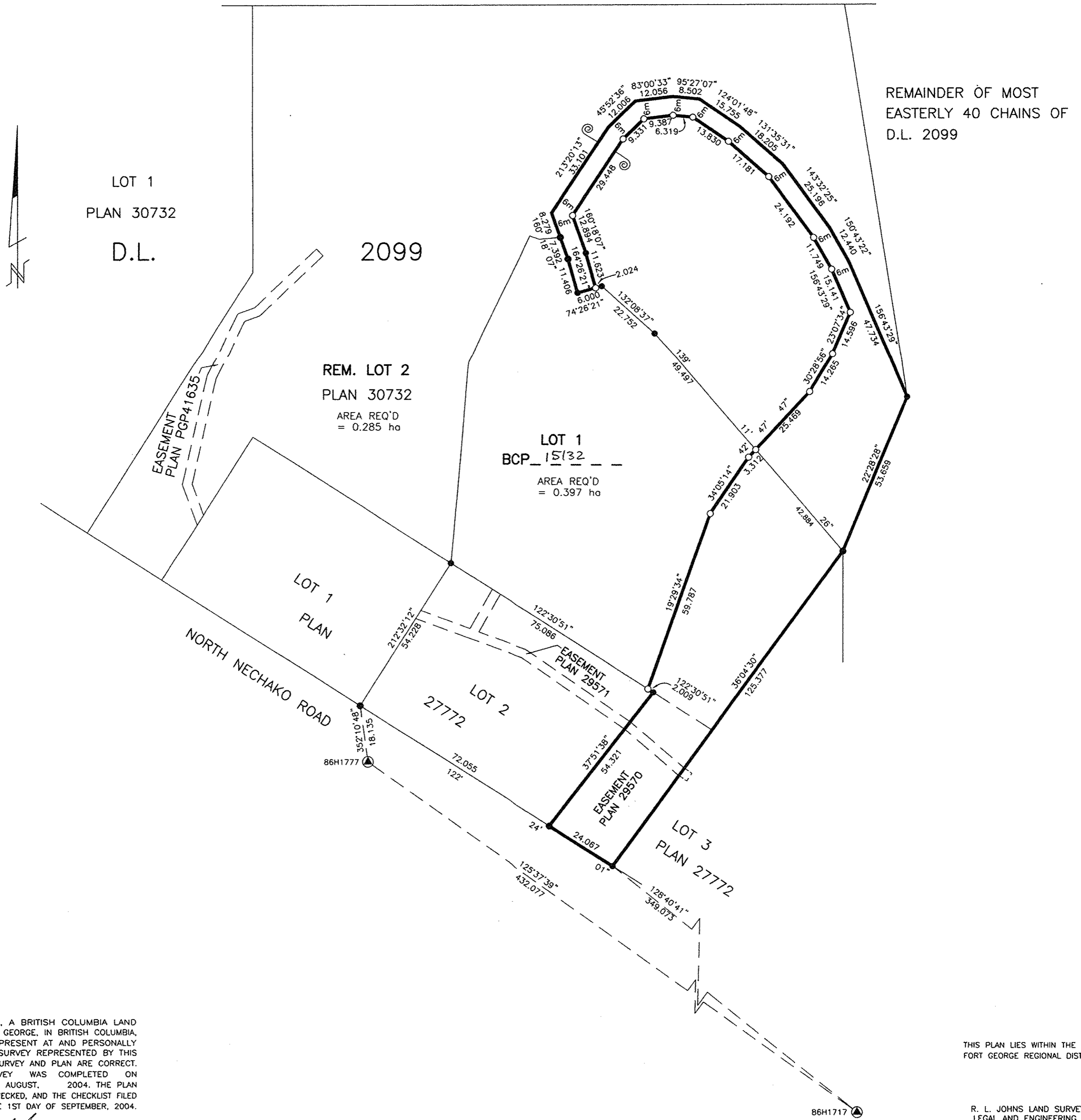
LEGEND

- STANDARD IRON POST FOUND
- STANDARD IRON POST PLACED
- ▲ CONTROL MONUMENT

D.L. 2098

BOOK OF REFERENCE	
DESCRIPTION	AREA
LOT 1, PLAN BCP_15132_, D.L. 2099	0.397 ha
REM. LOT 2, PLAN 30732, D.L. 2099	0.285 ha

REGISTRAR Bw 572776



I, RONALD L. JOHNS, A BRITISH COLUMBIA LAND SURVEYOR, OF PRINCE GEORGE, IN BRITISH COLUMBIA, CERTIFY THAT I WAS PRESENT AT AND PERSONALLY SUPERINTENDED THE SURVEY REPRESENTED BY THIS PLAN AND THAT THE SURVEY AND PLAN ARE CORRECT. THE FIELD SURVEY WAS COMPLETED ON THE 31ST DAY OF AUGUST, 2004. THE PLAN WAS COMPLETED AND CHECKED, AND THE CHECKLIST FILED UNDER #20404, ON THE 1ST DAY OF SEPTEMBER, 2004.

*R.L. Johns*  
 R.L. JOHNS, B.C.L.S., C.L.S.

THIS PLAN LIES WITHIN THE FRASER-FORT GEORGE REGIONAL DISTRICT.

R. L. JOHNS LAND SURVEYING LTD.  
 LEGAL AND ENGINEERING SURVEYS  
 240 VICTORIA STREET  
 PRINCE GEORGE, B. C. V2L 2J4  
 PHONE: (250)562-5759  
 FAX: (250)562-5703

90-66-E CC9-4-6