

EXPLANATORY PLAN OF  
EASEMENT OVER PART OF  
PARCEL A (PG3889),  
BLOCK 19, DISTRICT LOT 343,  
CARIBOO DISTRICT,  
PLAN 1268.

Pursuant to Section 99 of  
the Land Title Act.  
B.C.G.S. 93G.097

Scale: 1 : 500 (Distances are in metres)

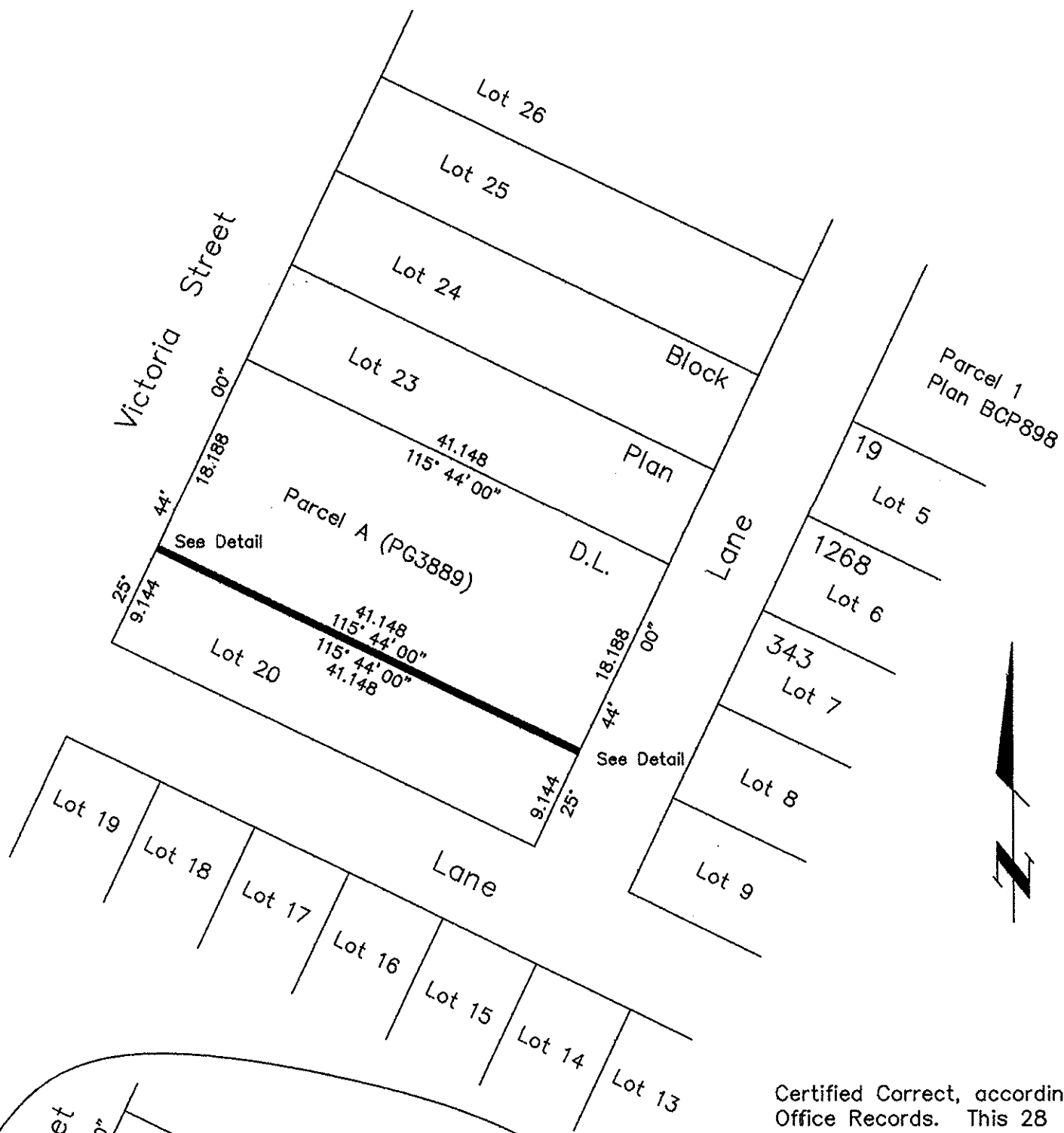


PLAN NO. BCP 15007

Deposited in the Land Title Office at New  
Westminster this 17 day of Dec 2004

REGISTRAR

Bw563877



Certified Correct, according to Land Title  
Office Records. This 28 day of  
October, 2004. The plan was  
completed and checked, and the checklist  
filed under #23050, on the 28 day  
of October, 2004.

*Gordon Kilbride*  
Gordon Kilbride, B.C.L.S.

This plan lies within the Fraser-Fort  
George Regional District.

<b>KILBRIDE LAND SURVEYING LTD.</b> British Columbia Land Surveyors Prince George, B.C. Ph: (250) 562-1196 Fax: 562-3656		
F.B.- /wy40	D.L.- 343(19)	File No. - 040312E

