

REFERENCE PLAN OF STATUTORY
RIGHT OF WAY WITHIN BLOCKS D AND F,
DISTRICT LOT 913,
CARIBOO DISTRICT.

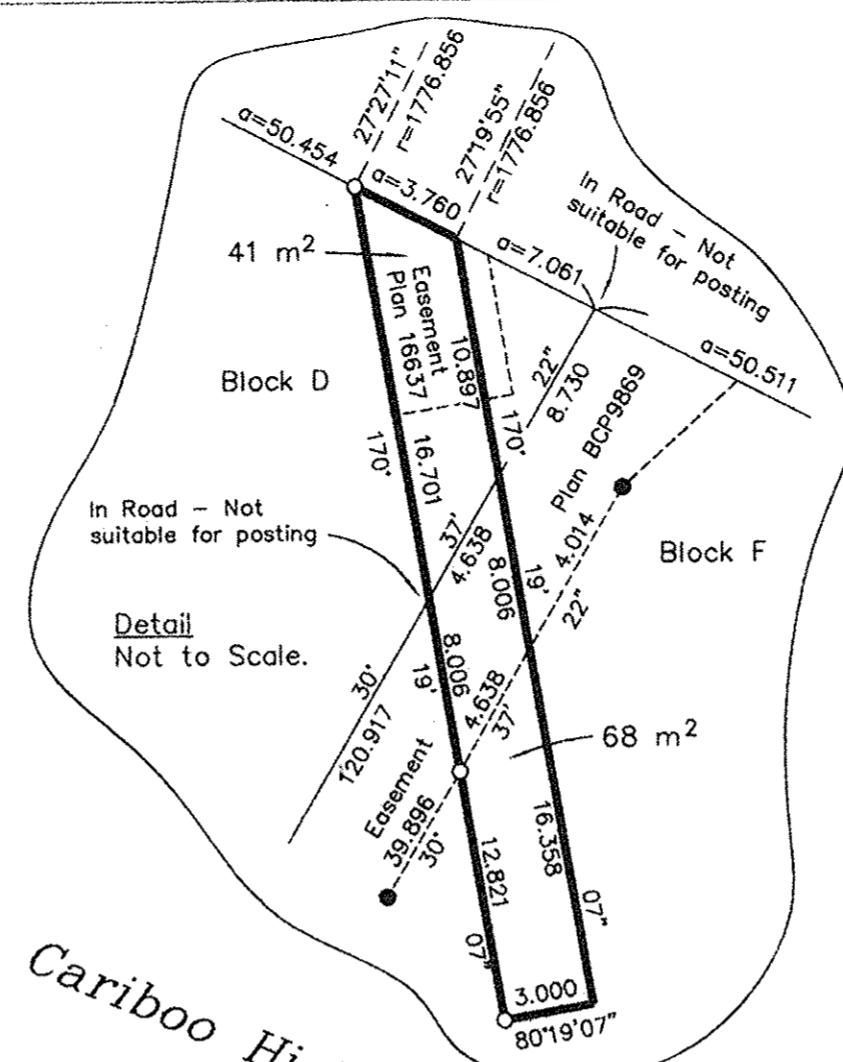
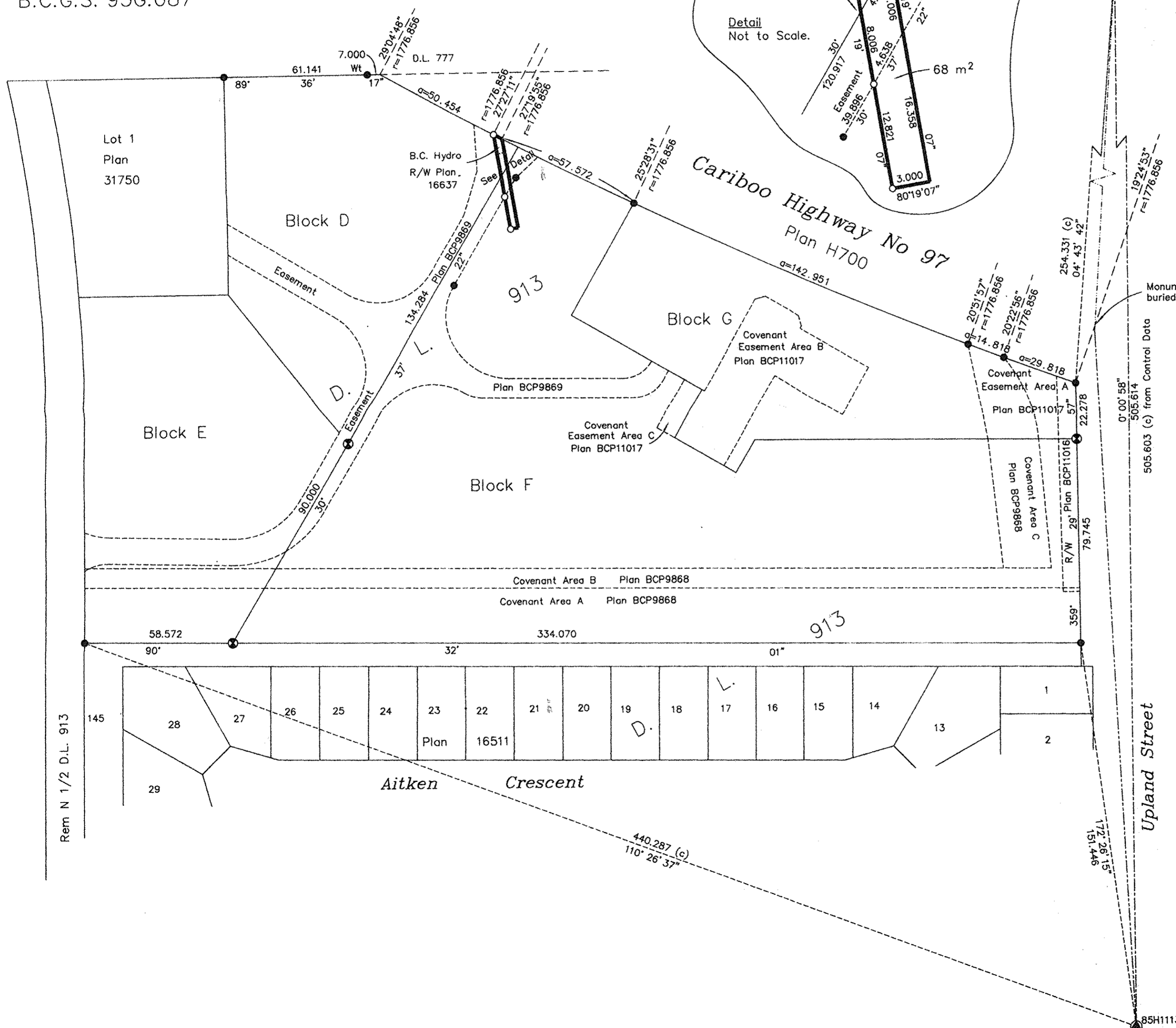
Pursuant to Section 113 of
the Land Title Act.

B.C.G.S. 93G.087

PLAN NO. BCP-14933-

Deposited in the Land Title Office at New
Westminster this 9 day of DEC. 2004.

REGISTRAR *BW557865*



Scale: 1 : 1250 (Distances are in metres)

Grid bearings are derived from observations between
control monuments 84H1113 and 85H1049 integrated
survey area number 39, City of Prince George, B.C.
NAD83(CSRS)

Note: This plan shows ground level measured
distances. Prior to computation of U.T.M.
co-ordinates multiply by the combined
factor 0.9995130

- LEGEND**
- Standard Capped Post Found
 - Standard Iron Post Found
 - Standard Iron Post Placed
 - ⊙ Control Monument Found

BOOK OF REFERENCE	
DESCRIPTION	AREA
Block D, D.L. 913, Cariboo District	41 m ²
Block F, D.L. 913, Cariboo District	68 m ²

I, Gordon Kilbride, a British Columbia Land Surveyor, of
Prince George, in British Columbia, certify that I was
present at and personally superintended the survey
represented by this plan, and that the survey and plan
are correct. The field survey was completed on the 3 day
of November, 2004. The plan was completed and
checked, and the checklist filed under # 24129, on the
22nd day of November, 2004.

Gordon Kilbride
Gordon Kilbride, B.C.L.S.

This plan lies within the Fraser-Fort
George Regional District.

KILBRIDE LAND SURVEYING LTD.
British Columbia Land Surveyors
Prince George, B.C.
Ph: (250) 562-1196 Fax: 562-3656

F.B.- XD 58	D.L.- 913	File No. -040340
-------------	-----------	------------------

Yellowhead Highway No. 16



Rem N 1/2 D.L. 913

Upland Street