

Deposited in the Land Title Office at New Westminister this 7 day of DEC. 2004.

REGISTRAR *BW553272*

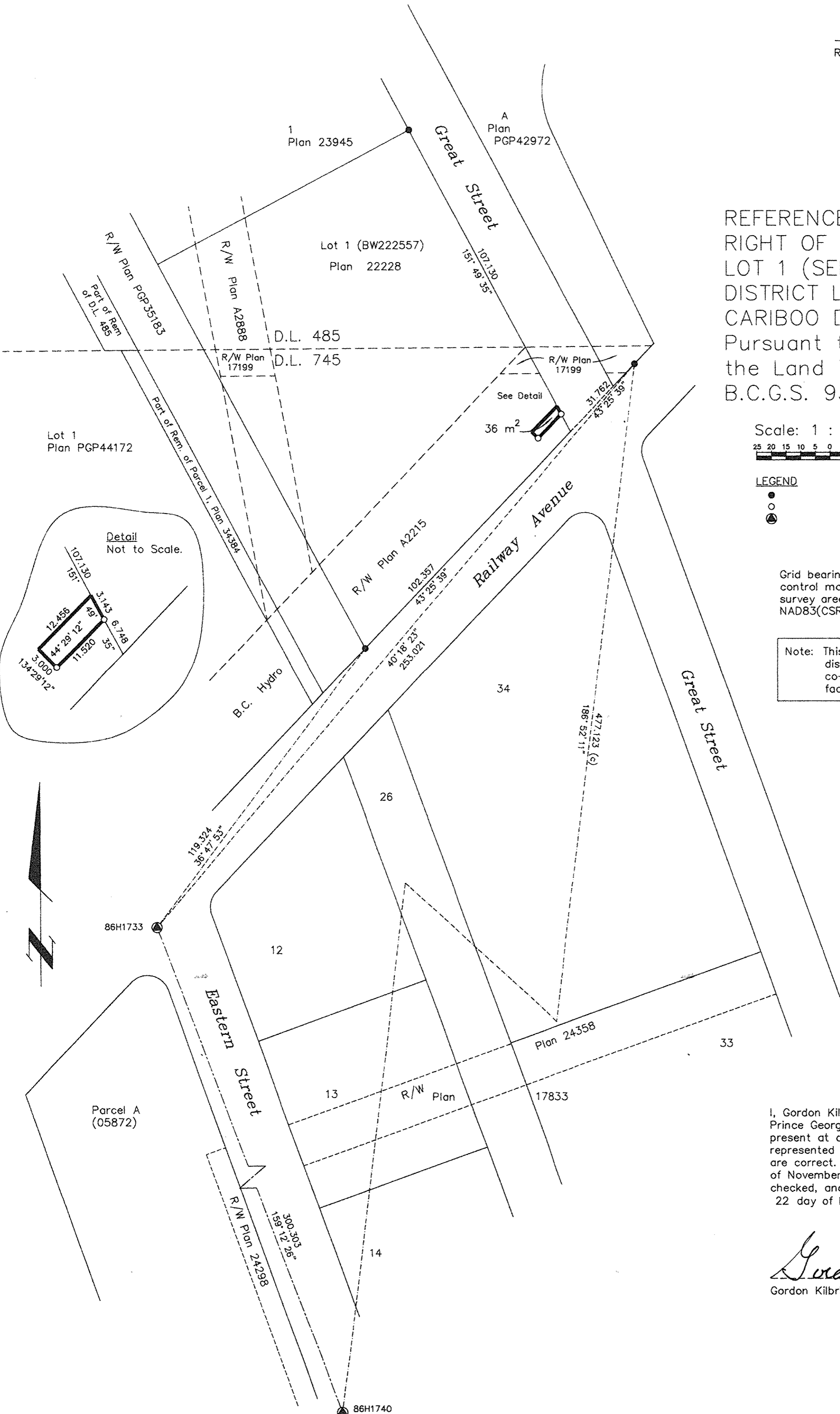
REFERENCE PLAN OF STATUTORY RIGHT OF WAY OVER PART OF LOT 1 (SEE BW222557), DISTRICT LOTS 485 AND 745, CARIBOO DISTRICT, PLAN 22228. Pursuant to Section 113 of the Land Title Act. B.C.G.S. 93G.087

Scale: 1 : 1000 (Distances are in metres)

LEGEND
● Standard Iron Post Found
○ Standard Iron Post Placed
⊙ Control Monument Found

Grid bearings are derived from observations between control monuments 86H1733 and 86H1740, integrated survey area number 39, City of Prince George, B.C. NAD83(CSRS)

Note: This plan shows ground level measured distances. Prior to computation of U.T.M. co-ordinates multiply by the combined factor 0.9995131



I, Gordon Kilbride, a British Columbia Land Surveyor, of Prince George, in British Columbia, certify that I was present at and personally supervised the survey represented by this plan, and that the survey and plan are correct. The field survey was completed on the 2 day of November, 2004. The plan was completed and checked, and the checklist filed under # 24128, on the 22 day of November, 2004.

Gordon Kilbride
Gordon Kilbride, B.C.L.S.

This plan lies within the Fraser-Fort George Regional District.

KILBRIDE LAND SURVEYING LTD. British Columbia Land Surveyors Prince George, B.C. Ph: (250) 562-1196 Fax: 562-3656		
F.B.- WX66	D.L.- 745	File No. - 040339