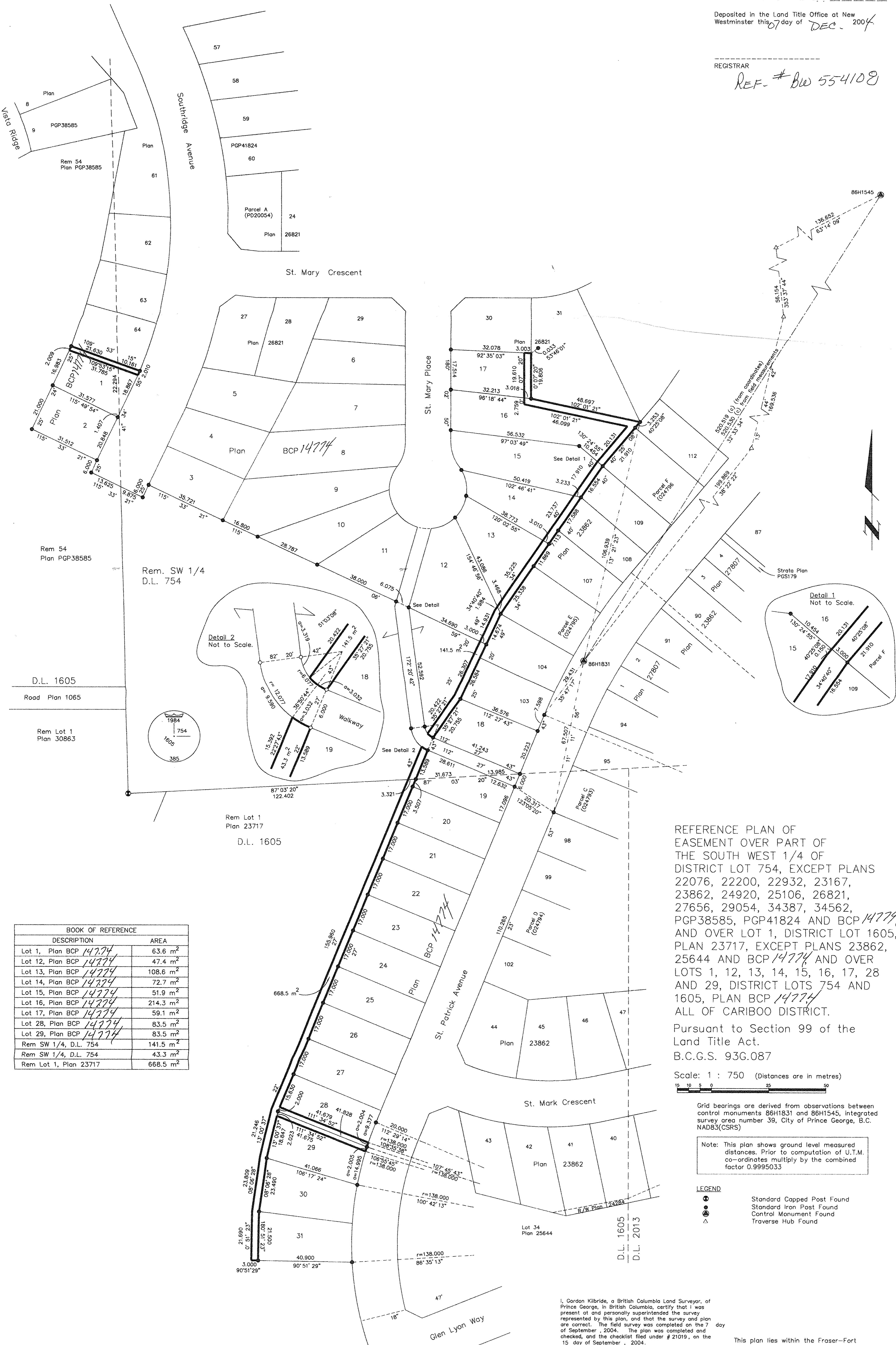


Deposited in the Land Title Office at New Westminster this 07 day of DEC. 2004

REGISTRAR

REF. # BW 554108



D.L. 1605
Road Plan 1065
Rem Lot 1
Plan 30863

Rem. SW 1/4
D.L. 754

Rem Lot 1
Plan 23717
D.L. 1605

BOOK OF REFERENCE	
DESCRIPTION	AREA
Lot 1, Plan BCP 14774	63.6 m ²
Lot 12, Plan BCP 14774	47.4 m ²
Lot 13, Plan BCP 14774	108.6 m ²
Lot 14, Plan BCP 14774	72.7 m ²
Lot 15, Plan BCP 14774	51.9 m ²
Lot 16, Plan BCP 14774	214.3 m ²
Lot 17, Plan BCP 14774	59.1 m ²
Lot 28, Plan BCP 14774	83.5 m ²
Lot 29, Plan BCP 14774	83.5 m ²
Rem SW 1/4, D.L. 754	141.5 m ²
Rem SW 1/4, D.L. 754	43.3 m ²
Rem Lot 1, Plan 23717	668.5 m ²

REFERENCE PLAN OF EASEMENT OVER PART OF THE SOUTH WEST 1/4 OF DISTRICT LOT 754, EXCEPT PLANS 22076, 22200, 22932, 23167, 23862, 24920, 25106, 26821, 27656, 29054, 34387, 34562, PGP38585, PGP41824 AND BCP 14774, AND OVER LOT 1, DISTRICT LOT 1605, PLAN 23717, EXCEPT PLANS 23862, 25644 AND BCP 14774 AND OVER LOTS 1, 12, 13, 14, 15, 16, 17, 28 AND 29, DISTRICT LOTS 754 AND 1605, PLAN BCP 14774 ALL OF CARIBOO DISTRICT.

Pursuant to Section 99 of the Land Title Act.
B.C.G.S. 93G.087

Scale: 1 : 750 (Distances are in metres)

Grid bearings are derived from observations between control monuments 86H1831 and 86H1545, integrated survey area number 39, City of Prince George, B.C. NAD83(CSRs)

Note: This plan shows ground level measured distances. Prior to computation of U.T.M. co-ordinates multiply by the combined factor 0.9995033

LEGEND
 ● Standard Capped Post Found
 ○ Standard Iron Post Found
 △ Control Monument Found
 ▽ Traverse Hub Found

I, Gordon Kilbride, a British Columbia Land Surveyor, of Prince George, in British Columbia, certify that I was present at and personally supervised the survey represented by this plan, and that the survey and plan are correct. The field survey was completed on the 7 day of September, 2004. The plan was completed and checked, and the checklist filed under # 21019, on the 15 day of September, 2004.

Gordon Kilbride
Gordon Kilbride, B.C.L.S.

This plan lies within the Fraser-Fort George Regional District.

KILBRIDE LAND SURVEYING LTD.
British Columbia Land Surveyors
Prince George, B.C.
Ph: (250) 562-1196 Fax: 562-3656
F.B.- XB25 D.L.- 1605\754 File No. - 040087R2