

REFERENCE PLAN OF EASEMENT
OVER PARCEL F(024796),
PLAN 23862, DISTRICT LOT 754
CARIBOO DISTRICT.

Pursuant to Section 99 of the
Land Title Act.

B.C.G.S. 93G.087

Scale: 1 : 750 (Distances are in metres)

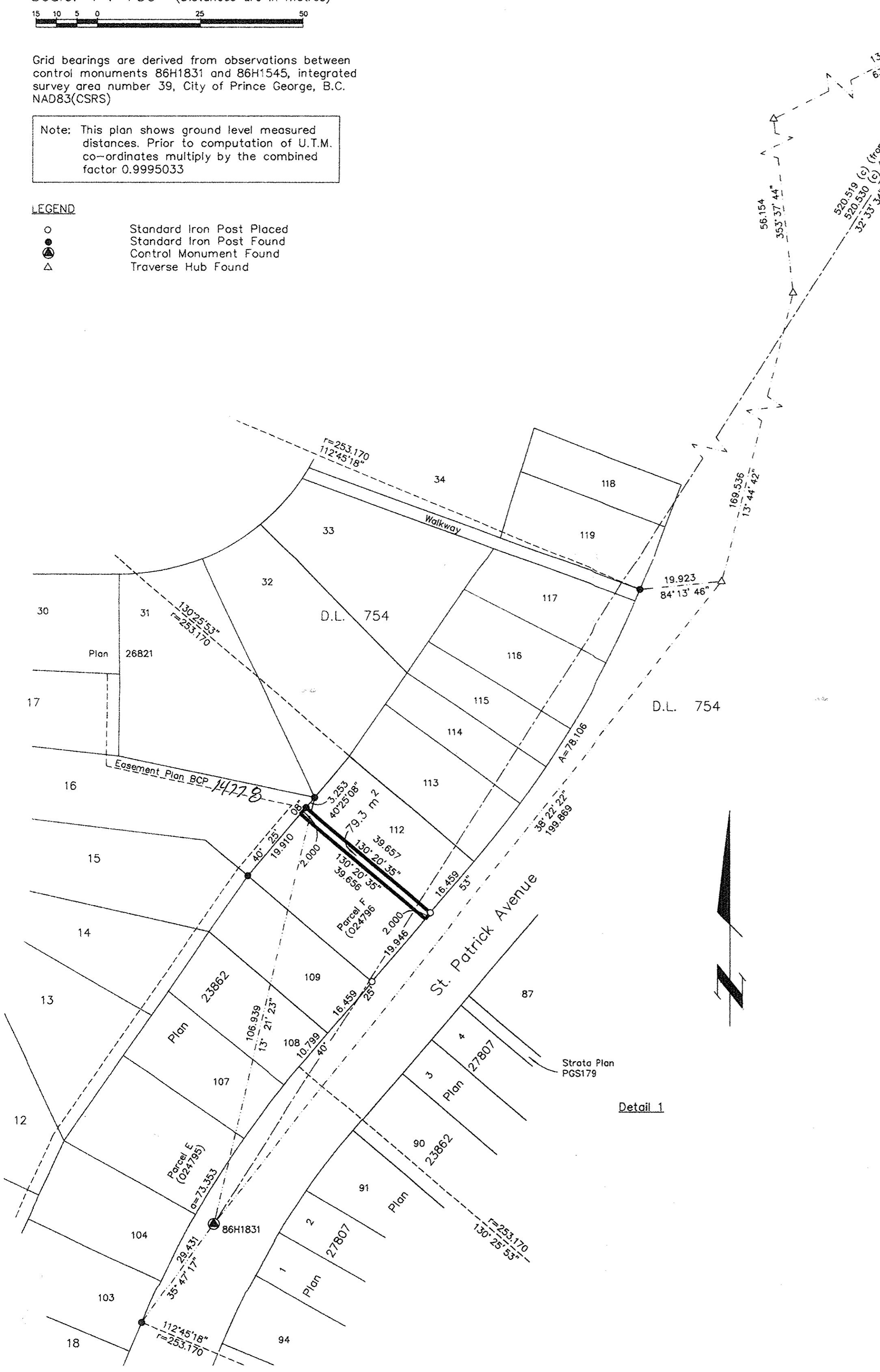


Grid bearings are derived from observations between
control monuments 86H1831 and 86H1545, integrated
survey area number 39, City of Prince George, B.C.
NAD83(CSRS)

Note: This plan shows ground level measured
distances. Prior to computation of U.T.M.
co-ordinates multiply by the combined
factor 0.9995033

LEGEND

- Standard Iron Post Placed
- Standard Iron Post Found
- ⊙ Control Monument Found
- △ Traverse Hub Found



PLAN NO. BCP 14777

Deposited in the Land Title Office at New
Westminster this 07 day of DEC 2004

REGISTRAR
REF. # BW 554101

I, Gordon Kilbride, a British Columbia Land Surveyor, of
Prince George, in British Columbia, certify that I was
present at and personally supervised the survey
represented by this plan, and that the survey and plan
are correct. The field survey was completed on the 7
day of September, 2004. The plan was completed and
checked, and the checklist filed under #21002, on the
15 day of September, 2004.

Gordon Kilbride
Gordon Kilbride, B.C.L.S.

This plan lies within the Fraser-Fort
George Regional District.

KILBRIDE LAND SURVEYING LTD. British Columbia Land Surveyors Prince George, B.C. Ph: (250) 562-1196 Fax: 562-3656		
F.B.- XB25	D.L.- 1605\754	File No. -040087R5