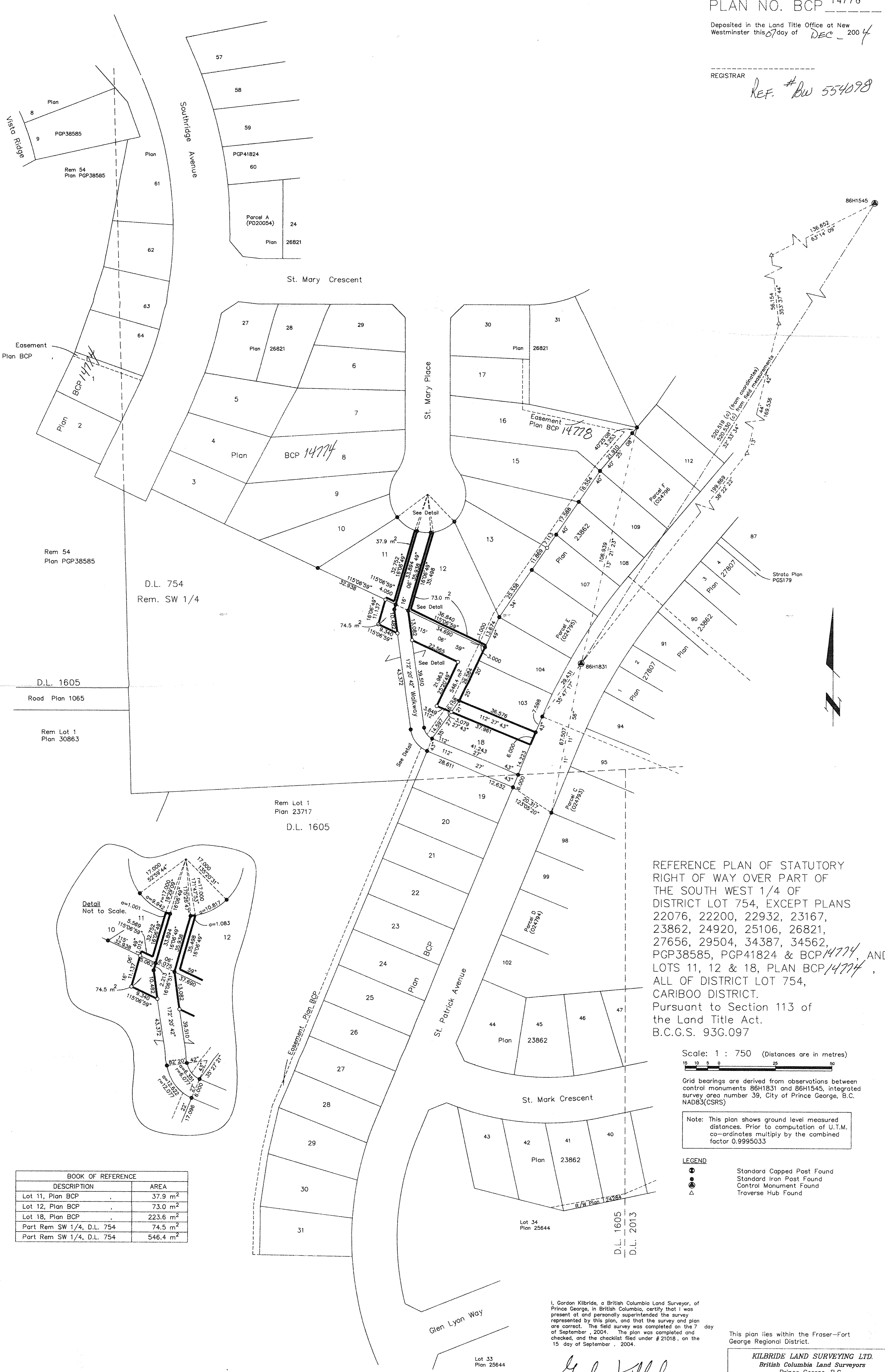


REGISTRAR

REF. # BW 554098



REFERENCE PLAN OF STATUTORY RIGHT OF WAY OVER PART OF THE SOUTH WEST 1/4 OF DISTRICT LOT 754, EXCEPT PLANS 22076, 22200, 22932, 23167, 23862, 24920, 25106, 26821, 27656, 29504, 34387, 34562, PGP38585, PGP41824 & BCP 14774, AND LOTS 11, 12 & 18, PLAN BCP 14774, ALL OF DISTRICT LOT 754, CARIBOO DISTRICT. Pursuant to Section 113 of the Land Title Act. B.C.G.S. 93G.097

Scale: 1 : 750 (Distances are in metres)

Grid bearings are derived from observations between control monuments 86H1831 and 86H1545, integrated survey area number 39, City of Prince George, B.C. NAD83(CSRS)

Note: This plan shows ground level measured distances. Prior to computation of U.T.M. co-ordinates multiply by the combined factor 0.9995033

LEGEND
 ● Standard Capped Post Found
 ○ Standard Iron Post Found
 △ Control Monument Found
 ▽ Traverse Hub Found

BOOK OF REFERENCE	
DESCRIPTION	AREA
Lot 11, Plan BCP	37.9 m ²
Lot 12, Plan BCP	73.0 m ²
Lot 18, Plan BCP	223.6 m ²
Part Rem SW 1/4, D.L. 754	74.5 m ²
Part Rem SW 1/4, D.L. 754	546.4 m ²

I, Gordon Kilbride, a British Columbia Land Surveyor, of Prince George, in British Columbia, certify that I was present at and personally superintended the survey represented by this plan, and that the survey and plan are correct. The field survey was completed on the 7 day of September, 2004. The plan was completed and checked, and the checklist filed under #21018, on the 15 day of September, 2004.

Gordon Kilbride
 Gordon Kilbride, B.C.L.S.

This plan lies within the Fraser-Fort George Regional District.

KILBRIDE LAND SURVEYING LTD.
 British Columbia Land Surveyors
 Prince George, B.C.
 Ph: (250) 562-1196 Fax: 562-3656