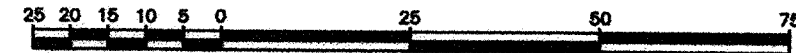


PLAN OF SUBDIVISION
OF PART OF PARCEL 1
PLAN PGP43052,
DISTRICT LOT 2508,
CARIBOO DISTRICT.

B.C.G.S. 93G.096

Scale: 1 : 1000 (Distances are in metres)



Grid bearings are derived from observations between control monuments 85H1206 and 85H1310 integrated survey area number 39, City of Prince George, B.C. NAD83(CSRS)

Note: This plan shows ground level measured distances. Prior to computation of U.T.M. co-ordinates multiply by the combined factor 0.99950925

LEGEND

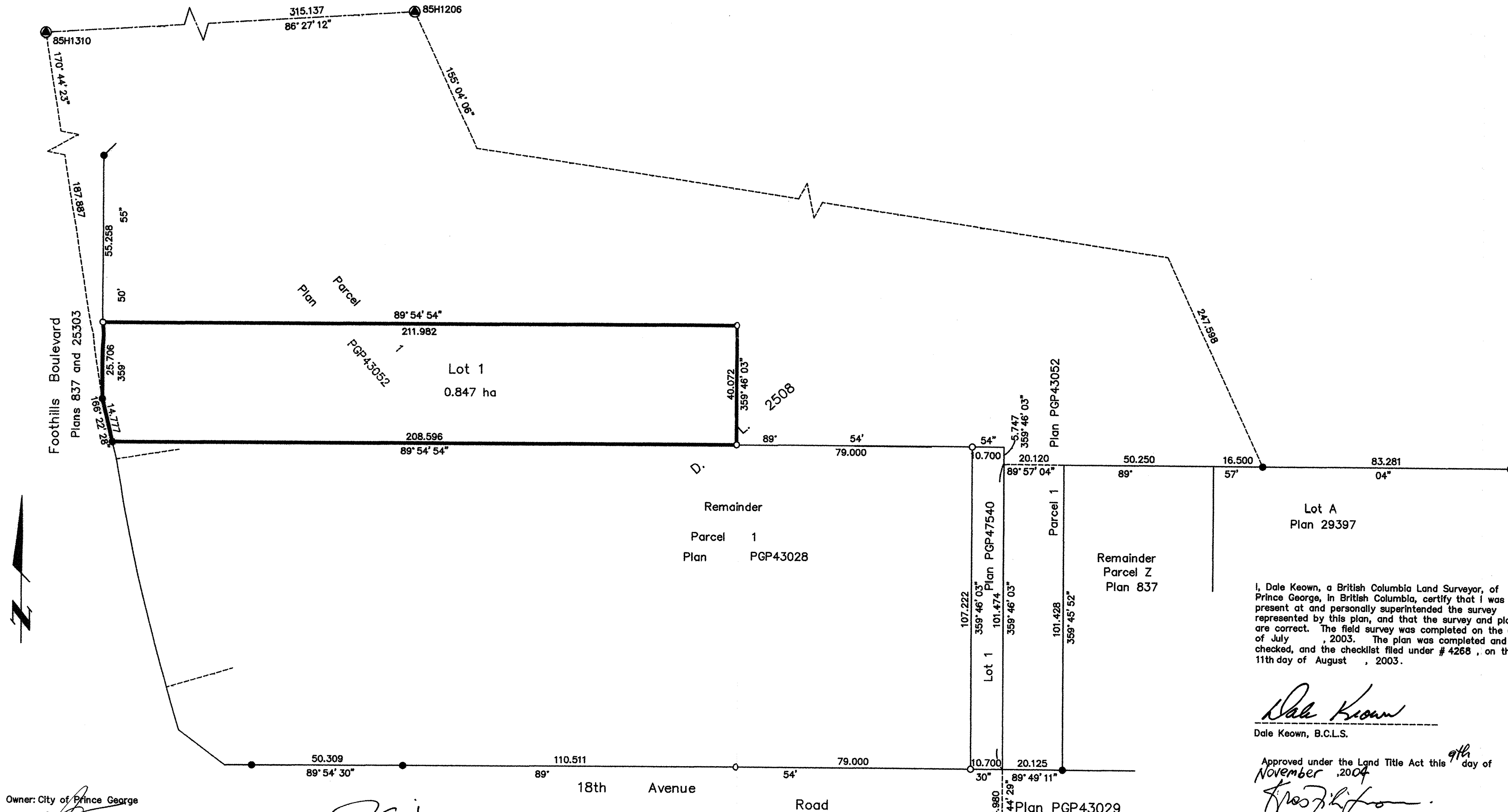
- Standard Iron Post Found
- Standard Iron Post Placed
- ⊙ Control Monument Found

PLAN NO. BCP 14702

Deposited in the Land Title Office at New Westminster this 2 day of Dec 2004.

REGISTRAR

BW 546 482



I, Dale Keown, a British Columbia Land Surveyor, of Prince George, in British Columbia, certify that I was present at and personally superintended the survey represented by this plan, and that the survey and plan are correct. The field survey was completed on the 6th day of July, 2003. The plan was completed and checked, and the checklist filed under # 4268, on the 11th day of August, 2003.

Dale Keown
Dale Keown, B.C.L.S.

Approved under the Land Title Act this 9th day of November, 2004

Don Schaffer
Approving Officer
City of Prince George

This plan lies within the Fraser-Fort George Regional District.

KILBRIDE LAND SURVEYING LTD. British Columbia Land Surveyors Prince George, B.C. Ph: (250) 562-1196 Fax: 562-3656		
F.B.- XE06	D.L.- 2508	File No. -030094

Owner: City of Prince George

Authorized Signatory

Print Name

Authorized Signatory

Print Name

Witness to both

Drenda Sieben
DRENDA SIEBEN

Print Name

1100 Patricia Blvd.

Address

Prince George, BC V2L3V9

Postal Code

Property Assistant

Occupation

Rem E 1/2
Lot 5
Block
Plan

Rem W 1/2
Lot

Rem E 1/2
4
9
837

Remainder
Parcel Z
Plan 837