

REFERENCE PLAN OF EASEMENT THROUGH
 LOTS 1 TO 22 INCLUSIVE AND LOTS 25 TO 30 INCLUSIVE
 AND LOTS 33 & 34, PLAN BCP 14136 -
 DISTRICT LOT 1599
 CARIBOO DISTRICT

PLAN No. BCP 14139

DEPOSITED IN THE LAND TITLE OFFICE
 AT NEW WESTMINSTER, B.C., THIS 29th
 DAY OF OCT 20 04

B.C.G.S. 93G.086
 PURSUANT TO SECTION 99 OF THE LAND TITLE ACT.

REGISTRAR
 Bw 499696



SCALE = 1 : 500
 ALL DISTANCES SHOWN ARE IN METRES.

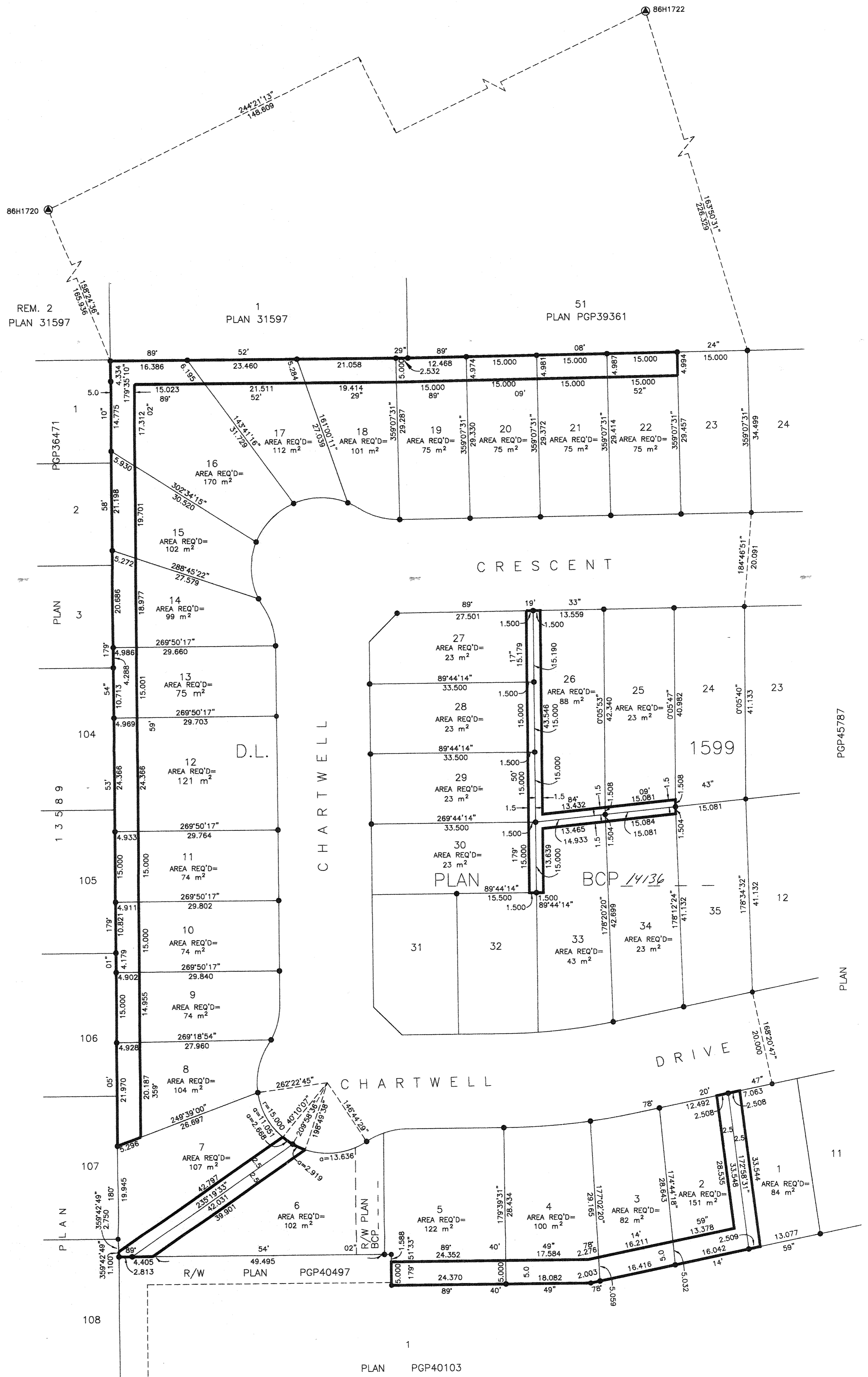
THIS PLAN SHOWS GROUND-LEVEL MEASURED DISTANCES.
 PRIOR TO COMPUTATION OF U.T.M. COORDINATES, MULTIPLY
 BY COMBINED FACTOR 0.9994885.

GRID BEARINGS ARE DERIVED FROM OBSERVATIONS
 BETWEEN CONTROL MONUMENTS 86H1720, AND 86H1722.
 INTEGRATED SURVEY AREA NUMBER 39, PRINCE GEORGE.

LEGEND

- STANDARD IRON POST FOUND
- ⊙ CONTROL MONUMENT

DESCRIPTION ALL WITHIN PLAN BCP 14136 - D.L. 1599, CARIBOO DISTRICT	P.I.D.	AREA REQ'D
LOT 1		84 m ²
LOT 2		151 m ²
LOT 3		82 m ²
LOT 4		100 m ²
LOT 5		122 m ²
LOT 6		102 m ²
LOT 7		107 m ²
LOT 8		104 m ²
LOT 9		74 m ²
LOT 10		74 m ²
LOT 11		74 m ²
LOT 12		121 m ²
LOT 13		75 m ²
LOT 14		99 m ²
LOT 15		102 m ²
LOT 16		170 m ²
LOT 17		112 m ²
LOT 18		101 m ²
LOT 19		75 m ²
LOT 20		75 m ²
LOT 21		75 m ²
LOT 22		75 m ²
LOT 25		23 m ²
LOT 26		88 m ²
LOT 27		23 m ²
LOT 28		23 m ²
LOT 29		23 m ²
LOT 30		23 m ²
LOT 33		43 m ²
LOT 34		23 m ²



I, RONALD L. JOHNS, A BRITISH COLUMBIA LAND SURVEYOR, OF PRINCE GEORGE, IN BRITISH COLUMBIA, CERTIFY THAT I WAS PRESENT AT AND PERSONALLY SUPERINTENDED THE SURVEY REPRESENTED BY THIS PLAN AND THAT THE SURVEY AND PLAN ARE CORRECT. THE FIELD SURVEY WAS COMPLETED ON THE 17TH DAY OF AUGUST, 2004. THE PLAN WAS COMPLETED AND CHECKED, AND THE CHECKLIST FILED UNDER #19840, ON THE 28TH DAY OF AUGUST, 2004.

R.L. Johns
 R.L. JOHNS, B.C.L.S., C.L.S.

THIS PLAN LIES WITHIN THE FRASER-FORT GEORGE REGIONAL DISTRICT.

R. L. JOHNS LAND SURVEYING LTD.
 LEGAL AND ENGINEERING SURVEYS
 240 VICTORIA STREET
 PRINCE GEORGE, B. C. V2L 2J4
 PHONE: (250)562-5759
 FAX: (250)562-5703
 2000008C CC8-4-11 & 22