

REFERENCE PLAN OF
EASEMENT THROUGH LOTS 1,
23, 24 & 35, PLAN BCP 14136
DISTRICT LOT 1599
CARIBOO DISTRICT

B.C.G.S. 93G.086
PURSUANT TO SECTION 99 OF THE LAND TITLE ACT.



SCALE = 1 : 500
ALL DISTANCES SHOWN ARE IN METRES.

THIS PLAN SHOWS GROUND-LEVEL MEASURED DISTANCES.
PRIOR TO COMPUTATION OF U.T.M. COORDINATES, MULTIPLY
BY COMBINED FACTOR 0.9994995.

GRID BEARINGS ARE DERIVED FROM OBSERVATIONS
BETWEEN CONTROL MONUMENTS 86H1720, AND 86H1722,
INTEGRATED SURVEY AREA NUMBER 39, PRINCE GEORGE.

LEGEND

- STANDARD IRON POST FOUND
- ⊙ CONTROL MONUMENT

BOOK OF REFERENCE

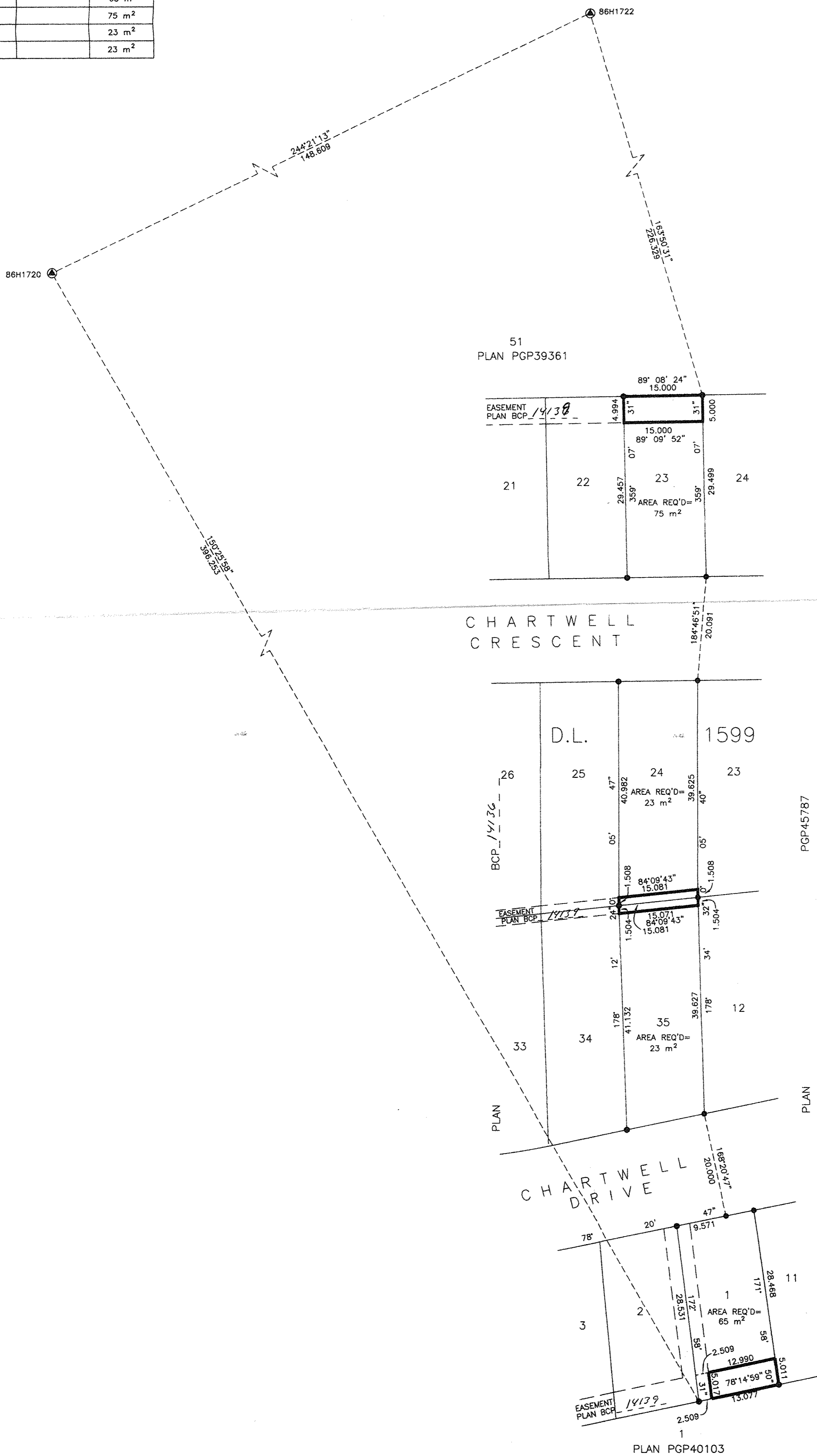
DESCRIPTION ALL WITHIN PLAN BCP 14136 D.L. 1599, CARIBOO DISTRICT	P.L.D.	AREA REQ'D
LOT 1		65 m ²
LOT 23		75 m ²
LOT 24		23 m ²
LOT 35		23 m ²

PLAN No. BCP 14138

DEPOSITED IN THE LAND TITLE OFFICE
AT NEW WESTMINSTER, B.C., THIS 29
DAY OF OCT. 20 04.

REGISTRAR

BW499690



I, RONALD L. JOHNS, A BRITISH COLUMBIA LAND
SURVEYOR, OF PRINCE GEORGE, IN BRITISH COLUMBIA,
CERTIFY THAT I WAS PRESENT AT AND PERSONALLY
SUPERINTENDED THE SURVEY REPRESENTED BY THIS
PLAN AND THAT THE SURVEY AND PLAN ARE CORRECT.
THE FIELD SURVEY WAS COMPLETED ON
THE 17TH DAY OF AUGUST, 2004. THE PLAN
WAS COMPLETED AND CHECKED, AND THE CHECKLIST FILED
UNDER #21131, ON THE 17TH DAY OF SEPTEMBER, 2004.

R.L. Johns
R.L. JOHNS, B.C.L.S., C.L.S.

THIS PLAN LIES WITHIN THE FRASER-
FORT GEORGE REGIONAL DISTRICT.

R. L. JOHNS LAND SURVEYING LTD.
LEGAL AND ENGINEERING SURVEYS
240 VICTORIA STREET
PRINCE GEORGE, B.C. V2L 2J4
PHONE: (250)562-5759
FAX: (250)562-5703
2000008F CC8-4-11 & 22