

REFERENCE PLAN OF STATUTORY RIGHT-OF-WAY
 THROUGH LOT 6, PLAN BCP 14136
 DISTRICT LOT 1599
 CARIBOO DISTRICT

B.C.G.S. 93G.086

PURSUANT TO SECTION 113 OF THE LAND TITLE ACT.

PLAN No. BCP 14137

DEPOSITED IN THE LAND TITLE OFFICE
 AT NEW WESTMINSTER, B.C., THIS 29
 DAY OF OCT 20 04

REGISTRAR

BW 499688



SCALE = 1 : 500

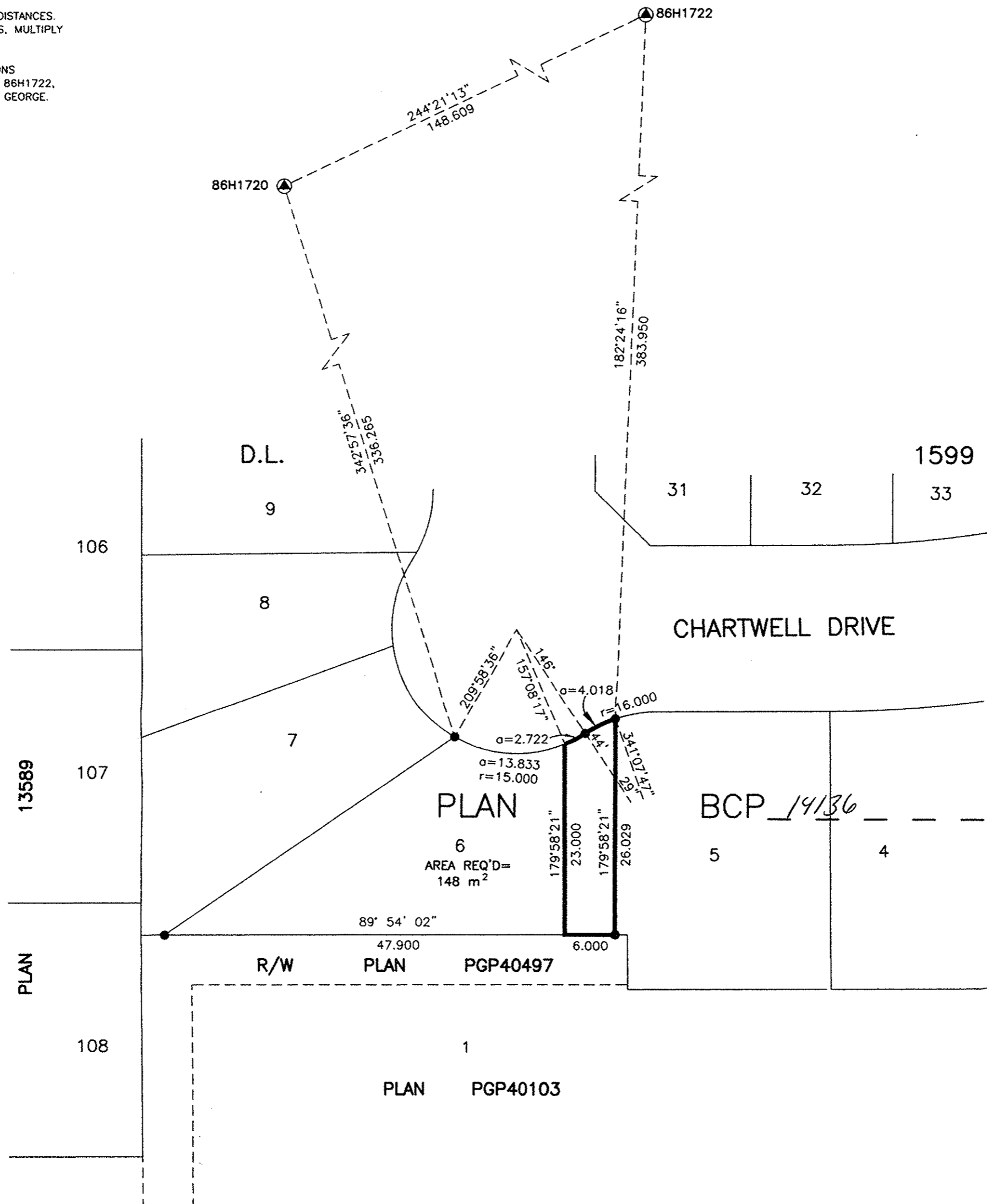
ALL DISTANCES SHOWN ARE IN METRES.

THIS PLAN SHOWS GROUND-LEVEL MEASURED DISTANCES.
 PRIOR TO COMPUTATION OF U.T.M. COORDINATES, MULTIPLY
 BY COMBINED FACTOR 0.9994885.

GRID BEARINGS ARE DERIVED FROM OBSERVATIONS
 BETWEEN CONTROL MONUMENTS 86H1720, AND 86H1722,
 INTEGRATED SURVEY AREA NUMBER 39, PRINCE GEORGE.

LEGEND

- STANDARD IRON POST FOUND
- ▲ CONTROL MONUMENT



I, RONALD L. JOHNS, A BRITISH COLUMBIA LAND
 SURVEYOR, OF PRINCE GEORGE, IN BRITISH COLUMBIA,
 CERTIFY THAT I WAS PRESENT AT AND PERSONALLY
 SUPERINTENDED THE SURVEY REPRESENTED BY THIS
 PLAN AND THAT THE SURVEY AND PLAN ARE CORRECT.
 THE FIELD SURVEY WAS COMPLETED ON
 THE 17TH DAY OF AUGUST, 2004. THE PLAN
 WAS COMPLETED AND CHECKED, AND THE CHECKLIST FILED
 UNDER #19832, ON THE 20TH DAY OF AUGUST, 2004.

R.L. Johns
 R.L. JOHNS, B.C.L.S., C.L.S.

THIS PLAN LIES WITHIN THE FRASER-
 FORT GEORGE REGIONAL DISTRICT.

R. L. JOHNS LAND SURVEYING LTD.
 LEGAL AND ENGINEERING SURVEYS
 240 VICTORIA STREET
 PRINCE GEORGE, B. C. V2L 2J4
 PHONE: (250)562-5759
 FAX: (250)562-5703
 2000008E CCB-4-11 & 22