

PLAN OF SUBDIVISION OF
REM. LOT 1, PLAN 14340
DISTRICT LOT 1599
CARIBOO DISTRICT

PLAN No. BCP 14136

DEPOSITED IN THE LAND TITLE OFFICE
AT NEW WESTMINSTER, B.C., THIS 29
DAY OF OCT 20 04.

B.C.G.S. 93G.086



SCALE = 1 : 500
ALL DISTANCES SHOWN ARE IN METRES.

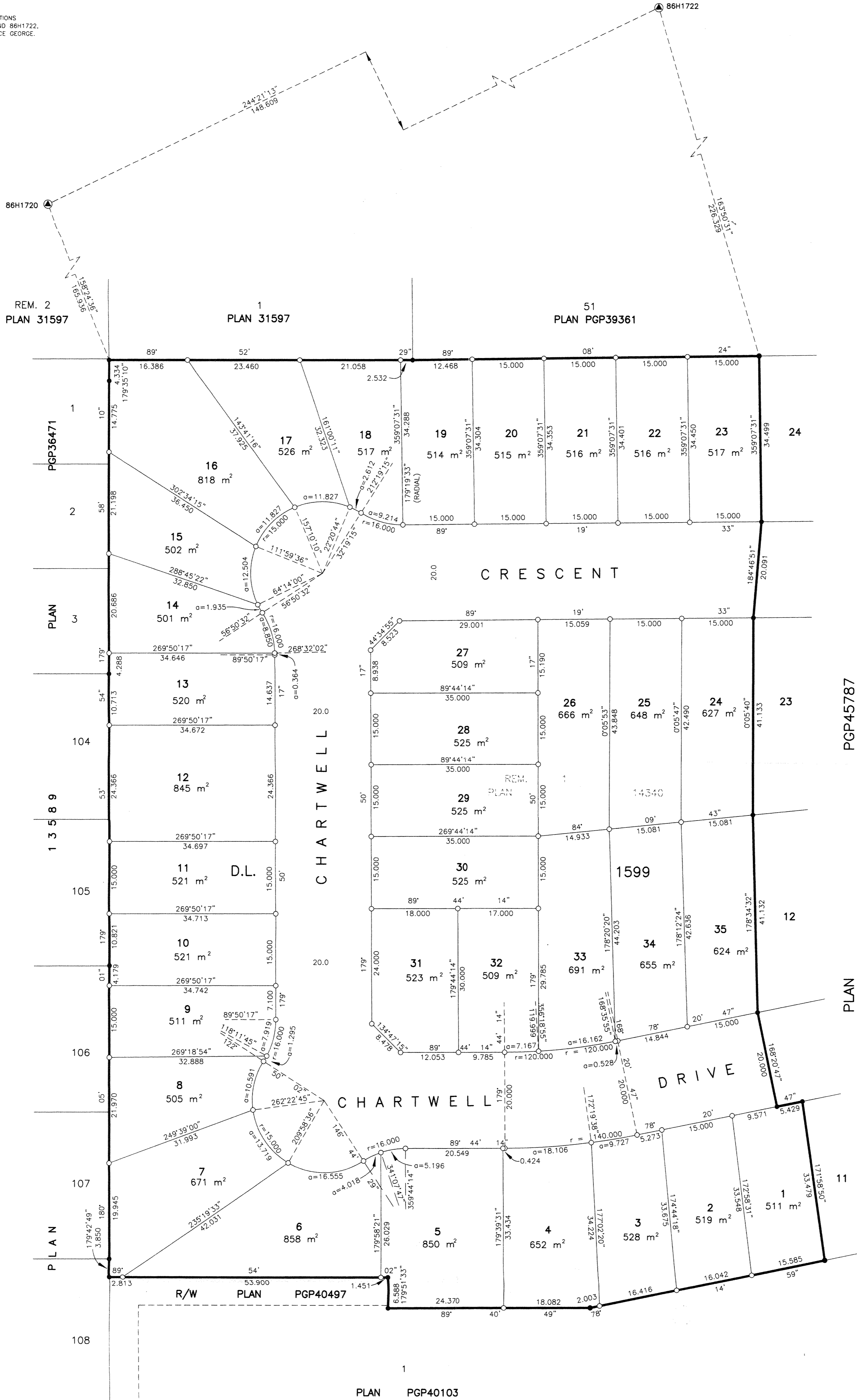
THIS PLAN SHOWS GROUND-LEVEL MEASURED DISTANCES.
PRIOR TO COMPUTATION OF U.T.M. COORDINATES, MULTIPLY
BY COMBINED FACTOR 0.9994885.
GRID BEARINGS ARE DERIVED FROM OBSERVATIONS
BETWEEN CONTROL MONUMENTS 86H1720, AND 86H1722,
INTEGRATED SURVEY AREA NUMBER 39, PRINCE GEORGE.

LEGEND

- STANDARD IRON POST FOUND
- STANDARD IRON POST PLACED
- ▲ CONTROL MONUMENT

REGISTRAR

BW499653-687



BELCO DEVELOPMENTS LTD.
AUTHORIZED SIGNATORY
ERIC TRIGG
PRINT NAME
ERIC TRIGG
AUTHOGRAPH SIGNATURE
PRINT NAME

WITNESS (AS TO SIGNATURE)
Darlene Sidenberg
PRINT NAME
DARLENE SIDENBERG
ADDRESS
7929 - 120th Street
Delta, B.C., V4C 6P6
Legal Assistant
OCCUPATION

APPROVED UNDER THE LAND TITLE ACT
THIS 15 DAY OF October 20 04

Al Bell
APPROVING OFFICER, CITY OF PRINCE GEORGE.

I, RONALD L. JOHNS, A BRITISH COLUMBIA LAND SURVEYOR, OF PRINCE GEORGE, IN BRITISH COLUMBIA, CERTIFY THAT I WAS PRESENT AT AND PERSONALLY SUPERINTENDED THE SURVEY REPRESENTED BY THIS PLAN AND THAT THE SURVEY AND PLAN ARE CORRECT. THE FIELD SURVEY WAS COMPLETED ON THE 17TH DAY OF AUGUST, 2004. THE PLAN WAS COMPLETED AND CHECKED, AND THE CHECKLIST FILED UNDER # 19794, ON THE 19TH DAY OF AUGUST, 2004.

R.L. Johns
R.L. JOHNS, B.C.L.S., C.L.S.

THIS PLAN LIES WITHIN THE FRASER-FORT GEORGE REGIONAL DISTRICT.

R. L. JOHNS LAND SURVEYING LTD.
LEGAL AND ENGINEERING SURVEYS
240 VICTORIA STREET
PRINCE GEORGE, B. C. V2L 2J4
PHONE: (250) 562-5759
FAX: (250) 562-5703