

POSTING PLAN OF PARTS OF  
BLOCKS 43, 44, 45, 46, 131,  
132, 133 & 134, PLAN 1268  
DISTRICT LOT 343  
CARIBOO DISTRICT

PLAN No. BCP 13793

DEPOSITED IN THE LAND TITLE OFFICE  
AT NEW WESTMINSTER, B.C. THIS  
DAY OF \_\_\_\_\_ 20\_\_

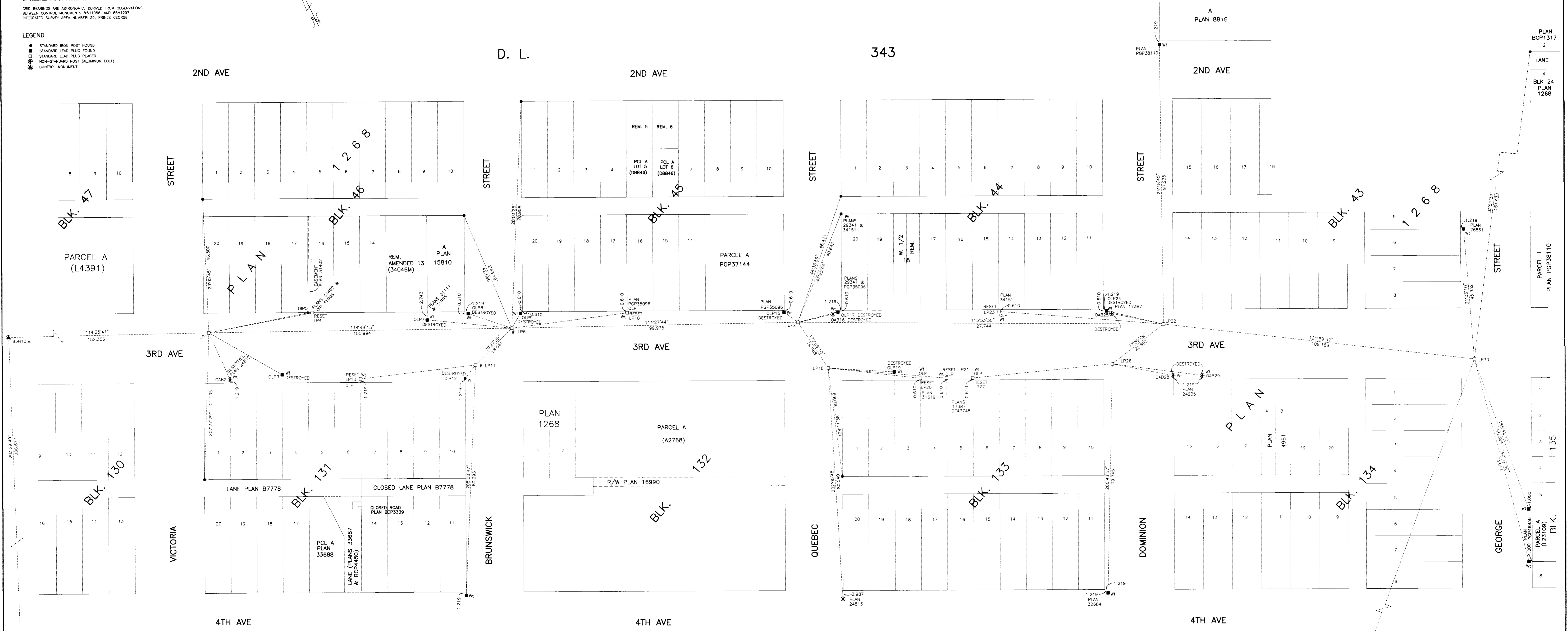
B.C.G.S. 93G.097  
PURSUANT TO SECTION 68 OF THE LAND TITLE ACT.



SCALE = 1 : 500  
ALL DISTANCES SHOWN ARE IN METRES.

THIS PLAN SHOWS GROUND-LEVEL MEASURED DISTANCES  
PRIOR TO COMPLETION OF L.T.A. COORDINATES, MEASURED  
BY COMBINED FACTOR 0.9995143.  
GRID BOUNDARIES ARE ASTROGNOMIC, DERIVED FROM OBSERVATIONS  
BETWEEN CONTROL MONUMENTS 85H1056, AND 85H1297,  
INTEGRATED SURVEY AREA NUMBER 39, PRINCE GEORGE.

- LEGEND
- STANDARD IRON POST FOUND
  - STANDARD LEAD PLUG FOUND
  - STANDARD LEAD PLUG PLACED
  - NON-STANDARD POST (ALUMINUM BOLT)
  - ▲ CONTROL MONUMENT



FROM:	TO:	AZIMUTH	DISTANCE
LP1	DAB2	181°20'09"	17.856
LP1	OLP3	145°23'05"	29.529
LP1	LP4	104°41'09"	36.866
LP1	OP5	104°14'33"	35.386

FROM:	TO:	AZIMUTH	DISTANCE
LP6	OLP7	301°14'56"	29.680
LP6	OLP8	314°08'28"	16.026
LP6	OLP9	54°01'52"	5.299
LP6	LP10	108°05'54"	40.544

FROM:	TO:	AZIMUTH	DISTANCE
LP11	OP12	243°26'07"	5.907
LP11	LP13	288°48'25"	40.482

FROM:	TO:	AZIMUTH	DISTANCE
LP14	OLP15	331°08'00"	6.011
LP14	DAB16	101°56'26"	12.816
LP14	OLP17	107°17'29"	14.453

FROM:	TO:	AZIMUTH	DISTANCE
LP18	OLP19	118°53'54"	23.106
LP18	LP20	121°51'11"	32.383
LP18	LP21	122°26'11"	41.488

FROM:	TO:	AZIMUTH	DISTANCE
LP22	LP23	289°58'38"	57.854
LP22	OLP24	308°29'00"	20.411
LP22	DAB25	307°06'33"	18.433

FROM:	TO:	AZIMUTH	DISTANCE
LP26	LP27	289°52'18"	49.016
LP26	OLP28	128°1'55"	21.678
LP26	OLP29	132°54'15"	31.712

I, RONALD L. JOHNS, A BRITISH COLUMBIA LAND SURVEYOR OF PRINCE GEORGE, IN BRITISH COLUMBIA, CERTIFY THAT I WAS PRESENT AT AND PERSONALLY SUPERINTENDED BY THE SURVEY REPRESENTED BY THIS PLAN AND THAT THE SURVEY AND PLAN ARE CORRECT. THE FIELD SURVEY WAS COMPLETED ON THE 20TH DAY OF JANUARY, 2004. THE PLAN WAS COMPLETED AND CHECKED, AND THE CHECKS FILED UNDER # 21090, ON THE 18TH DAY OF SEPTEMBER, 2004.

R.L. JOHNS, C.L.S.

THIS PLAN LIES WITHIN THE FRASER-FORT GEORGE REGIONAL DISTRICT.

R. L. JOHNS LAND SURVEYING LTD.  
LEAS AND ENGINEERING SURVEYS  
242 VICTORIA STREET  
PRINCE GEORGE, B.C. V0P 2S4  
PHONE: (250) 662-3788  
FAX: (250) 662-3783  
2003020 F99-11-21