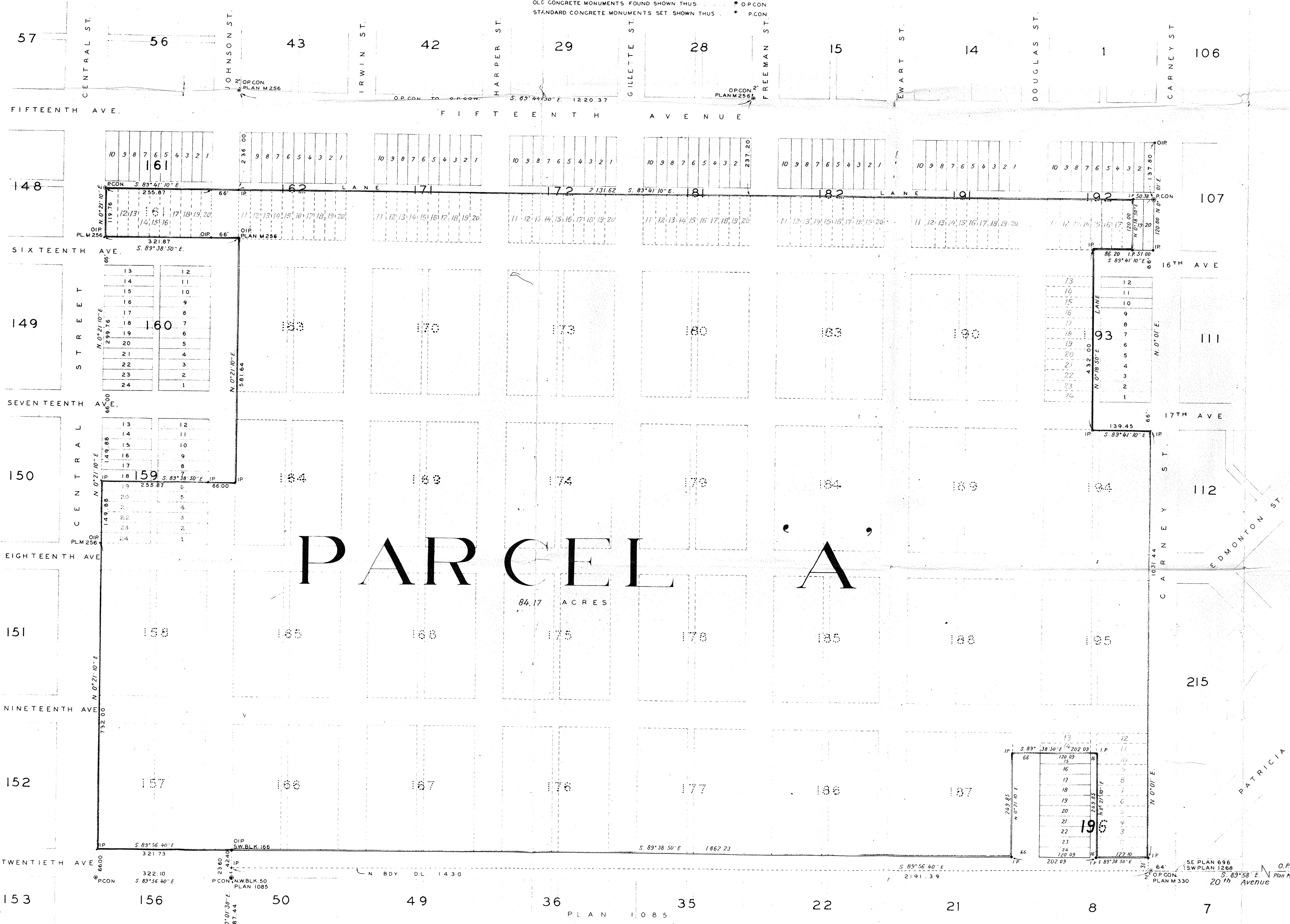


PLAN OF SUBDIVISION OF BLOCKS 157 · 158 · 163 TO 170 · 173 TO 180 · 183 TO 190 · 194 TO 195
 AND PARTS OF BLOCKS 159 · 161 · 162 · 171 · 172 · 181 · 182 · 191 · 192 · 193 AND 196 · PLAN 696
 INCLUDING ROADS AND LANES CONTAINED THEREIN
 DISTRICT LOT 936 G.I. CARIBOO DISTRICT

PLAN No 9856
 DEPOSITED IN THE LAND REGISTRY OFFICE
 AT KAMLOOPS THIS 28th DAY OF JULY 1959
W. Whyte
 SURVEYOR

SCALE: 1 IN. = 100 FT.

LEGEND: BEARINGS ARE ASTRONOMIC AND WERE DERIVED FROM
 OLD CONCRETE MONUMENTS ON CENTRE LINE OF 20th AVENUE AS SHOWN
 AS S 83° 58' E ON PLAN M 330
 OLD IRON POSTS FOUND SHOWN THUS · OIP
 IRON POSTS SET SHOWN THUS · IP
 OLD CONCRETE MONUMENTS FOUND SHOWN THUS · O.P.CON
 STANDARD CONCRETE MONUMENTS SET SHOWN THUS · P.CON



PARCEL A
 84.17 ACRES

I, R.J. GOBLE OF THE CITY OF PRINCE GEORGE, BRITISH COLUMBIA LAND SURVEYOR MAKE OATH AND SAY THAT I WAS PRESENT AT AND DID PERSONALLY SUPERINTEND THE SURVEY REPRESENTED BY THIS PLAN AND THAT THE SURVEY AND PLAN ARE CORRECT. THE SAID SURVEY WAS COMPLETED ON THE 1st DAY OF MAY 1958.

R.J. Goble
 B.C.L.S.

SWORN BEFORE ME AT THE CITY OF PRINCE GEORGE THIS 2nd DAY OF MAY 1958
W. Whyte
 A COMMISSIONER FOR TAKING AFFIDAVITS WITHIN BRITISH COLUMBIA.

Inspected this 18th day of March 1959.
R. Whyte
 B.C.L.S.

Reapproved under the Land Registry Act on the 19th day of March 1959.

R. Whyte
 B.C.L.S.

APPROVED UNDER THE LAND REGISTRY ACT ON THE 2nd DAY OF MAY 1959
W. Whyte
 APPROVING OFFICER, CITY OF PRINCE GEORGE, B.C.

McWilliam - Whyte - Serle & Goble
 British Columbia Land Surveyors

REF. No 58019 - A