

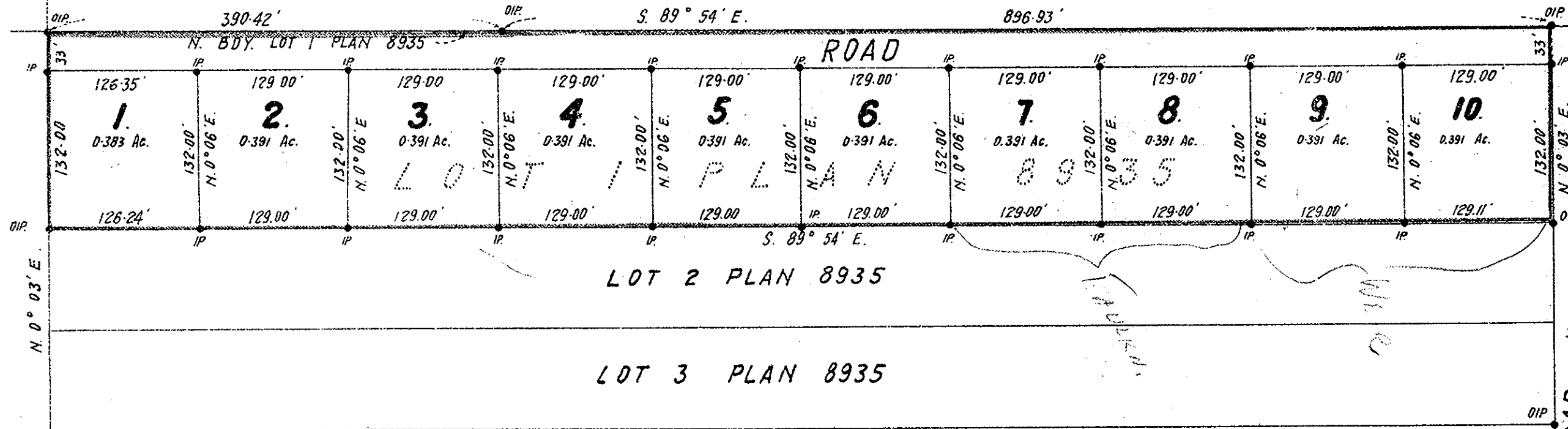
# PLAN OF SUBDIVISION OF LOT 1 PLAN 8935 DISTRICT LOT 2424 CARIBOO DISTRICT.

Scale: 1" = 100'  
Bearings are Astronomic and derived from the North Boundary of Lot 1, Plan 8935 as S. 89° 54' E.  
Old Iron Pins Found shown... • OIP.  
New Iron Pins Set shown... • IP.

Plan No. 9705  
Deposited in the Land Registry Office at Kamloops this 2nd day of JUNE, 1959.

*[Signature]*  
Registrar.

N.E. 1/4 OF S.E. 1/4 D.L. 2424 Plan 9563



JOHN HART HIGHWAY PLAN H 226

*Archie Weir*  
*opposite Elsa F. Weir*  
Owner.

Approved Under the Land Registry Act.  
this 10<sup>th</sup> day of MARCH, 1959.

*[Signature]*  
Approving Officer Dept. of Highways, Victoria.

*[Signature]*  
as to both signatures witness.

I, R. J. Gable of the City of Prince George British Columbia Land Surveyor make oath and say that I was present at and did personally superintend the survey represented by this plan and that the survey and plan are correct. The said survey was completed on the 10th day of December, 1958.

*[Signature]*  
B.C.L.S.

Sworn before me at the City of Prince George this 10th day of December 1958.

*[Signature]*  
A Commissioner for taking Affidavits within British Columbia.  
58731  
Ref No 58121