

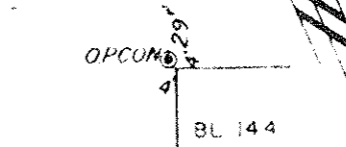
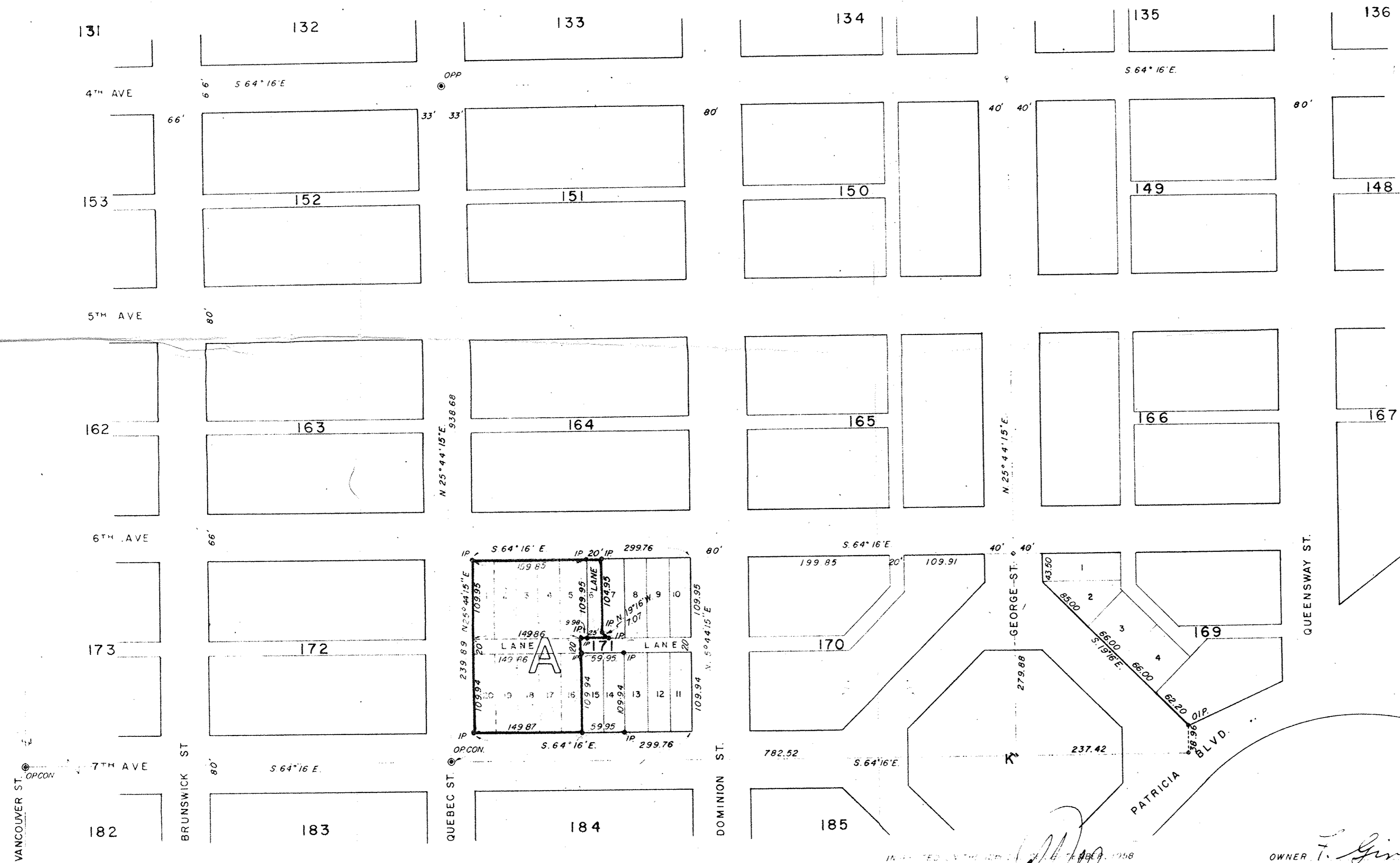
PLAN OF SUBDIVISION OF LOTS 1 TO 6; 16 TO 20 AND PART OF LOT 7, BLOCK 171, PLAN 1268,
DISTRICT LOT 343 CARIBOO DISTRICT

SCALE: 1 IN = 100 FT

LEGEND BEARINGS ARE ASTRONOMIC AND ARE DERIVED FROM OLD CONCRETE MONUMENTS ON THE CENTER LINE OF 4TH AVE AS N. 64° 16' W AS SHOWN ON PLAN M 330.
 OLD CONCRETE MONUMENTS FOUND SHOWN THUS ○ OP CON.
 OLD STANDARD PIPE POSTS FOUND SHOWN THUS ● OP P.
 OLD IRON POSTS FOUND SHOWN THUS ○ IP
 IRON POSTS SET SHOWN THUS ○ IP

PLAN NO 9667
 DEPOSITED IN THE LAND REGISTRY OFFICE
 AT KAMLOOPS THIS 13TH DAY OF MAY 1959

[Signature]



[Signature]
[Signature]
 22 R 22

APPROVED UNDER THE LAND REGISTRY ACT
 ON THE 20TH DAY OF APRIL 1959
[Signature]
 APPROVING OFFICER CITY OF PRINCE GEORGE, B.C.

I, SHERIFF OF THE CITY OF PRINCE GEORGE, BRITISH COLUMBIA
 LAND SURVEYOR MAKE OATH AND SAY THAT I WAS PRESENT AT
 AND DID PERSONALLY SUPERINTEND THE SURVEY REPRESENTED BY
 THIS PLAN, AND THAT THE SURVEY AND PLAN ARE CORRECT THE
 SAID SURVEY WAS COMPLETED ON THE 20TH DAY OF JUNE 1958

OWNER *[Signature]*

WITNESS

SWORN BEFORE ME AT THE CITY OF PRINCE GEORGE
 THIS 2ND DAY OF MAY 1959
 A COMMISSIONER FOR TAKING
 AFFIDAVITS WITHIN BRITISH COLUMBIA

MORTGAGEE

REF NO 58074