

PLAN OF SUBDIVISION OF PART OF THE SE 1/4 OF DISTRICT LOT 1600 AND PART OF THE SW 1/4 OF DISTRICT LOT 2003 CARIBOO DISTRICT

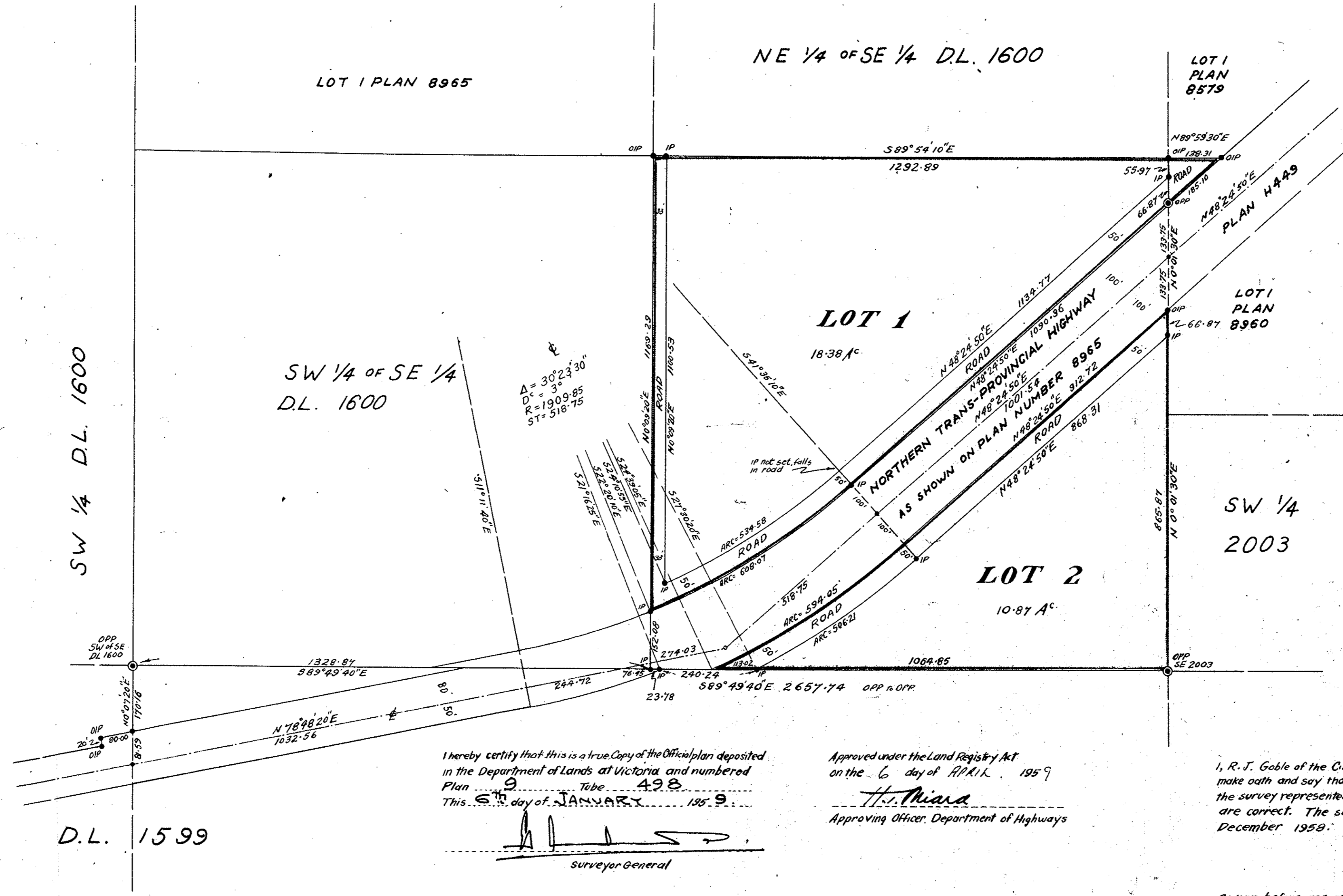
SCALE: 1 INCH = 200 FEET

PLAN No. 9649

Deposited in the Land Registry Office at Kamloops
This 5th day of JANUARY 1959

[Signature]
REGISTRAR

LEGEND:
Bearings Astronomic and are derived from the West boundary of the SW 1/4 of D.L. 2003 as shown on Plan H449
Old Standard Pipe Posts found shown thus: ○ OPP
Old Iron Posts found shown thus: ● DIP
Iron Posts set shown thus: ● IP



I hereby certify that this is a true copy of the Official plan deposited in the Department of Lands at Victoria and numbered Plan 9, Tab 492. This 5th day of JANUARY 1959.

[Signature]
Surveyor General

Approved under the Land Registry Act on the 6 day of JANUARY 1959.

[Signature]
Approving Officer, Department of Highways

I, R. J. Goble of the City of Prince George, British Columbia Land Surveyor make oath and say that I was present at and did personally supervise the survey represented by this plan and that the survey and plan are correct. The said survey was completed on the 10th day of December 1958.

[Signature]
B.C.L.S.

Sworn before me at the City of Prince George this 15th day of DECEMBER 1958.

[Signature]
A Commissioner for Taking Affidavits within British Columbia

Mr. William Whyte Series Goble
B.C. Land Surveyors
REF. No. 58138

198/12672-9-1275319