

Plotted (GE)

# PLAN OF LOT 1 IN THE SE 1/4 OF DL 2003 CARIBOO DISTRICT - BRITISH COLUMBIA.

SCALE ~ 1" = 200'

PLAN No. 9648  
Deposited in the Land Registry Office at Kamloops  
this 5<sup>th</sup> day of MAY 1959

*[Signature]*  
Registrar

Bearings are astronomic, derived from the South Bdy. of DL 2003.

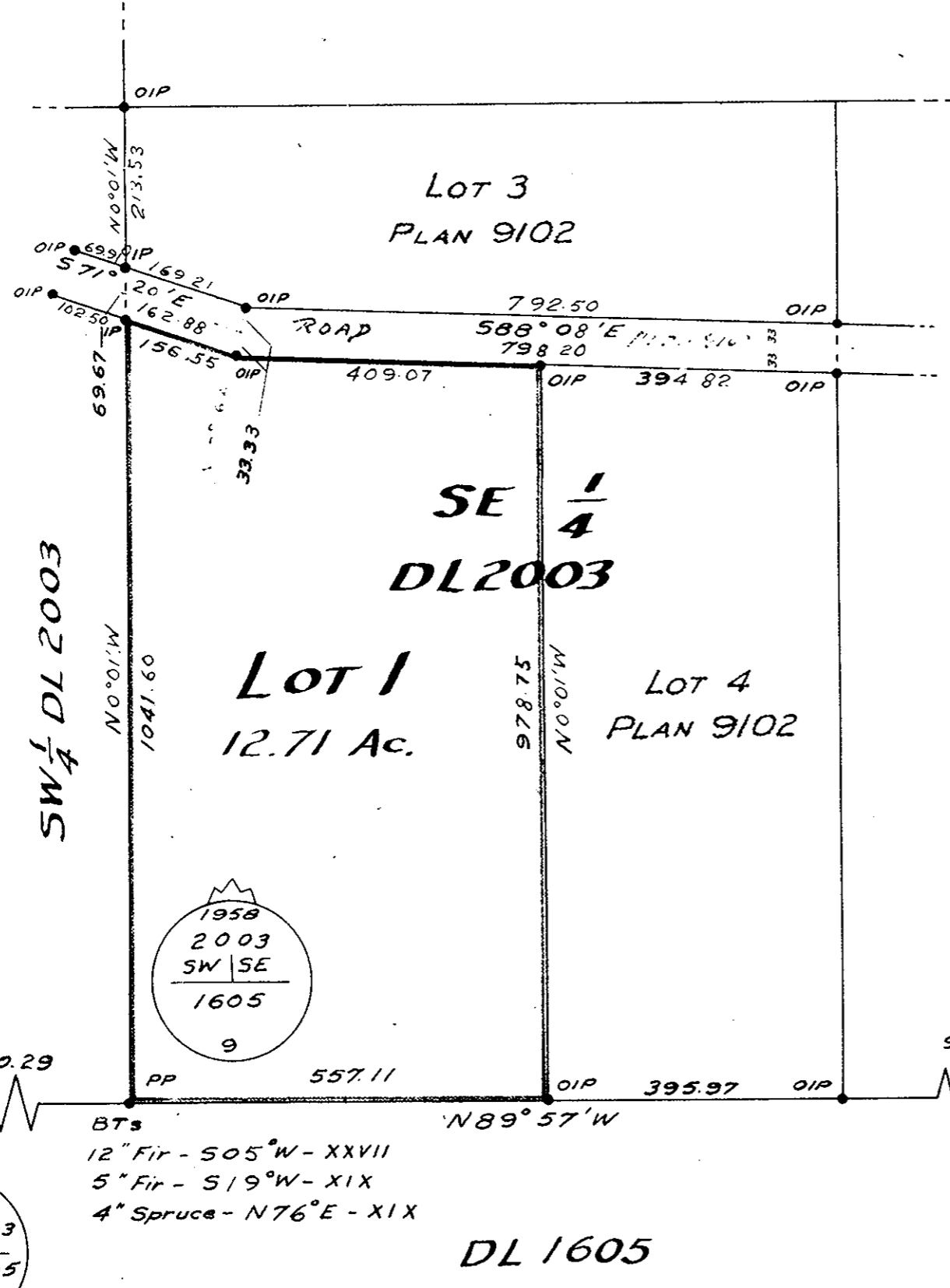
- IP Denotes an iron pin set on this survey.
- OIP Denotes an iron pin found in place.
- PP Denotes a Standard Pipe Post set on this survey.
- OPP Denotes a Standard Pipe Post found in place.

I, F.P. BURDEN, of the City of Prince George, a British Columbia Land Surveyor, make oath and say that I was present at and did personally superintend the survey represented by this plan, and that the survey and plan are correct. The said survey was completed on the 17<sup>th</sup> day of September, 1958.

Sworn before me at Prince George  
this 19<sup>th</sup> day of September, 1958.

*[Signature: F.P. Burden]*  
B.C.L.S.

*[Signature]*  
A Commissioner for taking affidavits  
within British Columbia.



I hereby certify that this is a true copy  
of the Official Plan on deposit in the  
Department of Lands and Forests  
and numbered Plan 1 Tube 491.

*[Signature]*

Surveyor General  
Victoria, B. C.  
19<sup>th</sup> February, 1959.

Approved under the Land Registry Act  
this 31<sup>st</sup> day of MARCH 1959

*[Signature: A. J. Downing]*  
Approving Officer, Dept. of Highways.

DL  
1600  
DL  
1599

1957  
1600 | 2003  
1599 | 1605  
318

BTs  
12" Fir - S05°W - XXVII  
5" Fir - S19°W - XIX  
4" Spruce - N76°E - XIX

DL 1605

DL 754