

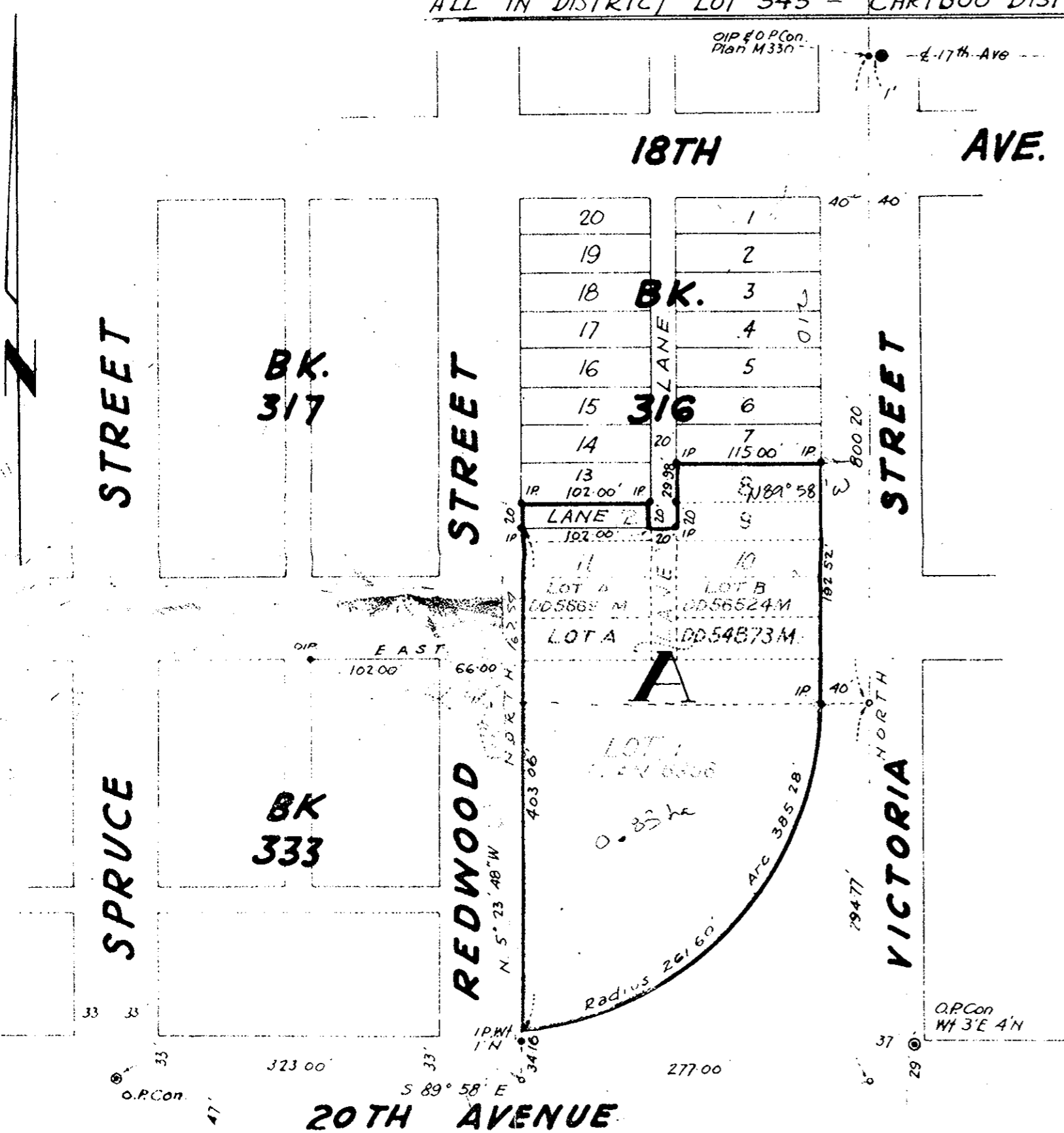
PLAN OF SUBDIVISION OF —

Lot 1, Plan 6966 and Lot A (D.D. 54873M) of Plan 6966:
 Lots 8, 9, and 10 Block 316, Plan 1268 and Lot B (D.D.
 56524M) Block 316, Plan 1268: Lots 11 and 12, Block 316,
 Plan 1268 and Lot A (D.D. 5669 M) Block 316, Plan 1268
 ALL IN DISTRICT LOT 343 - CARIBOO DISTRICT.

PLAN NO 9637

Deposited in the Land Registry
 office at Kamloops, B.C.
 this 28th day of April 1959.

[Signature]
 Registrar



Legend -
 Scale: 1" = 100'
 Bearings are astronomic and were derived from
 O.P. Cons. on 20th Ave as shown on Plan M330.
 Old Concrete Monuments found Shown O.P. Con. ●
 Old Iron pins found shown O.I.P. ●
 New Iron pins set Shown IP ●

Ronny Douglas
 R. L. Goble
[Signature]
 D.A. 100'

Approved under the Land Registry
 Act this 28th day of March 1959
[Signature]
 Approving Officer, City of Prince George

I, R. L. Goble of the city of Prince George British Columbia, being
 a Surveyor, make oath and say that I was present at and I
 personally supervised the survey represented by this plan
 and that the survey and plan are correct.
 The said survey was completed on the 2nd day
 of March, 1959.

[Signature]
 R. L. Goble
 S. C. I. S.

[Signature]
 A Commissioner for Taking Affidavits
 within British Columbia
 Mr. William Whyte, Clerk of Goble
 Reg. No. 58115-B