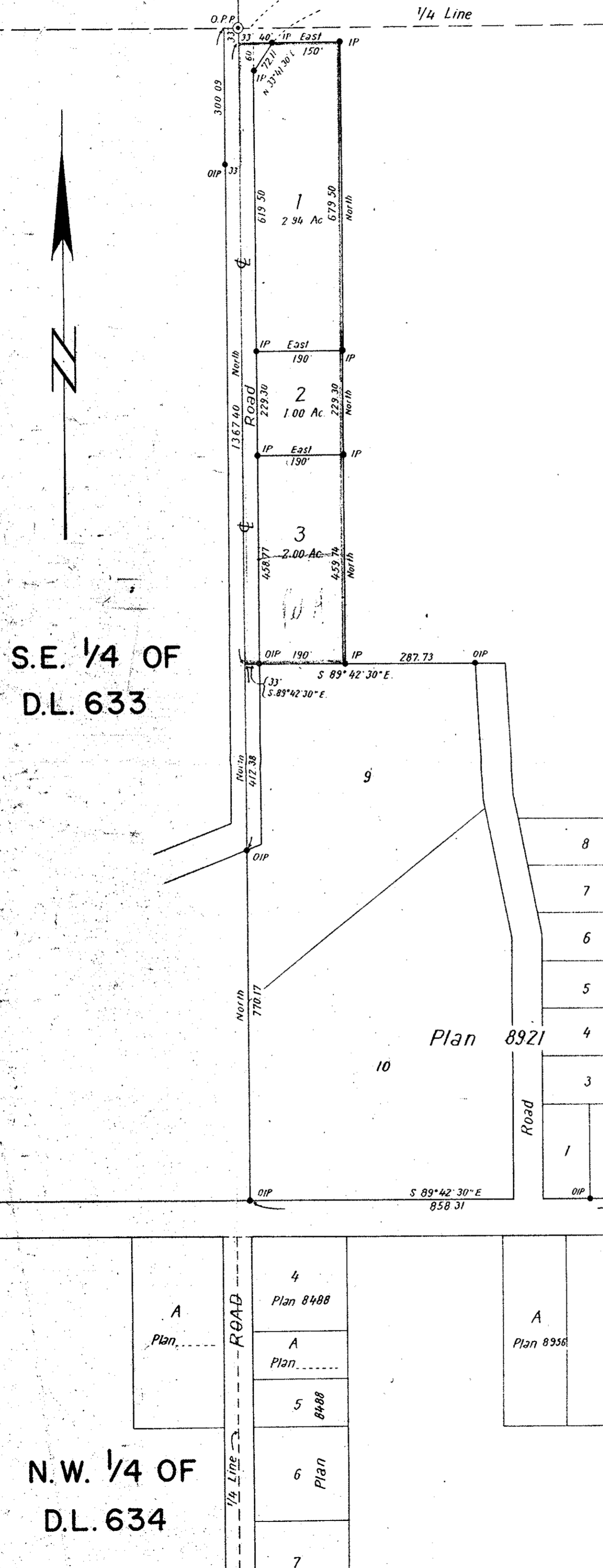


PLAN OF SUBDIVISION OF PART OF THE
S.W. 1/4 OF DISTRICT LOT 635
CARIBOO DISTRICT
SCALE 1" = 200'

Plan 9566
Deposited in the Land Registry Office of Vancouver, B.C.
this 26th day of MARCH 1959
D. J. Goble
Registrar

Legend
Bearings are astronomic and are derived from
the West boundary of the SW 1/4 of D.L. 635
as shown as North on Plan 8921
Old standard pipe posts found shown thus \odot O.P.P.
Old iron posts found shown thus \bullet OIP
Iron posts set shown thus \bullet IP



S.E. 1/4 OF
D.L. 633

S.W. 1/4 OF DISTRICT LOT 635

N.W. 1/4 OF
D.L. 634

N.E. 1/4 OF D.L. 634

N 1/2 OF D.L. 1555

I, R.J. Goble, of the city of Prince George, British Columbia Land Surveyor,
make oath and say that I was present at and did personally supervise the
survey represented by this plan and that the survey and plan are correct.
The said survey was completed on the 27th day of October 1958

Sworn before me at the city of Prince George
this 28th day of OCTOBER 1958

Approved under the Land Registry Act
this 28th day of JANUARY 1959

Ref. No. 58113 (Lot 1)
" 58126 (Lot 7)
" 58128 (Lots 9-18)
" 58130 (Lot 2)