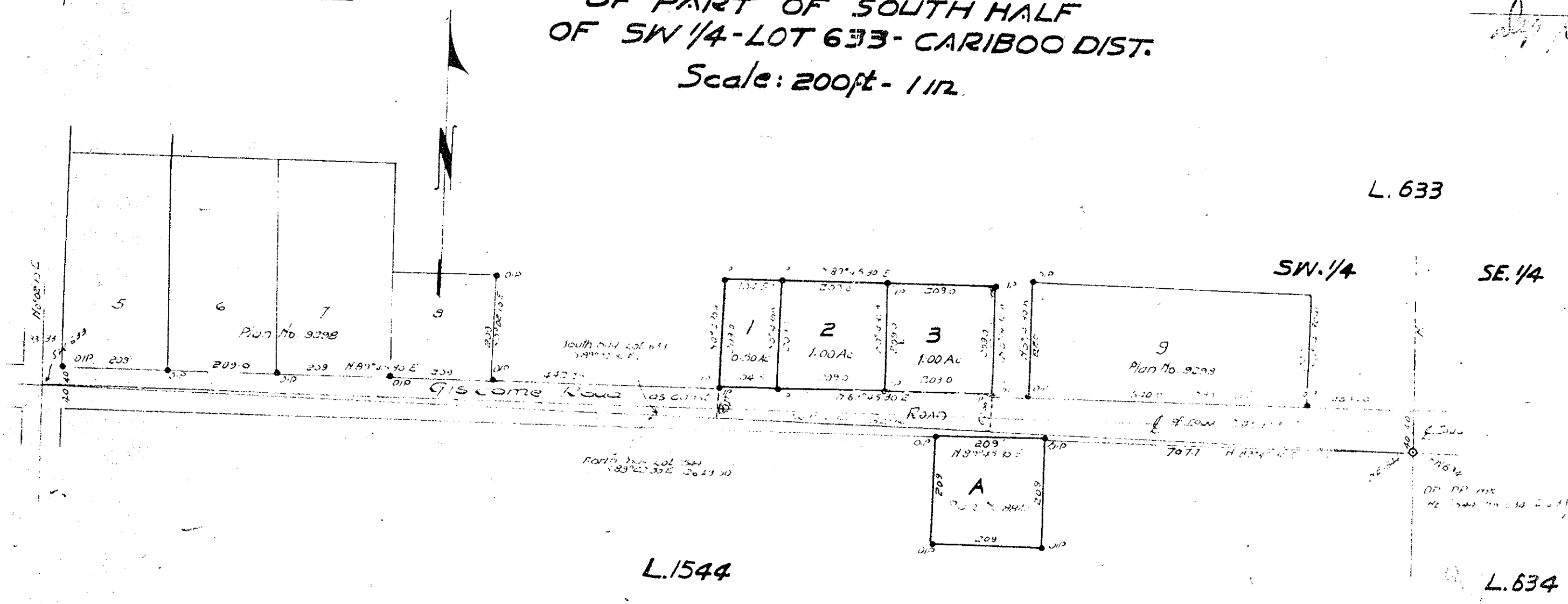


Approved under the Land
Registry Act, 1946
of B.C. 1946
W. Powering
Approving Officer
Dept. of Highways

PLAN No. 9397
Deposited in the Land Registry
Office at Victoria B.C. on 9th
JAN. 1950
W. Powering
Registrar

PLAN OF SUBDIVISION
OF PART OF SOUTH HALF
OF SW 1/4 - LOT 633 - CARIBOO DIST.
Scale: 200ft - 1 in.



Bearings are astronomical derived
from North magnetic of Lot A
Plan 20840 Lot 1541 Cariboo Dist.

Old pipe post shown ○ OPP
Old iron stakes shown ● OIP
Iron stakes set shown ● IP

Inspected Dec. 10th 1950
John Campbell
B.C.S.

Owner

Witness

I, J. F. Campbell of City of Prince George a
British Columbia and sheriff make with good will
that I do present at this survey and hereby supersede the
survey represented by this map and that the survey
and plan are correct. The said survey was completed on
the 22nd day of Sept. 1950
Sworn before me
this 22nd day of Sept. 1950
John Campbell

W. Powering
Commissioner for Survey Affairs
British Province of B.C.