

PLAN OF SUBDIVISION OF PART OF THE SW 1/4 OF DISTRICT LOT 2433 CARIBOO DISTRICT.

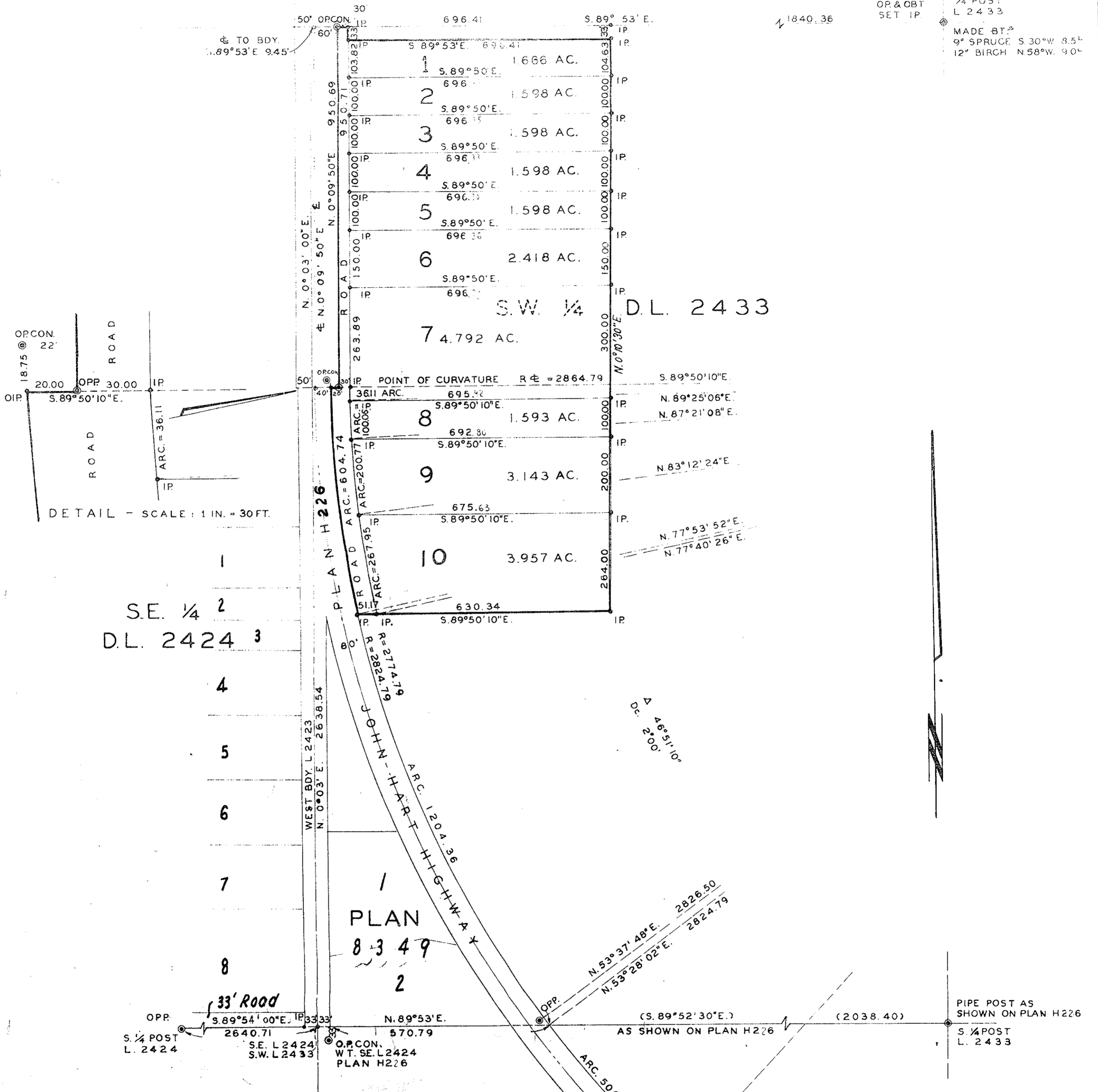
PLAN NO 1394
DEPOSITED IN THE LAND REGISTRY OFFICE AT KAMLOOPS THIS 7th DAY OF JANUARY 1958

SCALE: 1 IN. = 200 FT.

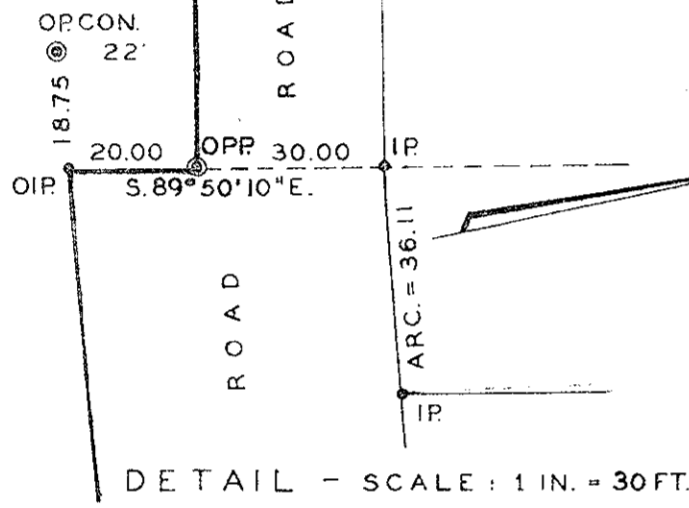
REGISTRAR

LEGEND: BEARINGS ARE ASTRONOMIC AND WERE DERIVED FROM OLD CONCRETE MONUMENTS SHOWN AS N.0°09'50"E. ON PLAN H 216.

OLD CONCRETE MONUMENTS FOUND SHOWN THUS (Symbol)
OLD IRON PINS FOUND SHOWN THUS (Symbol)
OLD STANDARD PIPEPOSTS FOUND SHOWN THUS (Symbol)
IRON PINS SET SHOWN THUS (Symbol)



FOUND OP & OBT SET IP. 1/4 POST L 2433
MADE BY 9" SPRUCE S 30° W 8.5' 12" BIRCH N 58° W 9.0'



S.E. 1/4 2
D.L. 2424 3

PLAN 8349

OPP. 33' Road S. 89° 54' 00" E. 2640.71
S. 1/4 POST L 2424
S.E. L 2424 S.W. L 2433
O.P. CON. WT. SE. L 2424 PLAN H 226
N. 89° 53' E. 570.79
N. 53° 37' 48" E. 2826.50
N. 53° 28' 02" E. 2824.79
(S. 89° 52' 30" E.) (2038.40)
PIPE POST AS SHOWN ON PLAN H 226
S. 1/4 POST L 2433

APPROVED UNDER THE LAND REGISTRY ACT ON THE 18th DAY OF NOVEMBER 1958

A. J. Powering
APPROVING OFFICER
DEPT. OF HIGHWAYS VICTORIA

OWNER *M. J. Denis*
WITNESS *[Signature]*

I, D.G. WHYTE OF THE CITY OF KAMLOOPS, BRITISH COLUMBIA LAND SURVEYOR MAKE OATH AND SAY THAT I WAS PRESENT AT AND DID PERSONALLY SUPERINTEND THE SURVEY REPRESENTED BY THIS PLAN AND THAT THE SURVEY AND PLAN ARE CORRECT. THE SAID SURVEY WAS COMPLETED ON THE 28th DAY OF AUGUST 1958.

[Signature]
B.C.L.S.

SWORN BEFORE ME AT THE CITY OF PRINCE GEORGE THIS 19th DAY OF September 1958
[Signature]
A COMMISSIONER FOR TAKING AFFIDAVITS WITHIN BRITISH COLUMBIA

McWILLIAM, WHYTE & SERLE

REF. NO 57054 A