

PLAN No 9298

DEPOSITED IN THE LAND REGISTRY OFFICE AT KAMLOOPS THIS 27th DAY OF JANUARY 1958

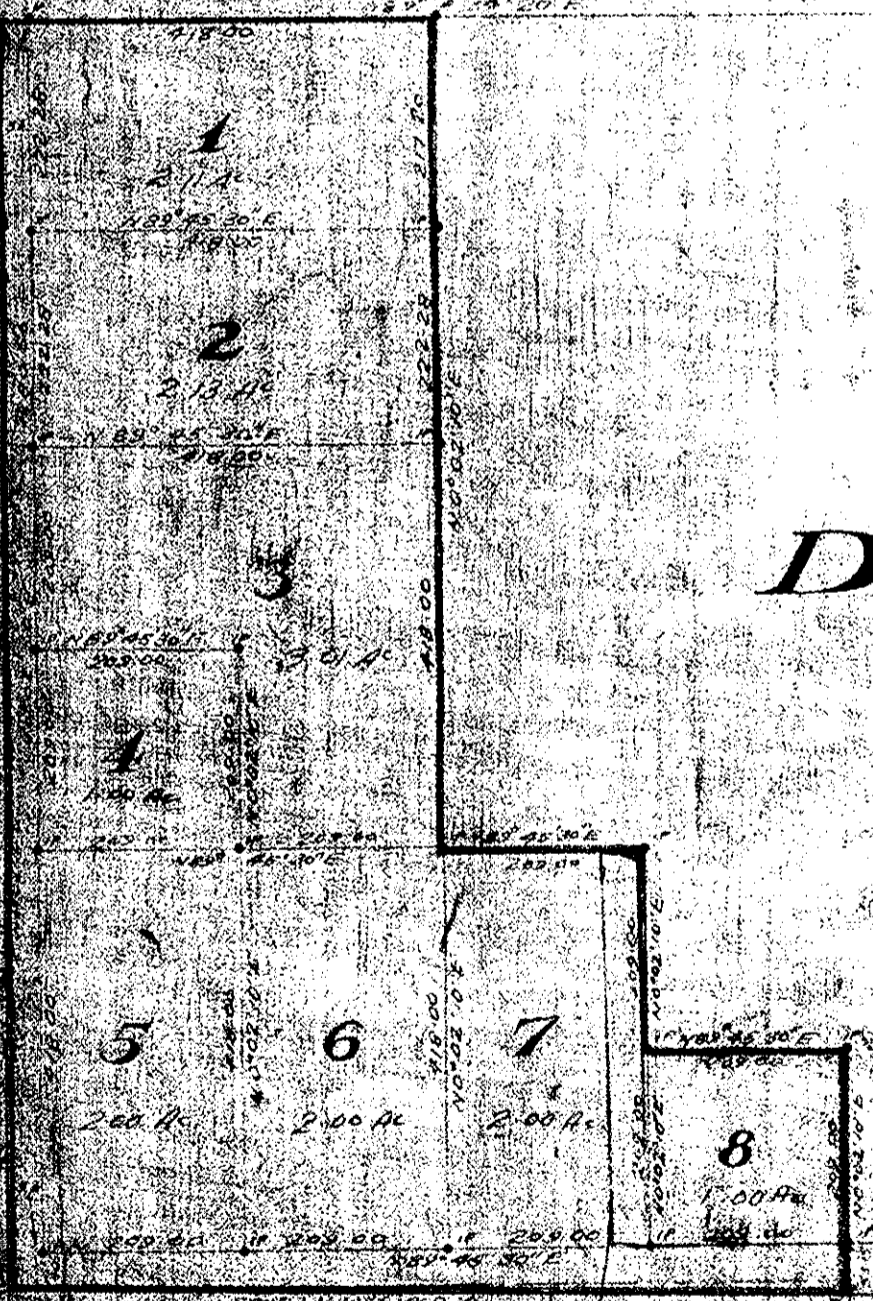
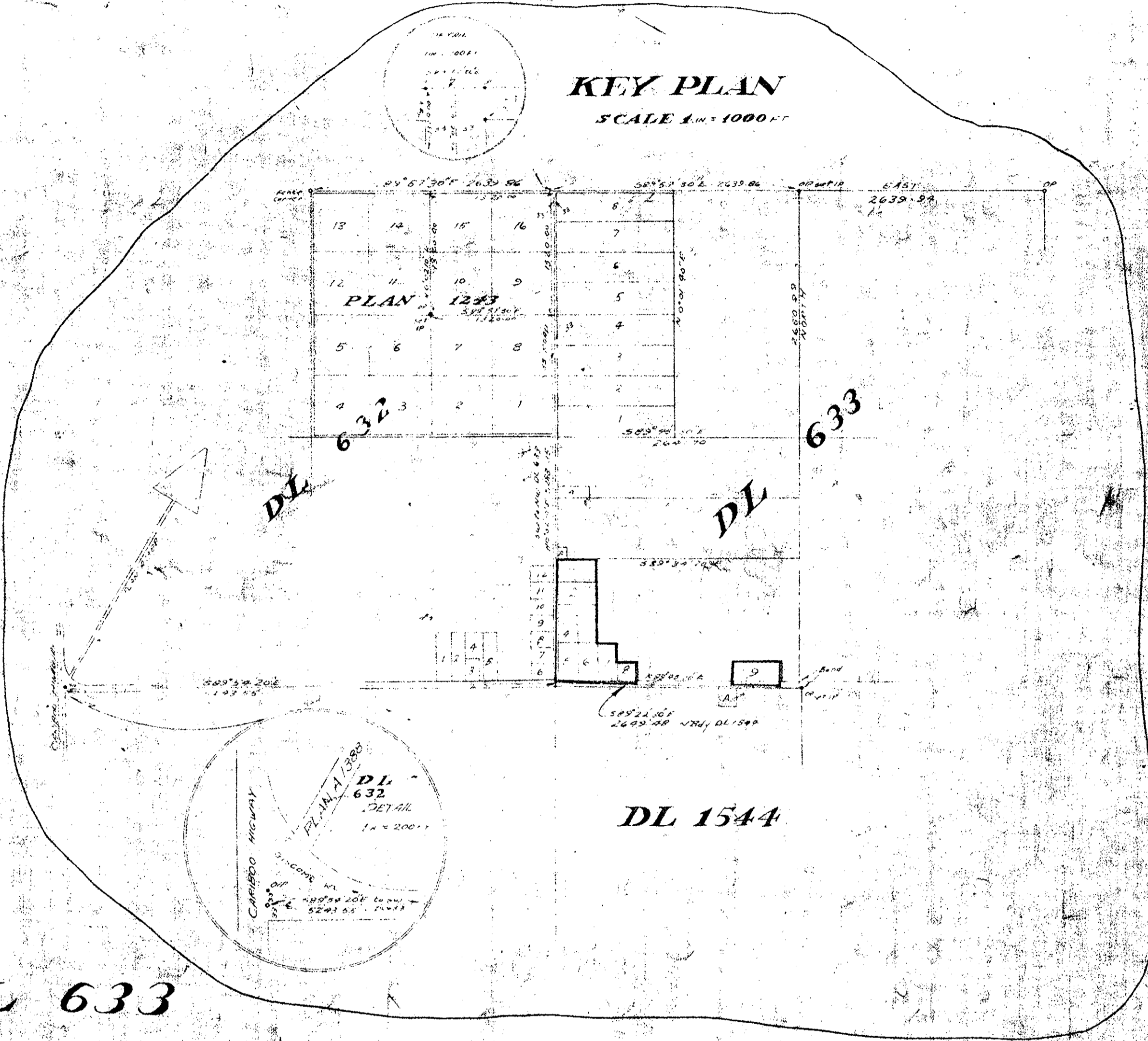
et Seville

PLAN OF SUBDIVISION OF PART OF SOUTH HALF OF THE SOUTH WEST 1/4 OF DISTRICT LOT 633 CARIBOO DISTRICT SCALE 1 in 200 FT

LEGEND:
BEARINGS ARE AZIMUTHIC AND ARE EXPRESSED IN D.M.S.
THE NORTH BOUNDARY OF THE NE 1/4 OF DL 633 IS EAST.
DL 1544 shown in black
DL 633 shown in grey
DL 1544 shown in white
DL 633 shown in white

KEY PLAN

SCALE 1 in 1000 FT



DL 633

DL 1544

I, A.W.M. Williams, of the City of Kamloops, British Columbia, Land Surveyor, make oath and say that I was present at and did personally superintend the survey represented by this plan and that the survey and plan are correct. The said survey was completed on the 25th day of November 1957.

A.W.M. Williams

B.C.L.S.

Sworn before me at Kamloops this 29th day of January 1958

J.P. [Signature]

J.P. Commissioner for Taking Affidavits within British Columbia

A. [Signature]

Notary Public

Approved Under the Land Registry Act this 28th day of AUGUST 1957

A. [Signature]

Approving Officer, Department of Highways, Victoria

REAPPROVED

A. [Signature]

APPROVING OFFICER, DEPT. OF HIGHWAYS, FEBRUARY 5, 1958

REAPPROVED

A. [Signature]

APPROVING OFFICER, DEPT. OF HIGHWAYS, July 30th 1958

REAPPROVED

A. [Signature]

APPROVING OFFICER, DEPT. OF HIGHWAYS, OCTOBER 14th 1958

Review made by Greer Nowell, New Kamloops, Scotland, AMENDED PLAN 15298, See Appendix 9298/1

DL 1544

REGISTERED IN THE LAND REGISTRY OFFICE AT KAMLOOPS THIS 27th DAY OF JANUARY 1958