

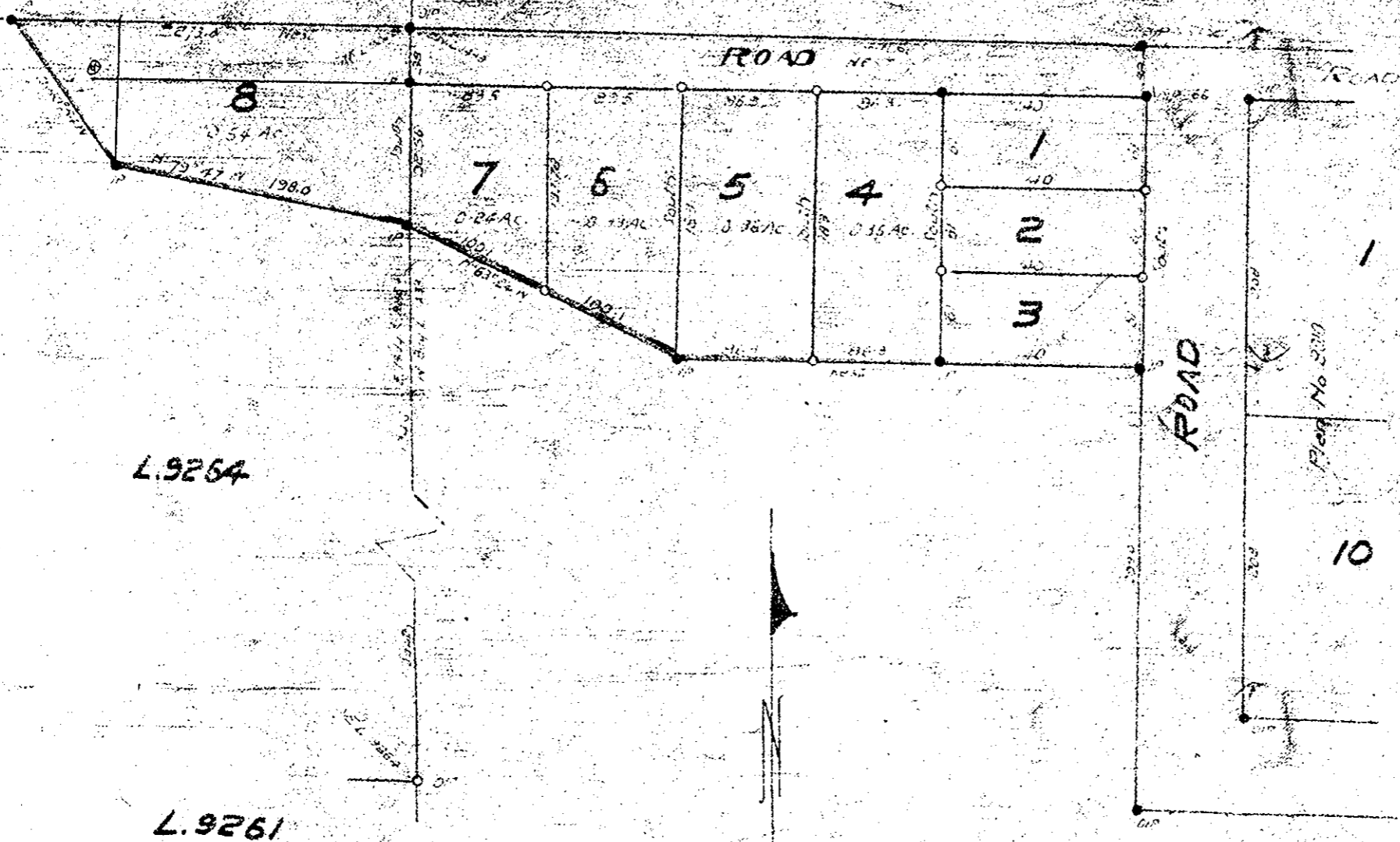
26th MAY 1958
A. J. Campbell

Plan No. 9122
Registered in the Land Registry Office
at Her Majesty's Stationery Office 1958

A. J. Campbell
Deputy Registrar

L. 9265

L. 8177



PLAN OF SUBDIVISION
OF PARTS OF LOT 1433 & LOT 9264.
CARIBOO DIST.
Scale: 100ft-1 in.

Inspected 14 Mar 1958
J. J. Campbell
D.C.S.

APPROVED BY THE REGISTRAR
ON 14 MAR 1958

A. J. Campbell
DRAWN BY
A. J. Campbell
WITNESSES

THIS PLAN IS A TRUE AND CORRECT COPY
OF THE ORIGINAL PLAN AS REGISTERED
IN THE LAND REGISTRY OFFICE
ON 14 MAR 1958