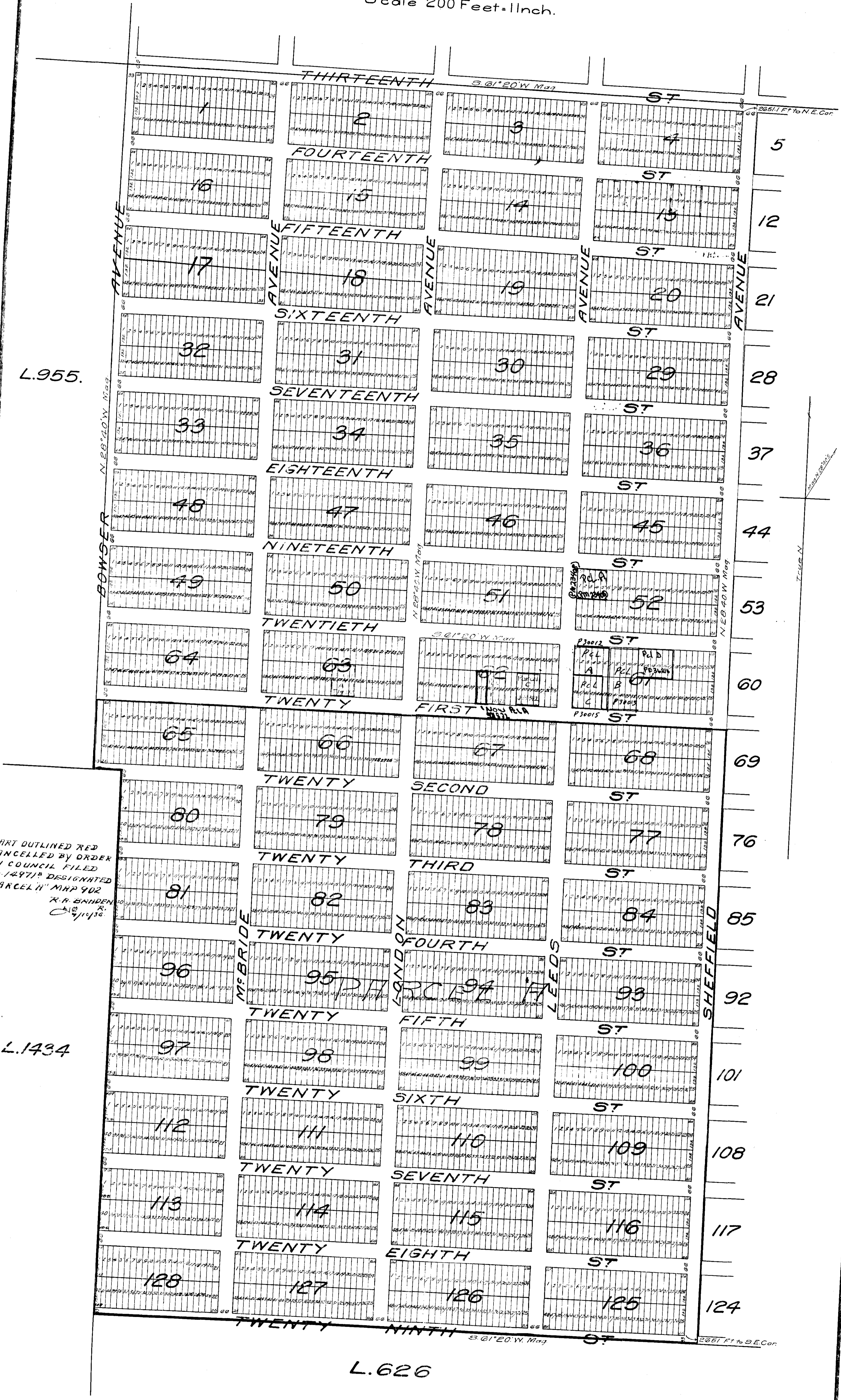


PLAN
OF SUBDIVISION
OF THE WESTERN PORTION OF
L.629.G.I.
CARIBOO DIST. B.C.

Scale 200 Feet = 1 Inch.



902
201/1/75

902

L.955.

L.1434

L.626

Each Street

I, O.B.N. Wilkie, a B.C.L.S. certify that this plan is a correct representation of the survey made by me upon the ground and is prepared under the Provisions of the Land Registry Act

O.B.N. Wilkie

PLAN OF SUBDIVISION OF THE WESTERN PORTION OF L.629.G.I. CARIBOO DIST. B.C.

902

Scale 200 Feet = 1 Inch.



L.955.

PART OUTLINED RED
 CANCELLED BY ORDER
 IN COUNCIL FILED
 No. 149718 DESIGNATED
 PARCEL "H" MAP 902
 R.A. BRIDGES
 C. 1/1/35

L.1434

L.629

*Ball...
...*

*...B.C.L.C. setting the
...is a correct representation
...made by
...pres...*