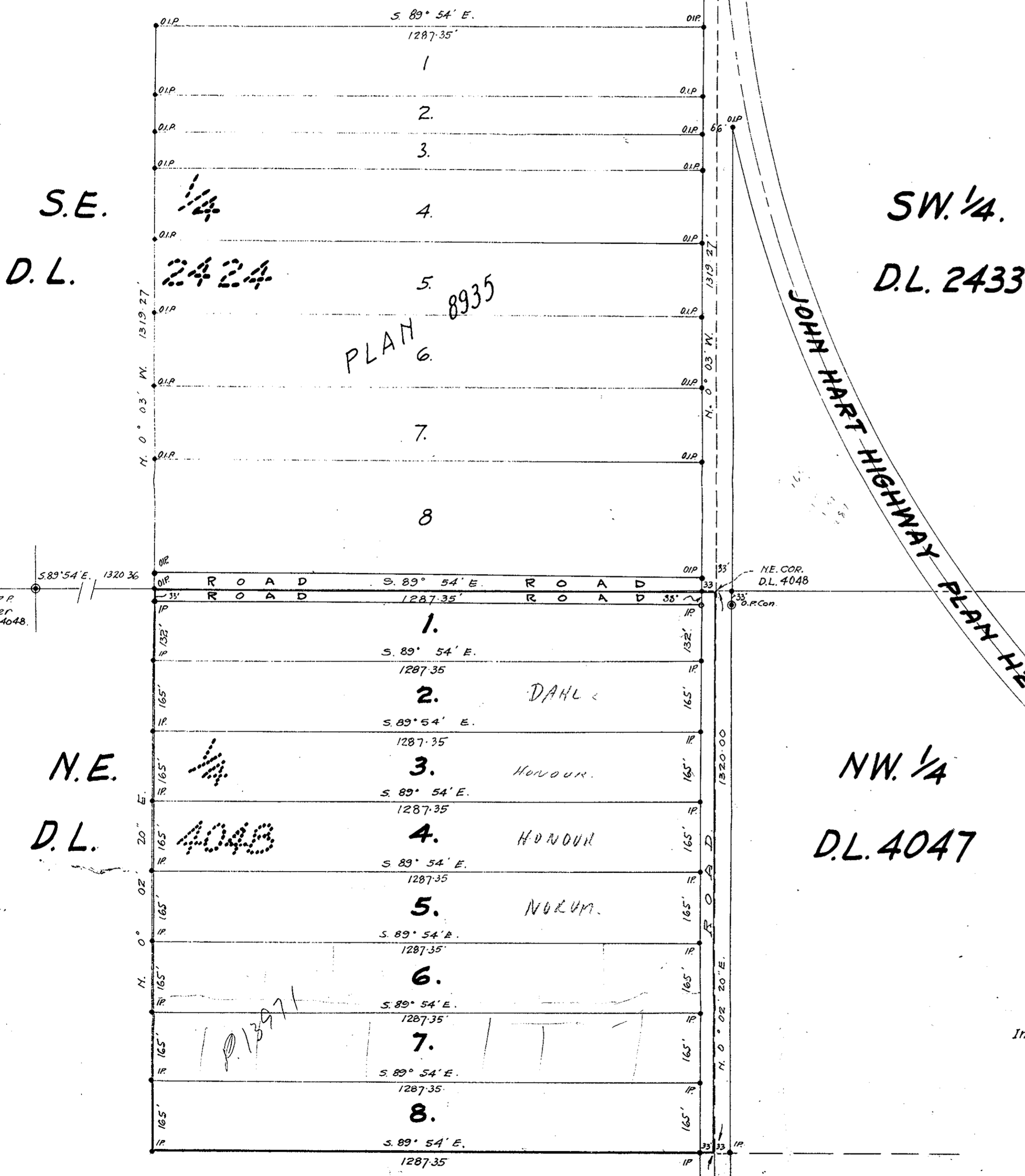


# PLAN OF SUBDIVISION OF THE NE. 1/4 OF THE NE. 1/4 OF D.L. 4048 CARIBOO DISTRICT.

PLAN No. *8970*  
*A.S. Barth*  
 Registrar

Scale 1" = 200'  
 Bearings are Astronomic and were derived from  
 Highway Monuments as shown on Plan 8935

Old Pipe Posts found shown...    ⊙ O.P.P.  
 Old Concrete Monuments found shown    ⊙ O.P. Con.  
 Old Iron Pins found shown    • O.I.P.  
 New Iron Pins Set shown    • I.P.



1322  
 165  
 165  
 165  
 165  
 165  
 165  
 1287  
 33  
 1320

Approved under the Land Registry Act  
 this 22<sup>nd</sup> day of APRIL 1958.

*A. Powering*  
 Approving Officer Dept of Highways  
 Victoria, B.C.

*K.C. Sullivan*  
 Owners' Signature

*Hanna Stewart*  
 Witness

Found OBT (stump  
 pushed over)  
 Mkd. "B.T. XIV"

Inspected February 13th 1958.

*D. G. Whyte*  
 B. C. L. S.

I, D. G. Whyte of the City of Kamloops, British Columbia  
 Land Surveyor make oath and say that I was present at and  
 did personally superintend the survey represented by this plan,  
 and that the survey and plan are correct.

The said survey was completed on the 24th of August  
 1957.

Sworn before me at the city of Prince George this 28<sup>th</sup>  
 day of August 1957.

*D. G. Whyte*  
 B. C. L. S.  
*William Whyte & Serle*  
 A Commissioner for taking Affidavits  
 within British Columbia.