

PLAN OF SUBDIVISION OF PART OF THE EAST 1/2 OF DISTRICT LOT 1600. CARIBOO DISTRICT.

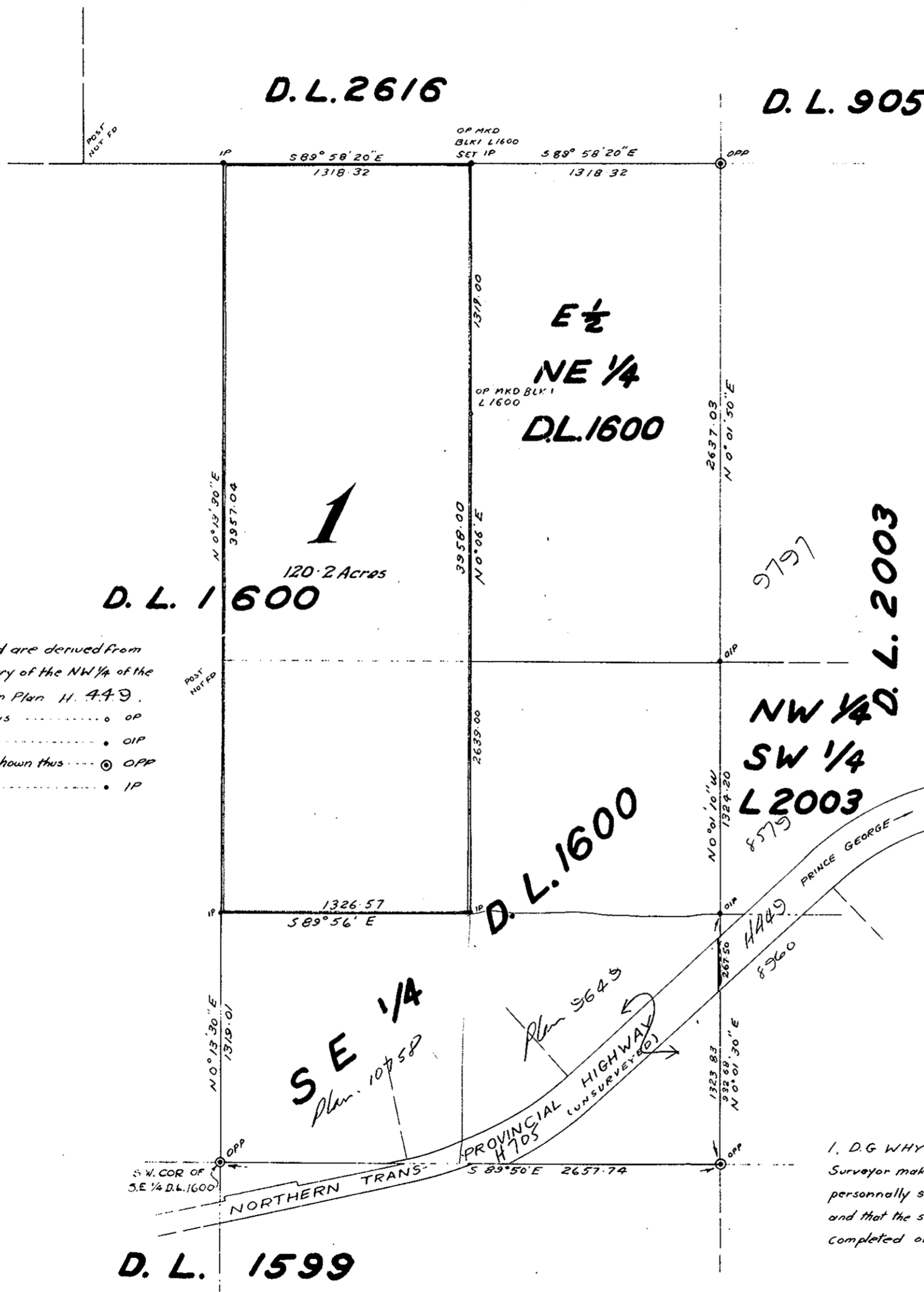
SCALE: 1 IN. = 600 FT.

PLAN NO. 8965
Deposited in the Land Registry
Office at Kamloops this
85th day of June 1958

A. J. Smith

REGISTRAR

PLOTTED (FE)(FF.)
(FG)



LEGEND:

Bearings are Astronomic and are derived from old iron posts on the West Boundary of the NW 1/4 of the SW 1/4 of L2003, as shown on Plan H. 449. Old Wooden Posts found shown thus \circ OP Old Iron Posts found shown thus \bullet OIP Old Standard Pipe Posts found shown thus \odot OPP Iron Posts set shown thus \bullet IP

Thereby certify that this is a true copy of the Official Plan on deposit in the Department of Lands and Forests and numbered Plan 10 Tube 484.

A. J. Smith
Acting Surveyor General
Victoria B.C.
5th June, 1958.

I, D.G. WHYTE of the City of Kamloops British Columbia Land Surveyor make oath and say that I was present at and did personally superintend the survey represented by this plan and that the survey and plan are correct. The said survey was completed on the 2nd day of April 1958.

D. G. Whyte B.C.L.S.

Sworn before me at the City of Kamloops this 21st day of April 1958.

Robert J. Gray
A Commissioner for taking Affidavits within British Columbia

REF. NO. 58004