

PLAN OF SUBDIVISION OF SE 1/4 OF THE SE 1/4 OF DISTRICT LOT 2424 CARIBOO DISTRICT.

PLAN NO 8935

Deposited in the Land Registry Office at Kamloops this 11th day of June 1958

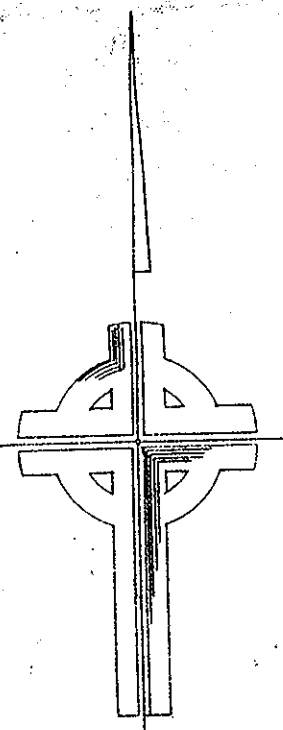
A. Saml.
Registrar

Scale: 1" = 200'
Bearings are astronomic, and derived from Old Concrete Monuments witnessing the East Bdy. of L2424 on Plan H266.

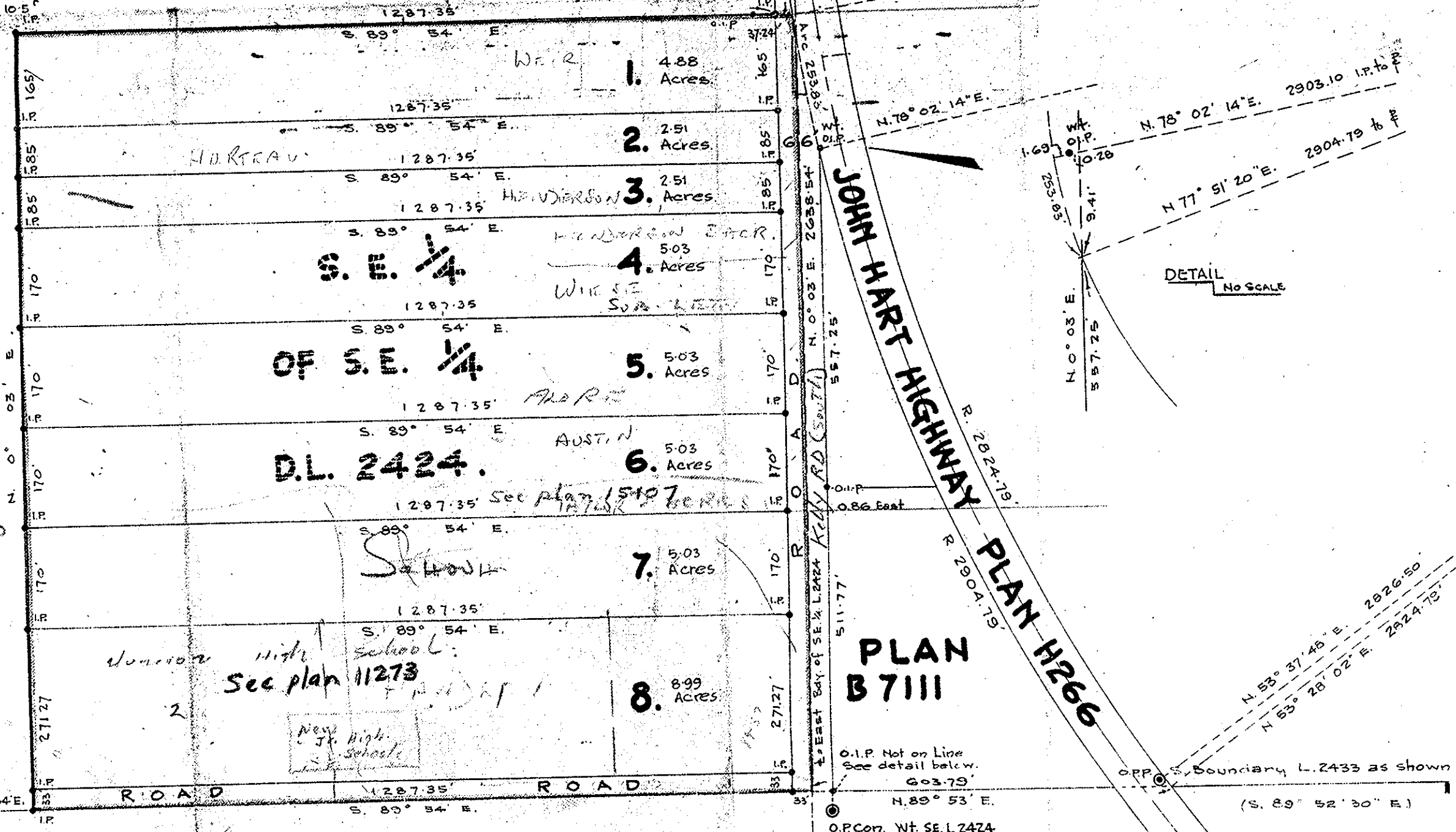
- Old Iron Pins Found Shown ● O.I.P.
- Old Pipe Posts Found Shown ○ O.P.P.
- Old Concrete Monuments Found Shown ⊙ O.P.Con.
- New Iron Pins set shown • I.P.

S.E. 1/4 D.L. 2424

S.W. 1/4 D.L. 2433



SW 1/4 of SE 1/4 Folio 4357:200



D.L. 4048.

I, D.G. Whyte of the city of Kamloops, British Columbia Land Surveyor make oath and say that I was present at and did personally superintend the survey represented by this plan, and that the survey and plan are correct. The said survey was completed on the 14th day of June 1957.

D.G. Whyte
D.G. Whyte, B.C.L.S.

Inspected on the 13th of Feb. 1958

D.G. Whyte
B.C.L.S.

Sworn before me at the city of Prince George this 19th day of June 1957

John McLaughlin
A Commissioner for taking Affidavits within British Columbia

Approved under the Land Registry Act this 22nd day of June 1958

A. Saml.
Approving Officer Dept. of Highways, Victoria

A. Saml. Owner

W. J. ... Witness

RECEIVED
JUL 7 1958
PROVINCIAL ASSESSOR
PRINCE GEORGE, B. C.

McWILLIAM, WHYTE & SERLE
PRINCE GEORGE OFFICE
1368 Third Avenue
REFERENCE NO. 57055

1368
5353
1001

2.51

W

54172