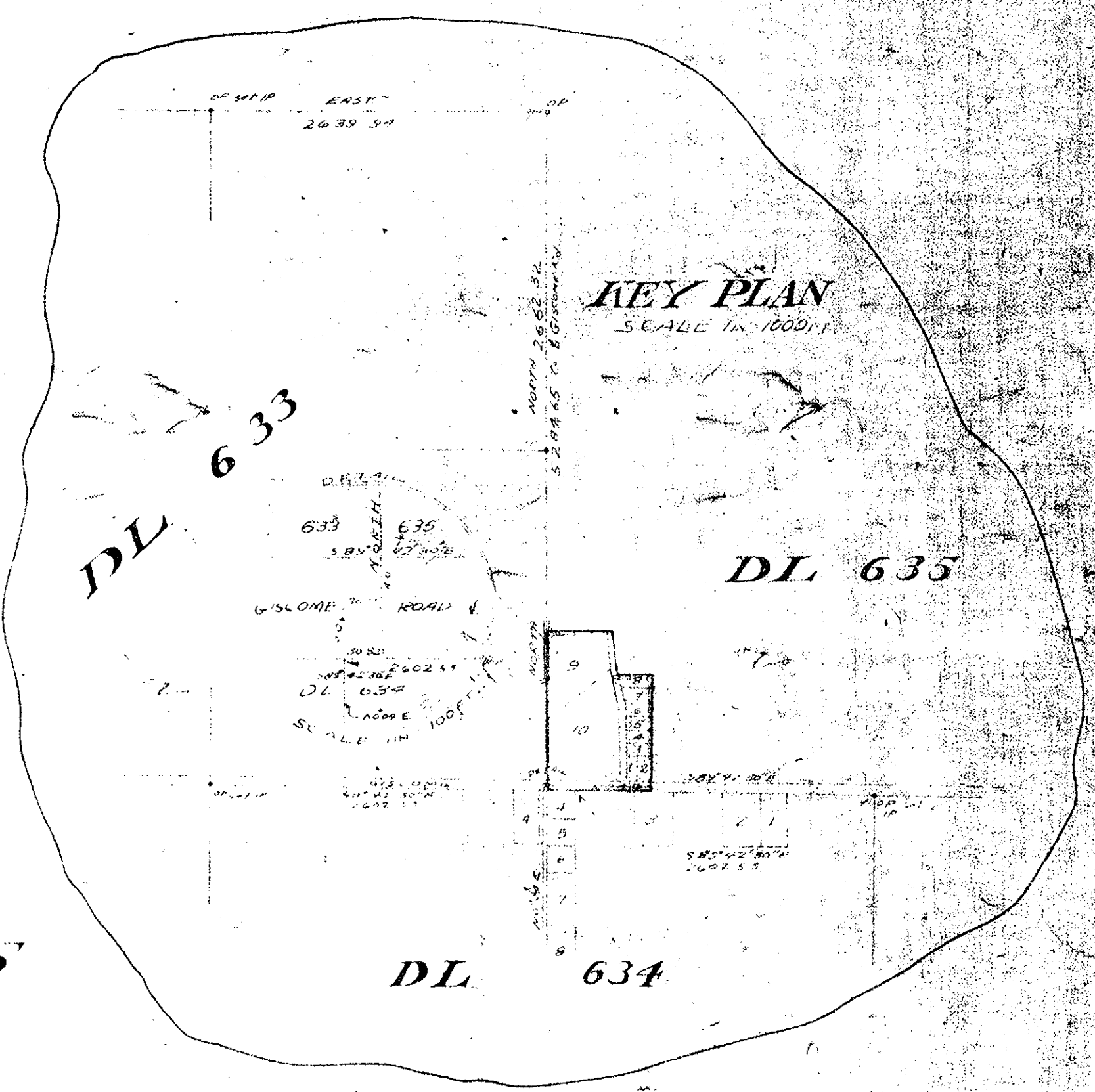
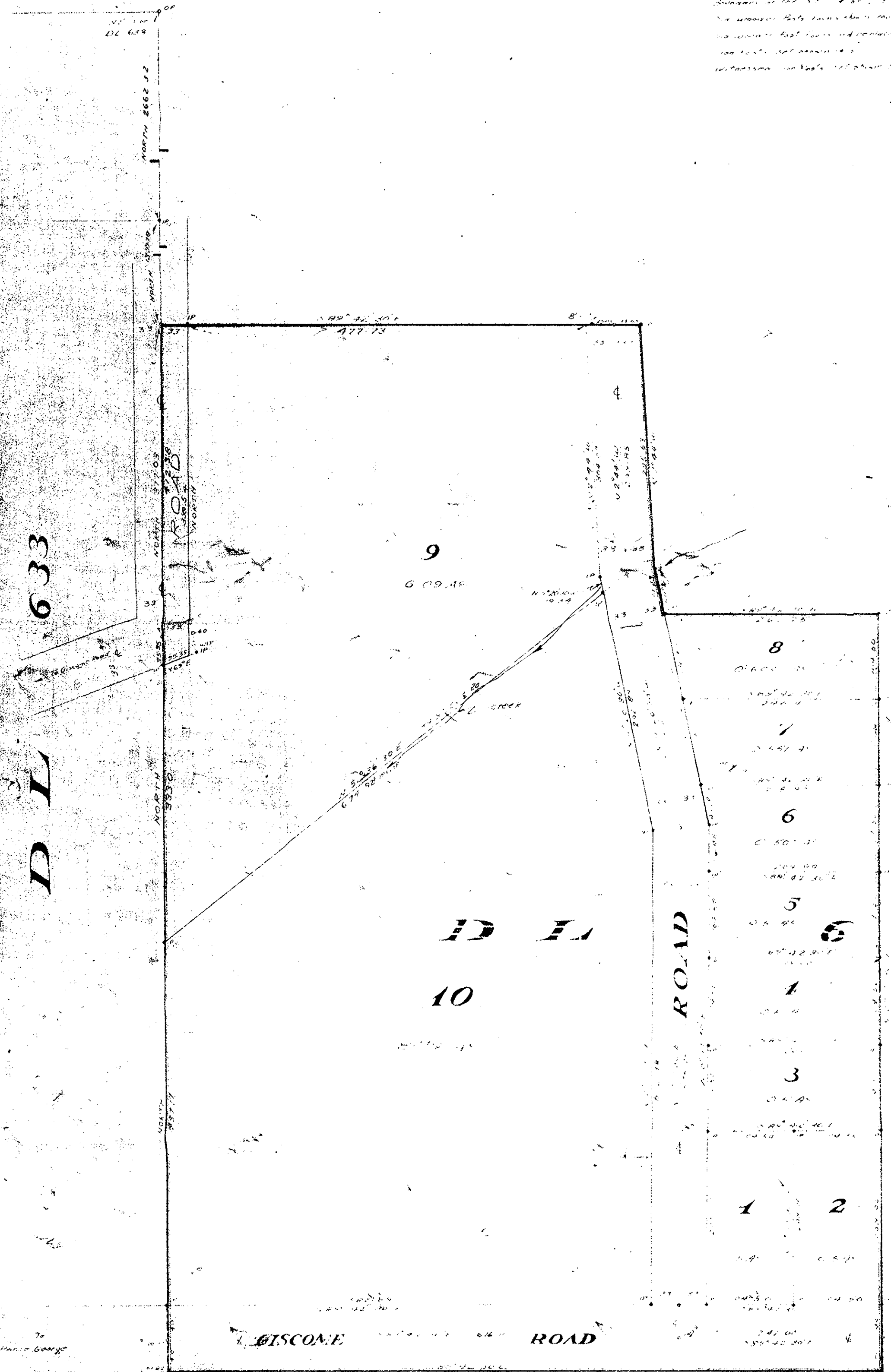


**PLAN
 OF
 SUBDIVISION OF PART
 OF S W 1/4 OF DISTRICT LOT 635
 CARIBOO DISTRICT
 SCALE 1" = 100'**

LEGEND:

Boundaries of lots shown are as shown on the plan
 shown in the plan. The plan is a true and correct
 representation of the land shown thereon.
 The survey was made by the Surveyor General of
 the Province of British Columbia and the
 same is a true and correct representation of the
 land shown thereon.



I, J. W. ... of the Province of British Columbia
 Land Surveyor General, do hereby certify that I was present at and
 did personally supervise the survey represented by this plan
 and that the survey was made and conducted
 in accordance with the provisions of the Survey Act of British Columbia.

[Signature]
 Surveyor General
 Province of British Columbia
 11th Avenue, Victoria, B.C.
 11th Commissioner for Policy, Ministry of the Province of British Columbia

DL 634

Approved by the Land Surveyor
 on the 1st day of MAY 1958
A. J. Bowering
 Surveying Officer

REAPPROVED
A. J. Bowering
 APPROVING OFFICER
 DEPT. OF HIGHWAYS
 MAY 6, 1958