

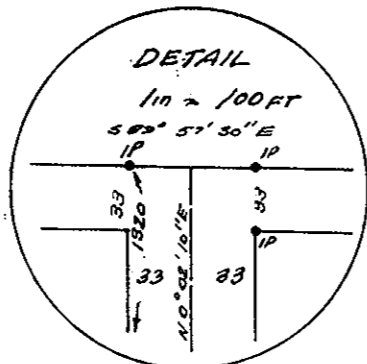
**PLAN OF SUBDIVISION OF
PART OF SOUTH HALF OF THE NORTH HALF
OF THE SOUTH WEST QUARTER OF
DISTRICT LOT 633
CARIBOO DISTRICT
SCALE: 1 IN = 100 FT.**

PLAN No 8733
DEPOSITED IN THE LAND REGISTRY
OFFICE AT KAMLOOPS THIS 18th DAY
OF March 1958.

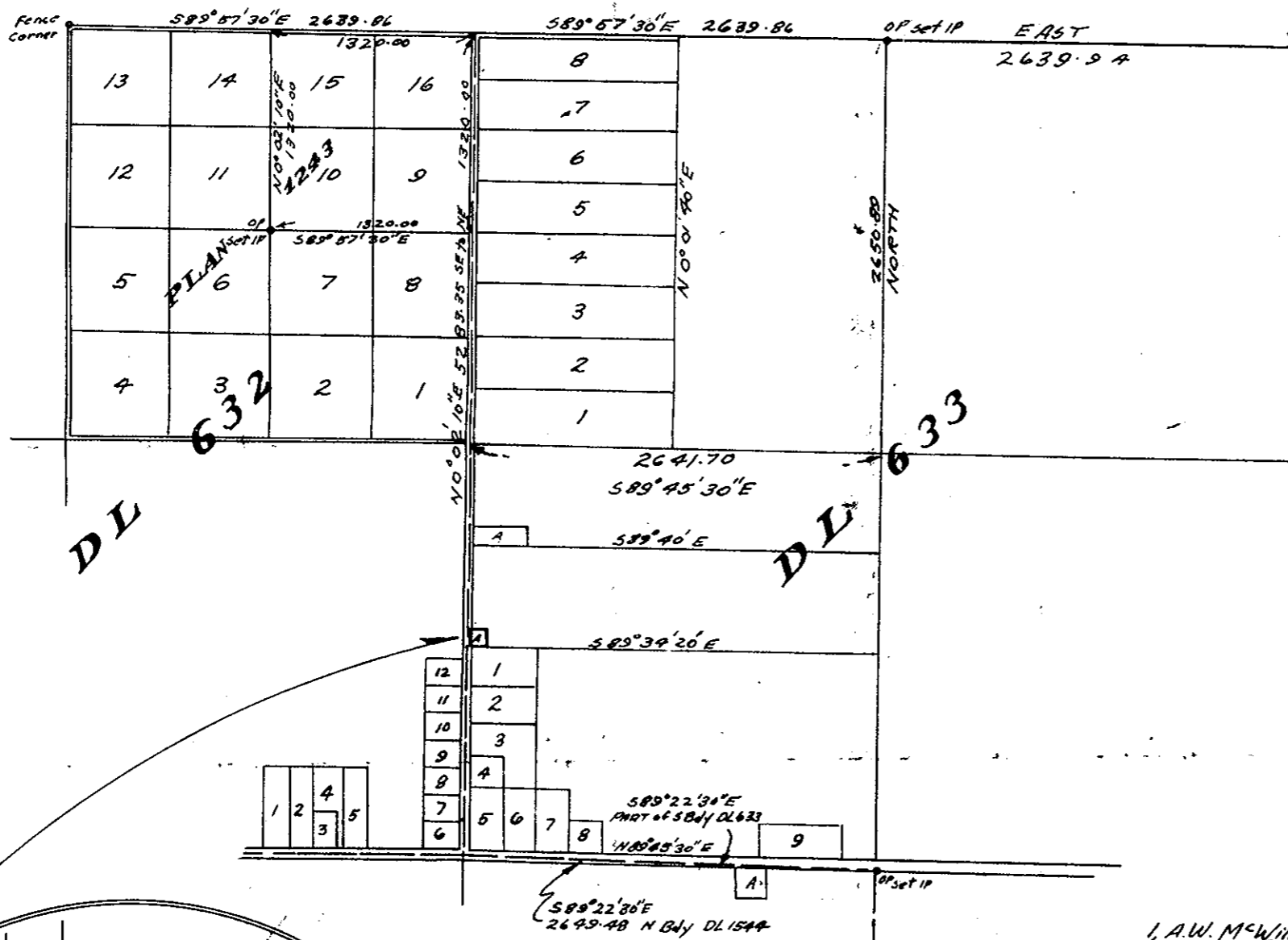
A.D. Gammell
REGISTRAR

LEGEND

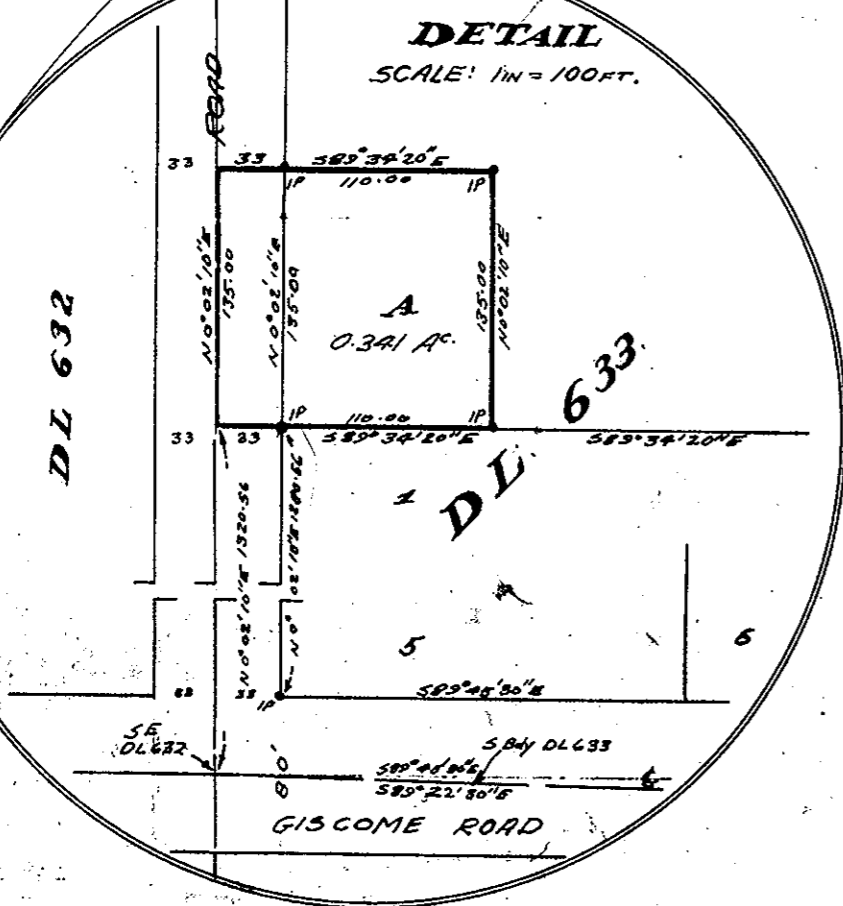
Bearings Astronomical and are derived from the North
boundary of the NE 1/4 of DL 633 as East.
Old Wooden Posts found shown thus: --- o P
Old Posts replaced by Iron Posts shown thus: --- o P set IP
Iron Posts Set shown thus: --- o IP



KEY PLAN
SCALE: 1 IN = 100 FT.



DETAIL
SCALE: 1 IN = 100 FT.



I, A.W. McWilliam of the City of KAMLOOPS British Columbia
Land Surveyor make oath and say that I was present at
and did personally superintend the survey represented by
this plan, and that the survey and plan are correct.
The said survey was completed on the 23rd day of November 1956.

A.W. McWilliam B.C.L.S.
Sworn before me at Kamloops this 4th day of
February 1957

[Signature]
A Commissioner for taking Affidavits within British Columbia.

Approved under the Land Registry Act
this 28th day of AUGUST, 1957

A.J. Powering
Approving Officer Department of Highways
Victoria, B.C.

REAPPROVED
FEBRUARY 14, 1958

A.J. Powering
APPROVING OFFICER

M. William Whyte & Sonie
B.C. Land Surveyors
219 Victoria Street
Kamloops B.C.
Job No 57-67
File No 88-7