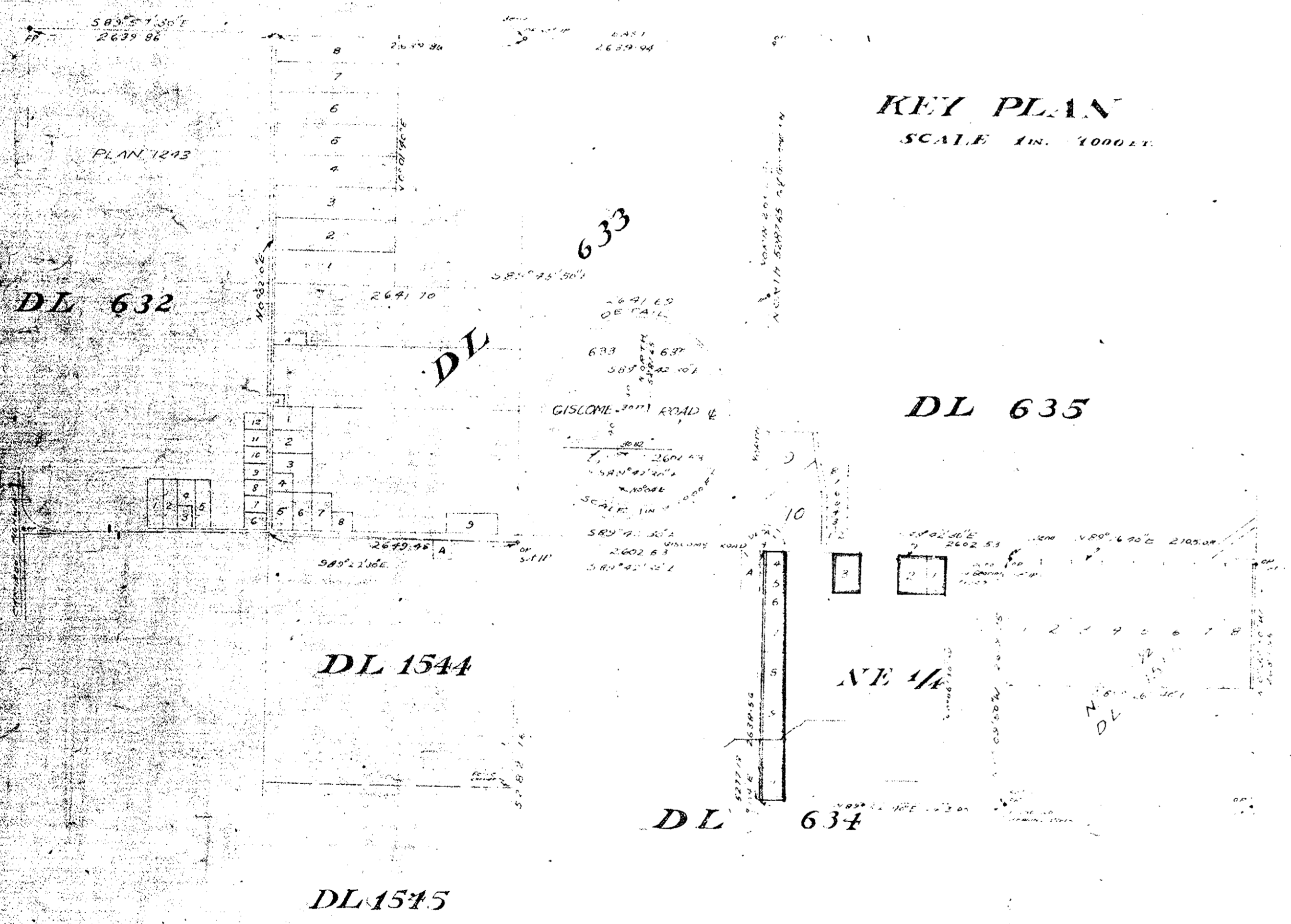


PLAN No 8488
DEPOSITED IN THE LAND REGISTRY OFFICE
AT KAMPONG THUM THIS 24th DAY OF DEC
1957
J. V. Deeth
REGISTRAR

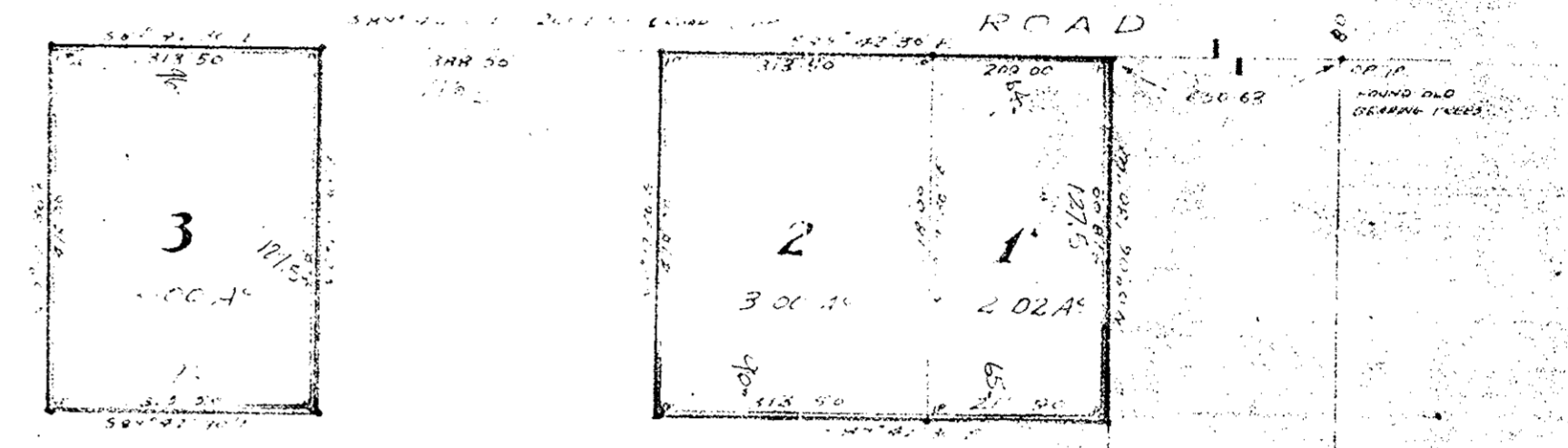
PLAN
OF
SUBDIVISION OF PART OF
NE 1/4 DISTRICT LOT 634
CARIBOO DISTRICT
SCALE 1" = 200 FT

LEGEND:
Boundaries of the lots shown on this plan are shown by a solid line.
Boundaries of the lots shown on this plan are shown by a dashed line.
Boundaries of the lots shown on this plan are shown by a dotted line.
Boundaries of the lots shown on this plan are shown by a dash-dot line.



KEY PLAN
SCALE 1" = 1000 FT

- 4
- 5
- 6
- 7
- 8
- 9
- 10
- 11



NE 1/4 DL 634

80
478
596

I, the Registrar of the Office of Land Registry, British Columbia, do hereby certify that the plan and map shown hereon are a true and correct copy of the original plan and map as deposited in my office on the 24th day of December 1957 and that the plan and map were completed on the 24th day of December 1957.

J. V. Deeth
Registrar

A. J. Powering
Surveyor

Approved by the Registrar of the Office of Land Registry, British Columbia, on the 24th day of December 1957.