

837  
W. Edwards

# PLAN OF SUBDIVISION OF D.L. 2508. CARIBOO DISTRICT

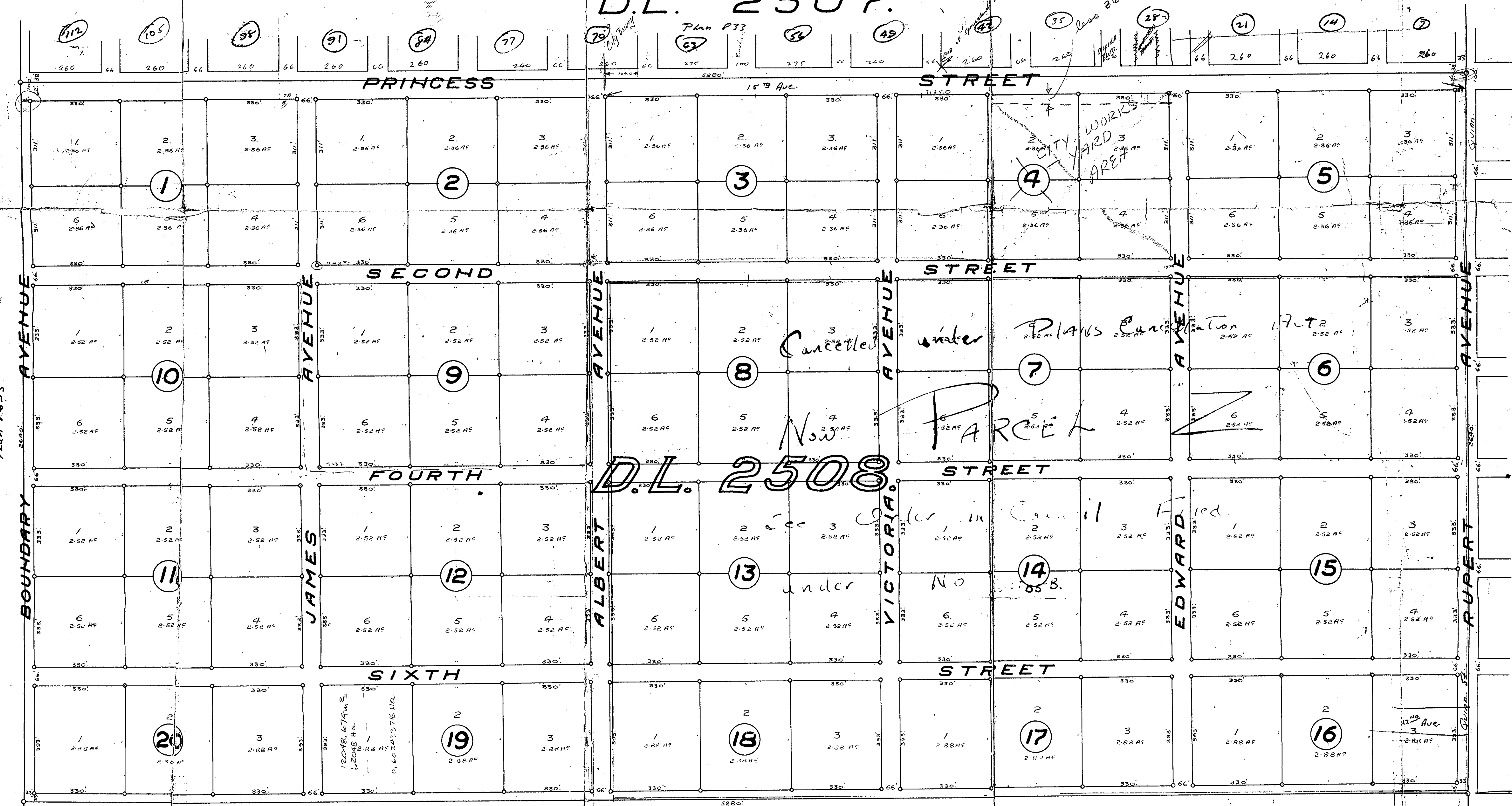
I, J.F. TEMPLETON, a B.C. LAND SURVEYOR CERTIFY THAT THIS PLAN IS A CORRECT REPRESENTATION OF THE SURVEY WHICH HAS BEEN MADE BY ME UPON THE GROUND AND IS PREPARED UNDER THE PROVISIONS OF THE LAND REGISTRY ACT.  
FORT GEORGE B.C.  
OCT. 29<sup>th</sup> 1910.  
J.F. Templeton, S.L.S.

SCALE: 200 FT. = 1 INCH.

Jessie Douglas  
By her atty, in fact  
George Agor

D.L. 2507.

D.L. 2607



D.L. 2508

D.L. 936.

DL 2611

For Parcel 7 See  
Plan # 6087.

817

DL 960.