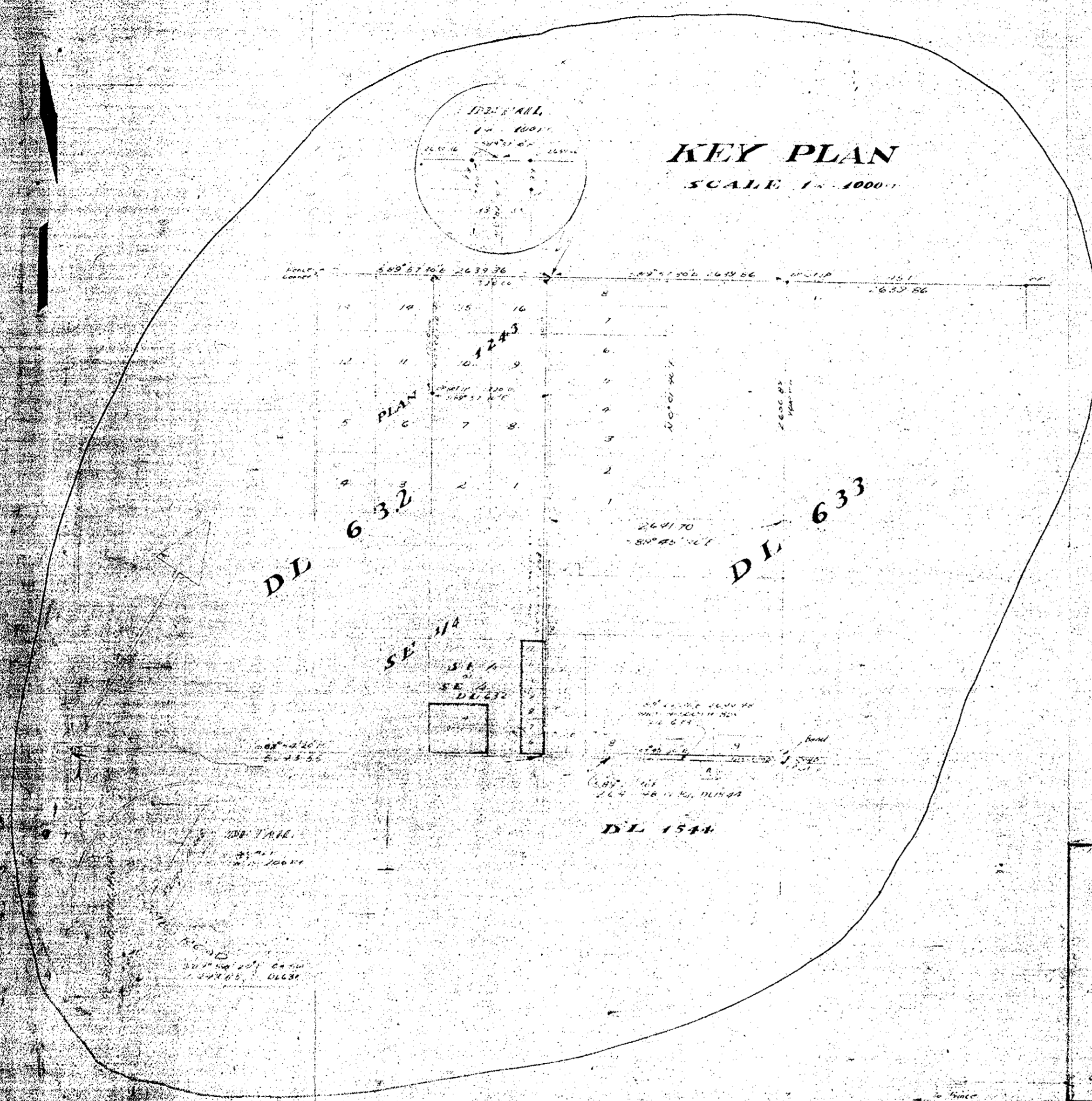


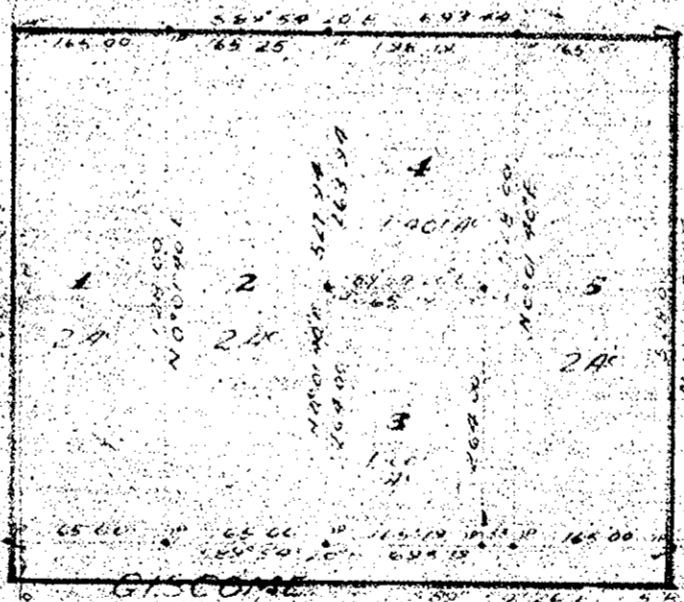
PLAN 3
J.W. H. [unclear]

**PLAN OF SUBDIVISION
OF
PART OF SOUTH EAST QUARTER
OF SOUTH EAST QUARTER DISTRICT LOT 632
CARIBOO DISTRICT
SCALE: 1" = 200'**



LEGEND:
Bearings are Astronomic and are derived from the North boundary of the NE 1/4 of District Lot 633
Old wooden Posts found shown thus OP
Old wooden Posts replaced by Iron Posts shown thus OP
Old Iron Posts found shown thus IP
Iron Posts Set shown thus IP

**SE 1/4 of
SE 1/4
DL 632**



12	0.966 AC
11	0.966 AC
10	0.966 AC
9	0.966 AC
8	0.966 AC
7	0.966 AC
6	0.966 AC

DL 633

Approved under the Land Registry Act
on the 1st day of APRIL 1957.
A.J. Powering
Applying Officer, Department of Highways,
Victoria, B.C.

REAPPROVED
A.J. Powering
APPROVING OFFICER
DEPT. OF HIGHWAYS
AUGUST 12th 1957

Harry [unclear] Clerk
David [unclear] Witness

I, *W. H. [unclear]*, Mayor of the City of Kamloops, British Columbia
and Surveyor make oath and say that I was present at and
did personally superintend the survey represented by this
plan and that the survey and plan are correct.
The said survey was completed on the 24th day of November 1956.
Sworn before me at Kamloops this 1st day of February 1957.
Commissioner for Taking Affidavits within British Columbia

1480/1169116/1163322