

PLOTTED (KS)
Plan No. 8156
Deposited in the Land Registry Office
of Kamloops on the 21st day of June 1957
Registrar

PLAN OF SUBDIVISION

Of part of N.W. 1/4 District Lot 818
Cariboo District

Scale: 1" = 200'

Legend

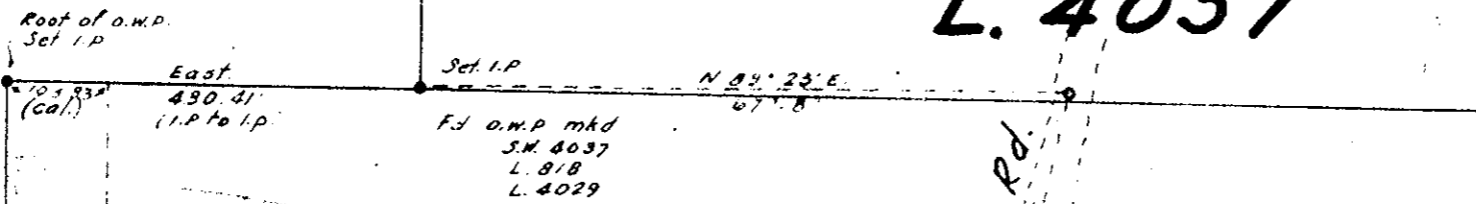
Bearings are astronomic and are derived from
part of North boundary of District Lot 818 as East

Old wooden posts found. New iron posts set shown
New iron posts set shown
Distances calculated shown
WT. stands for witness

• O.W.P. set I.P.
• I.P.
(cal.)

L. 4029

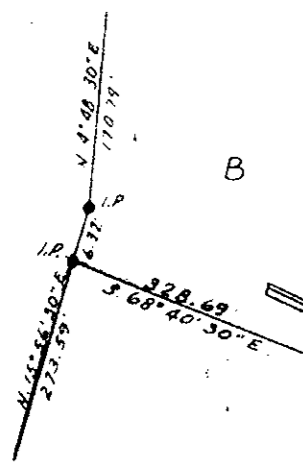
L. 4037



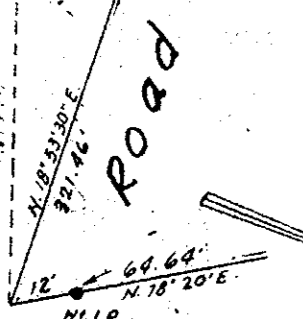
Note
Trar follows & travelled Road

N.W. 1/4
D.L. 818

Detail
No Scale



Detail
No Scale



I A.W.M. William of the City of Kamloops British Columbia Land Surveyor
make oath and say I was present at and did personally superintend the
survey represented by this plan and that the survey and plan are correct.
The said survey was completed on the 21st day of November 1956.

A.W.M. William B.C.L.S.

Sworn before me at Kamloops on
the 17 day of September 1957.

A Commissioner for taking
affidavits within British Columbia

Approved under the Land Registry Act
on the 17 day of September 1957.

Approving Officer
Dept. of Highways, Victoria

Owner: THE DIRECTOR, THE BRITISH LAND CO.
Witness: J.A. Thomas

MS William - Whyte - Serle
B.C. Land Surveyors, Kamloops
F.B. 64 P-9-15 File 56-2

Folder 57-122

1480/1164/55