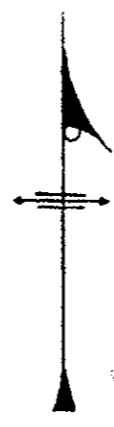


8010

Plan No. 8010
Deposited in the Land Registry
Office at Prince George B.C.
10th of March 1957.

J.V. in Carter
Registrar

Approved by
J. Powering
Approving Officer
Dept. of Highways



L.8177

L.8178

L.817

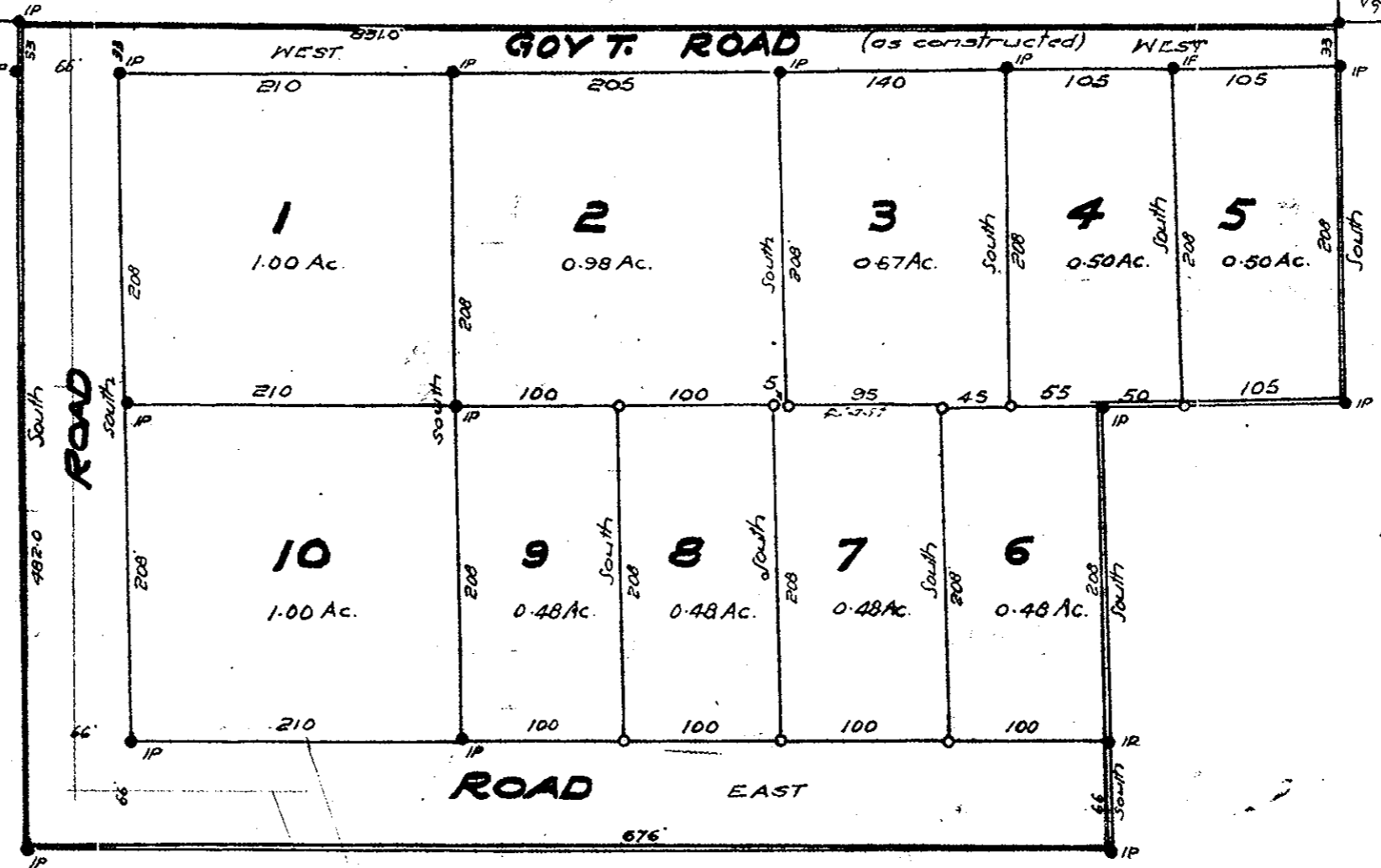
L.9265

L.9264

old post mk.
NW. 1/4 1433 SW. 1/4 917
Set IP

491.6 West

N. 1/4 1433
L. 1433



1382.6

West

or destroyed
by road.
Set IP of correct
bearing & distance
from NW 1/4 1433 &
SW 1/4 917 as shown in
field notes Dept. of Lands
Sept. 1924

**PLAN OF SUBDIVISION
OF PART OF LOT 1433
CARIBOO DIST.**

Scale: 100ft - 1 in.

LOT 1433

Bearings are astronomic
derived from North & East
boundaries of Lot 1433 as
shown in field notes in Dept.
of Lands dated Sept. 1924

Old iron post shown ● OIP
Iron post set shown ○ IP
White painted wood posts ○

E. Godwin
OWNER

A. S. Brecken
WITNESS

Inspected 10 Mar. 1956
J. F. Campbell
B.C.L.S.

I, J. A. F. Campbell of city of Prince George
a British Columbia land surveyor make oath
and say that I was present at and did
personally supervise the survey represented
by this plan and that the survey and plan are
correct. The said survey was completed on
the 10th of Dec 1955
Sworn before me
this 5th day of Mar. 1956
J. F. Campbell

A. S. Brecken
A Notary Public in & for Prov. of B.C.