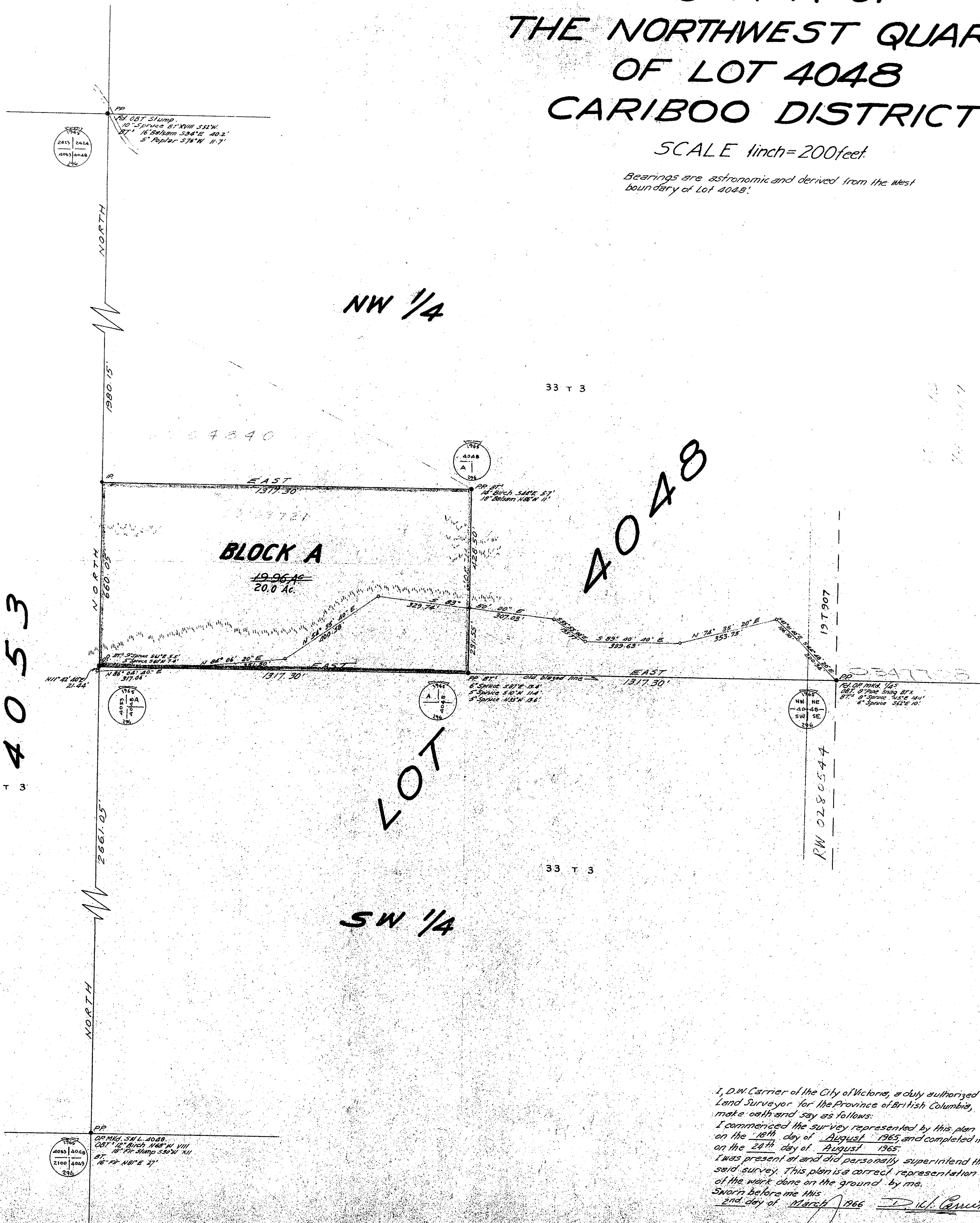


OFFICIAL PLAN

PLotted PLAN 792
**SURVEY PLAN OF
BLOCK A OF
THE NORTHWEST QUARTER
OF LOT 4048
CARIBOO DISTRICT**

SCALE 1inch=200feet.

Bearings are astronomic and derived from the west boundary of Lot 4048.



I, D.W. Carrier of the City of Victoria, a duly authorized Land Surveyor for the Province of British Columbia, make oath and say as follows:
I commenced the survey represented by this plan on the 18th day of August 1965, and completed it on the 24th day of August 1965.
I was present at and did personally superintend the said survey. This plan is a correct representation of the work done on the ground by me.
Sworn before me this
2nd day of March 1966 D.W. Carrier

D. Carrier
A Commissioner for Taking Affidavits within British Columbia.

LAND SURVEY DIVISION
e
ses