

PLOTTED (HL)

Plan No B7767

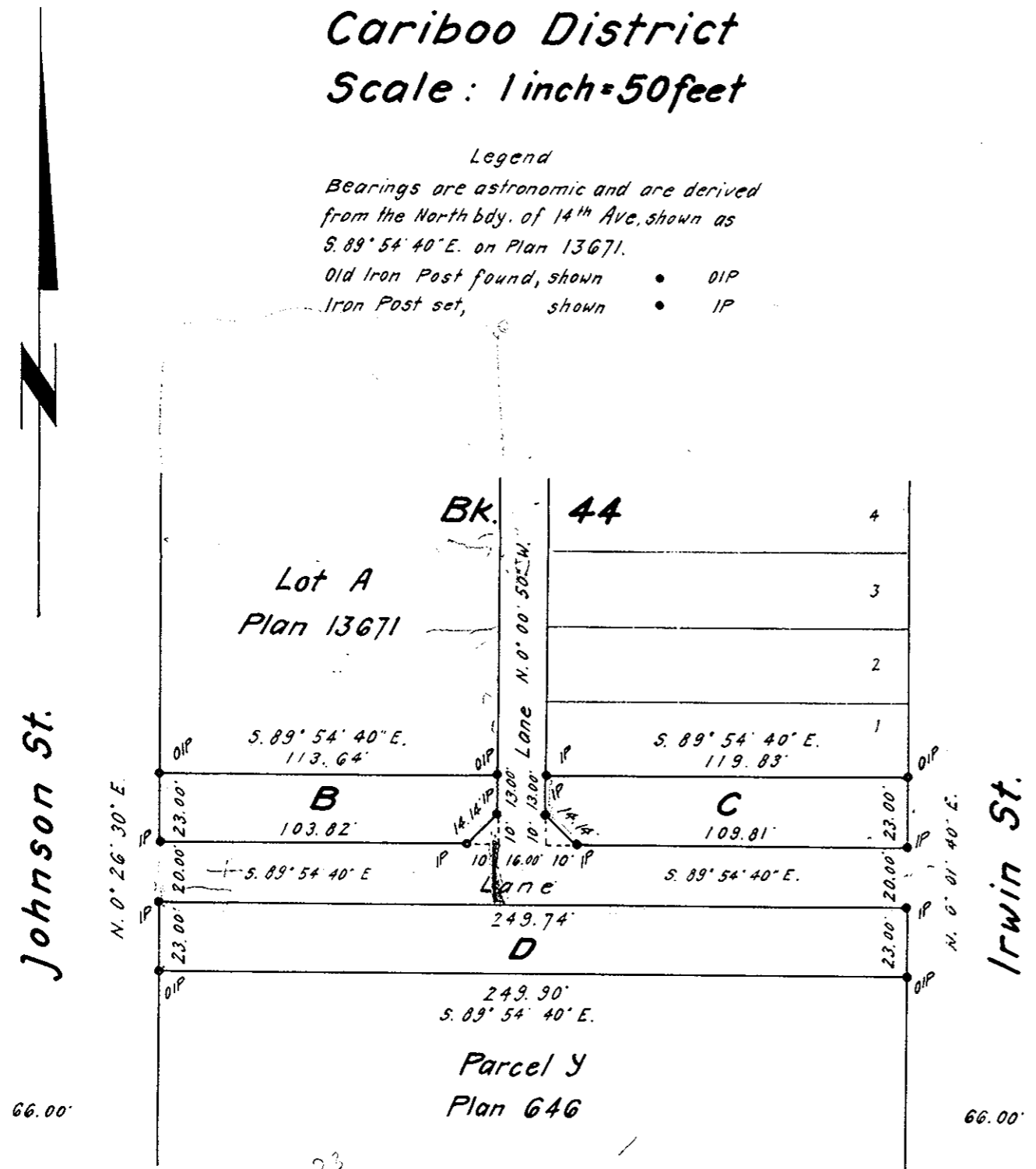
Explanatory Plan to Accompany By-Law No 1584  
 City of Prince George, B.C., Closing Part of 14<sup>th</sup> Avenue  
 Plan 646, District Lot 1429  
 Cariboo District  
 Scale: 1 inch = 50 feet

Deposited in the Land Registry Office at Kamloops, B.C.  
 this 7 day of FEB 1964.

*[Signature]*  
 Registrar

Legend

Bearings are astronomic and are derived  
 from the North bdy. of 14<sup>th</sup> Ave. shown as  
 S. 89° 54' 40" E. on Plan 13671.  
 Old Iron Post found, shown • OIP  
 Iron Post set, shown • IP



Certified Correct  
 this 27<sup>th</sup> day of November 1963.

*[Signature]*  
 F. J. Goble, B.C.L.S.

McWilliam, Whyte, Serle & Goble  
 British Columbia Land Surveyors

checked	F	S	D	X	Ref. No 63100-C-2
---------	---	---	---	---	-------------------